

# *Critical Incident Management*

Thomas R. Mynsberge,  
School Safety Specialist

CRITICAL INCIDENT  

---

MANAGEMENT

*Critical Incident  
Management  
Program*

# *Thomas Mynsberge*

Retired, Specialist Sergeant Michigan State Police

20 Years State Police Emergency Support Team

15 Years President of Critical Incident Management, Inc.

Targeted Violence in Schools, United States Secret Service

Incident Response to Terrorist Bombings, New Mexico Tech

Patrol Response to Active Shooters, Instructor

Certification, National Tactical Officer's Association

CERT and Teen CERT Instructor, Eastern Michigan Univ.

ICS/NIMS Certified Instructor, DHS

CRITICAL INCIDENT  

---

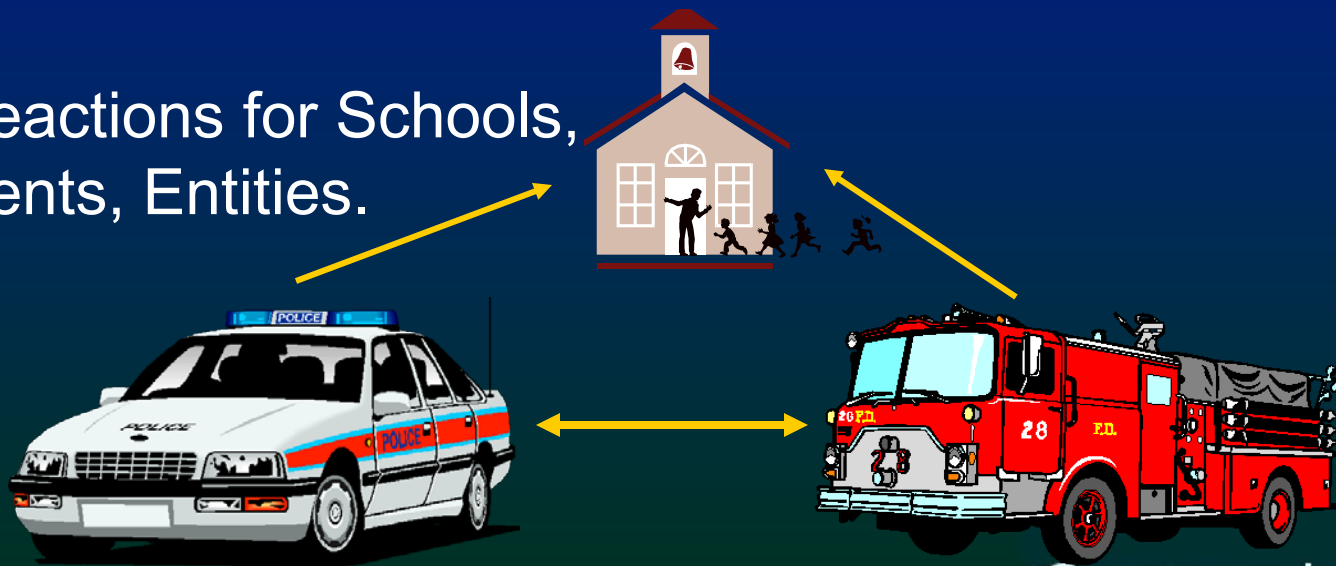
MANAGEMENT

# Critical Incident Management Program

Initiated in Saginaw County in 2001 with support of Superintendents, School Boards, and Police Chiefs.

Formed a consortium and created a unified response for all Saginaw County schools. First County and Regional Response Program in Michigan.

Uniform reactions for Schools, Governments, Entities.



CRITICAL INCIDENT  
MANAGEMENT

# Critical Incident Management Program



All police officers trained in quad response.

Fire departments trained in support for violent incidents.



CRITICAL INCIDENT  

---

MANAGEMENT

# Entities Trained

- Currently Contracted to Provide Training for all Saginaw, Midland, Shiawassee, and Lapeer County Schools.
- Region 7 Homeland Security Government, Schools, Police/Fire Response Training and Coordination.
- Region 3 Active Shooter Police/Fire Response Scenarios and Training.
- Government Response Seminars for Townships Association, County Treasurers, Registers of Deeds, Clerks are Scheduled.



The University of Michigan-Flint is sponsoring our popular Critical Incident Management series, offering 1.5 SB-CEUs or participants may opt to earn **one graduate credit** (additional fees and time required).

CRITICAL INCIDENT  

---

MANAGEMENT





Whydowedothis??????????



CRITICAL INCIDENT  

---

MANAGEMENT

# Critical Incident Management Programs

- Staff Training
- Administration Training
- Bomb Threat Reaction
- Incident Command Training
- Table Top Exercises
- Large Event Security
- Building Vulnerability Assessments
- Amish School Shooting
- Police Rapid Response Training
- Fire Response Training
- Functional Needs Populations
- Transportation Safety
- Tactical On Scene Command
- Place of Worship Security



CRITICAL INCIDENT  
MANAGEMENT

# Critical Incident Management Curriculum

## Staff Training from *Memory*

- Violence Reaction
- Secure Mode
- Bomb Threat Reaction
- Shelter-in-Place
- Hostage Survival

# What would you do?



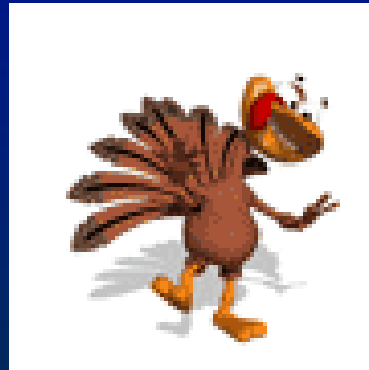
CRITICAL INCIDENT  

---

MANAGEMENT

# Options

Run



Hide



Freeze

# Live by the "SEA"

Seek Secured Shelter

Escape if Room Compromised

Attack with Vengeance if no other  
Option

# Secure Mode for External Threats



When the potential for external threat arises, such as an off campus critical incident, our staff are trained for immediate response to secure our students and visitors. *This fulfills the requirement for the new state law.*

## School Incidents 2005-2006

» 09-11-2006	Saginaw City	Shooting outside Weber Middle School
» 09-13-2006	Dawson College	Montreal, Canada, Mass Shooting
» 09-14-2006	Green Bay, WI	East High School attack plot foiled
» 09-16-2006	Duquesne, PA	College Campus shooting of players
» 09-19-2006	St Clair HS	Bomb Threat, suspect confessed
» 09-27-2006	Bailey, CO	Platte Canyon HS Hostage killing
» 09-29-2006	Cazenovia, WI	Weston School Principal killed
» 09-29-2006	Cadillac, MI	Lockdown for possible gun
» 10-02-2006	N Las Vegas, NV	Lockdown, reported gun in school
» 10-02-2006	Nickel Mines, PA	Amish School shooting, 10 girls shot, 5 fatal
» 10-05-2006	Jacksonville, IL	Bomb bought in High School in backpack
» 10-05-2006	Pikeville, MD	Pellet gun at High School Shoots 6 boys
» 10-05-2006	Jonesboro, AK	Molotov cocktail bought in MS by student
» 10-05-2006	Nebraska	3 counties lockdown due to phoned threat
» 10-06-2006	Bangor HS	Bomb Threat, lockdown
» 10-09-2006	Genesee County	Clio, Swartz Creek Bomb Threats
» 10-09-2006	Antrim County	Mancelona HS dispute with rifle in car
» 10-10-2006	Bay City Central	Lockdown due to potential gun in neighborhood
» 10-11-2006	Ishpeming HS	Plot unraveled to kill teacher and 9 students
» 10-20-2006	Western HS	Lockdown, evacuation due to threats
» 10-26-2006	Kearsley HS	Lockdown due to letter threats
» 10-26-2006	W. Kendall, Fl	Shooting in front of Elementary School
» 10-27-2006	Essexville Schools	Two schools close due to potential violence
» 11-13-2006	Saginaw, MI	Covenant lockdown due to Armed Robber
» 11-15-2006	Berlin, Germany	Masked gunman shoots 8 in High School
» 11-18-2006	Milford, VA	Maintenance boss killed by employee at MS
» 11-19-2006	Aurora, IL	Hostage taker killed in Hospital standoff
» 12-11-2006	Kearsley HS	Bomb Threat
» 12-15-2006	Westdale El	Lockdown due to threats
» 12-18-2006	Heritage HS	Lockdown due to threats
» 12-25-2007	Lansing, MI	Asst Principal kills self and 2 others, domestic
» 01-03-2007	Tacoma, WA	Student shot to death by student, Foss HS
» 01-04-2007	Merrill HS	Bomb Threat on bathroom mirror, Arrest
» 01-05-2007	Kearsley HS	Bomb Threat on Computer Monitor, Arrest
» 01-09-2007	Las Vegas, NV	Two Shot at Western HS parking lot
» 01-19-2007	Framingham, MA	Student stabbed to death by student in HS
» 01-19-2007	Pinconning, MI	Schools lockdown due to fleeing man with gun
» 01-31-2007	Kearsley HS	Bomb Threat in bathroom Lockdown, arrest
» 02-01-2007	Gladwin HS	School Lockdown student with gun in HS
» 02-27-2007	Capac Schools	Man with a gun in town, schools in lockdown
» 03-07-2007	Midland Dow	Fatal double shooting in parking lot
» 03-09-2007	St. Charles HS	Student on student threat, lockdown
» 03-14-2007	Chesaning HS	Bomb Threat in bathroom, lockdown
» 03-15-2007	Chesaning MS	Bomb Threat in bathroom, lockdown
» 03-16-2007	Knoxville TN	Student fatally shot in teacher love triangle
» 03-21-2007	Bridgeport Schools	Lockdown due to Armed Robbery



# Bomb Threat Reactions

What do bombs look like????????????



# Lowell High School 5/1/96



Post Blast Damage - 2" Steel Pipe Bomb

CRITICAL INCIDENT  

---

MANAGEMENT

# Shelter-In-Place

Implement to Avoid Hazardous Inhalants  
And  
Evacuation would be Hazardous

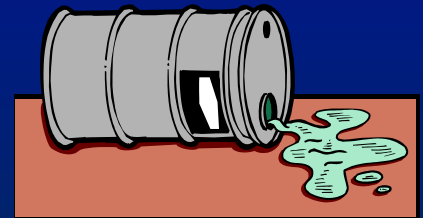
Pick Central Above Ground Area

Turn Off Air Circulators Immediately

Seal Windows and Doors

*“Secure Mode”* – DO NOT open outside doors (allows  
contaminates to enter)

Practice with Tornado Drills



# Administrative Training

- Train Administrators to work within the Incident Command System (ICS)
- Provide unified support information for responders to enhance response to students and staff
- Provide support services to ensure students and staff receive timely interventions
- Provide ICS-100 for schools certification

# Additional Programs

- Table Top Exercises
- Media Liaison Formation
- Functional Needs
- Alternative Care Sites (MEMS)
- Sporting/Large Event Security
- Enhanced Role with Intermediate School Districts
- CERT Training

# Functional Needs

- Autism Recognition
- Hearing Impaired
- Vision Deficits
- Limited Mobility
- Special Circumstances



# Large Scale Event Security

## *Types of Events*

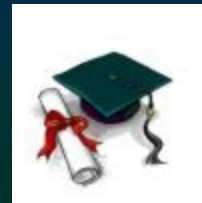
Sporting Events:  
Indoor/Outdoor



Plays



Graduations



Assemblies

# Enhanced Role with Intermediate School District

- Provide additional recovery resources for schools and communities involved in large scale incidents
- Work with transportation for district-wide assistance
- Enhance mutual aid among schools for seamless interactions
- Develop Emergency Management Resources for schools



# School CERT Training

Consider CERT Training:

Community Emergency Response Training

- Fire Safety
- Disaster Medical Operations
- Light Search and Rescue
- Disaster Preparedness
- CERT Organization
- Disaster Psychology
- Terrorism

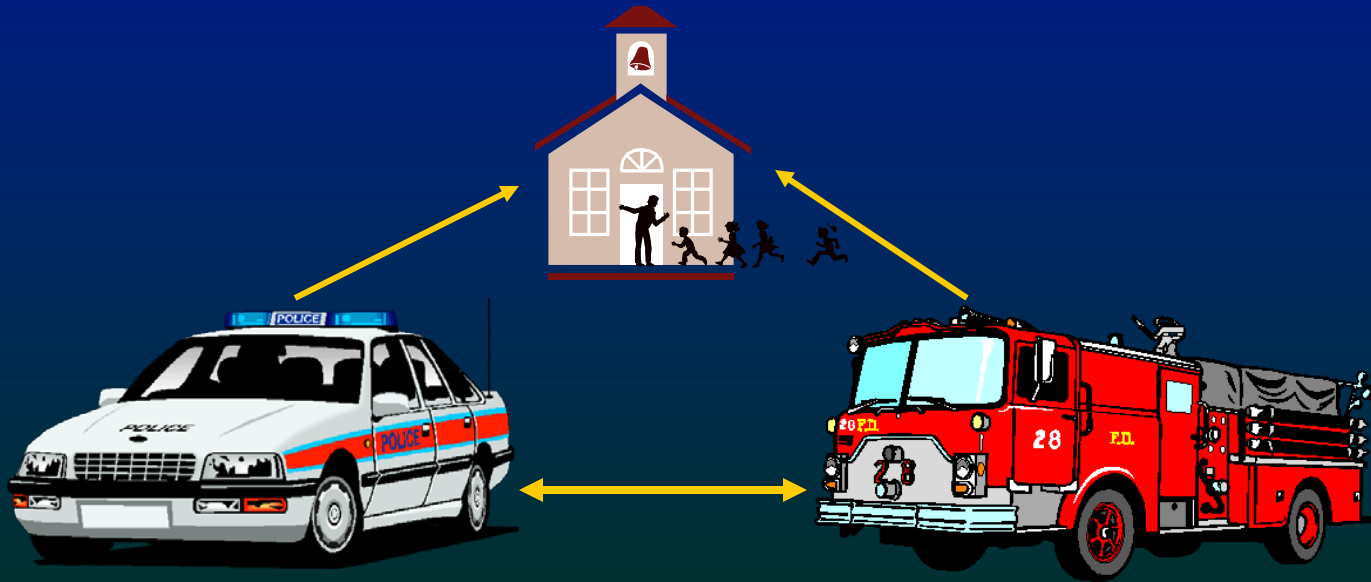


CRITICAL INCIDENT  

---

MANAGEMENT

“You Don’t Rise to the Occasion,  
You Sink to the Level of Your Training”



CRITICAL INCIDENT  

---

MANAGEMENT

# Our Goal: Provide a Safe and Secure School Environment



*Leadership is action,  
not position*

*-Anonymous*

Thomas R. Mynsberge

Office: 989.686.1714

Mobile: 989.239.5322

Email: [cim01.inc@gmail.com](mailto:cim01.inc@gmail.com)

[www.criticalincidentman.com](http://www.criticalincidentman.com)

2.24.2016

CRITICAL INCIDENT  

---

MANAGEMENT