



Your County and United Way

MAC
MICHIGAN ASSOCIATION OF COUNTIES



Michigan Association of
United Ways

Michigan Association of United Ways

Our work through 39 local United Ways

- Convene, advocate, and innovate in local communities statewide to highlight the issues faced by ALICE households
- Understand disparities and target equity
- Use ALICE to frame the conversation and work with Corporate Partners and local and state policy makers
- Collectively clear barriers and support systemic solutions that promote financial stability for ALICE



Michigan Association of
United Ways



Session Agenda

- ALICE Report Highlights
- Tour online ALICE Data Center
- Action for ALICE Discussion



2021 MICHIGAN REPORT



Michigan Association of
United Ways

Thanks

Michigan Research Advisory Committee

Brian Pittelko, M.P.A. - W.E. Upjohn Institute for Employment Research

David Clifford, Ph.D. - Eastern Michigan University

Kurt Metzger, M.A. - Data Driven Detroit

Luke Shaefer, Ph.D. - University of Michigan

Matias (Matt) McCauley – Networks Northwest

Neil Carlson, Ph.D. - Calvin University

Peter Ruark, MSW – Michigan League for Public Policy

Rene Perez Rosenbaum, Ph.D.- Michigan State University

Sponsor



Who is ALICE?

- **A**sset **L**imited, **I**ncome **C**onstrained, **E**mployed
- Above FPL, below Household Survival Budget
- Low-wage jobs – cashiers, health care workers, security guards, laborers, office administration
- No savings:
 - For emergencies
 - For investing in the future – education, homeownership, retirement

Key Terms

Household Survival Budget: The bare-minimum costs of basic necessities (housing, child care, food, transportation, health care, and a smartphone plan).

ALICE Threshold: The average income needed to afford the Household Survival Budget. Households below the ALICE Threshold include both ALICE and poverty-level households.

ALICE: Households with income above the Federal Poverty Level but below the basic cost of living.

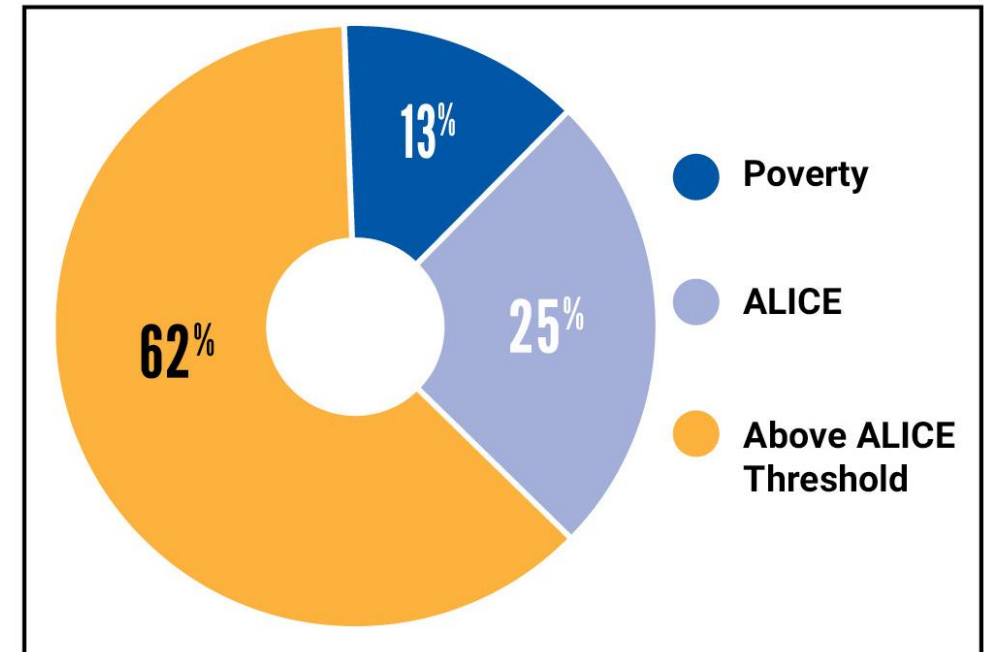
Poverty: Households earning below the Federal Poverty Level

Total Households: The number of households as reported by the American Community Survey.

ALICE in Michigan

- **A**sset **L**imited, **I**ncome **C**onstrained, **E**mployed
- Above FPL, below Household Survival Budget
- Low-wage jobs – cashiers, health care workers, security guards, laborers, office administration
- No savings:
 - For emergencies
 - For investing in the future – education, homeownership, retirement

Households by Income, Michigan, 2019

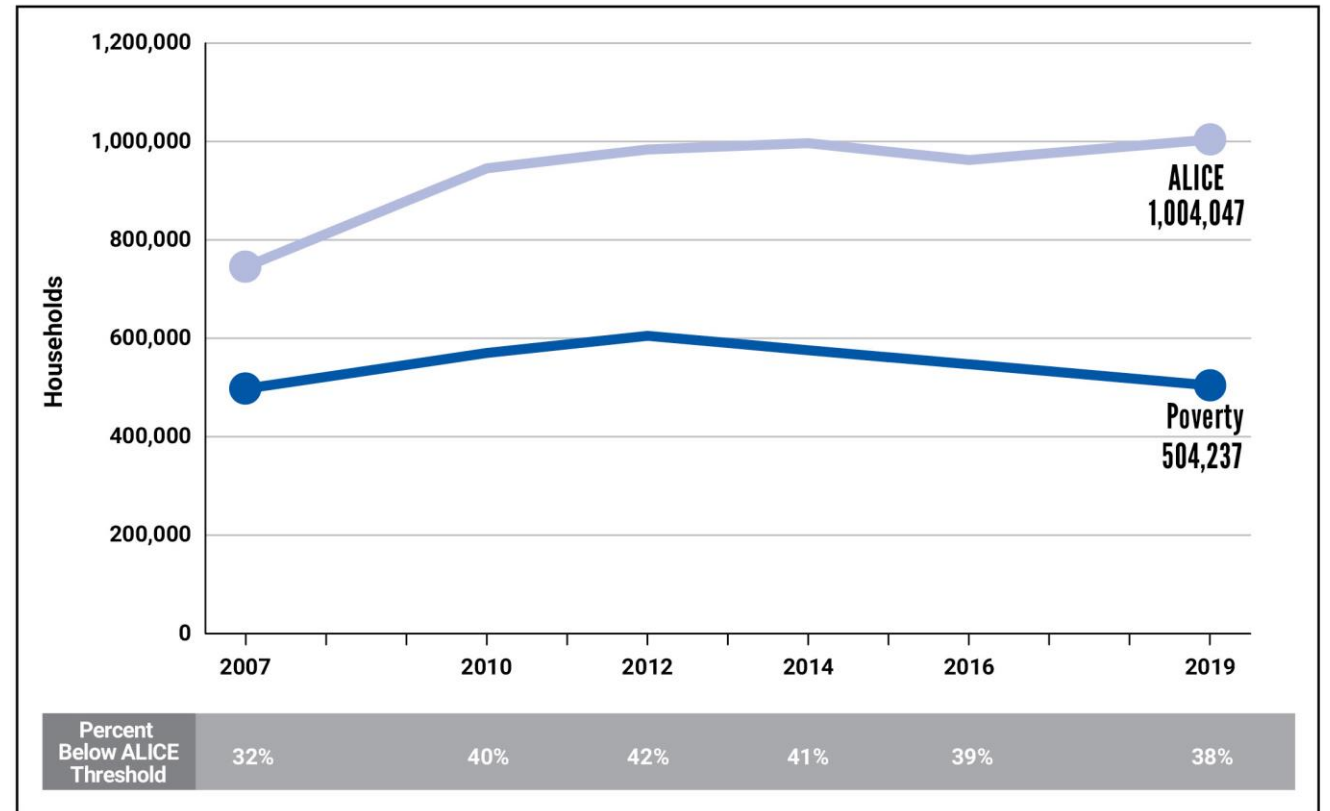


Sources: ALICE Threshold, 2019; American Community Survey, 2019

ALICE over time in Michigan

- **ALICE and Poverty-Level Households**
 - Poverty 13% (504,237)
 - ALICE increase from 745,446 in 2007 to 1,004,047 in 2019 (35% increase)
 - 10% of households on the cusp of ALICE Threshold in 2019
- Large number of households struggling before the pandemic helps explain why impact is so severe

Households by Income, Michigan, 2007-2019



Sources: ALICE Threshold, 2007-2019; American Community Survey, 2007-2019

ALICE Demographics

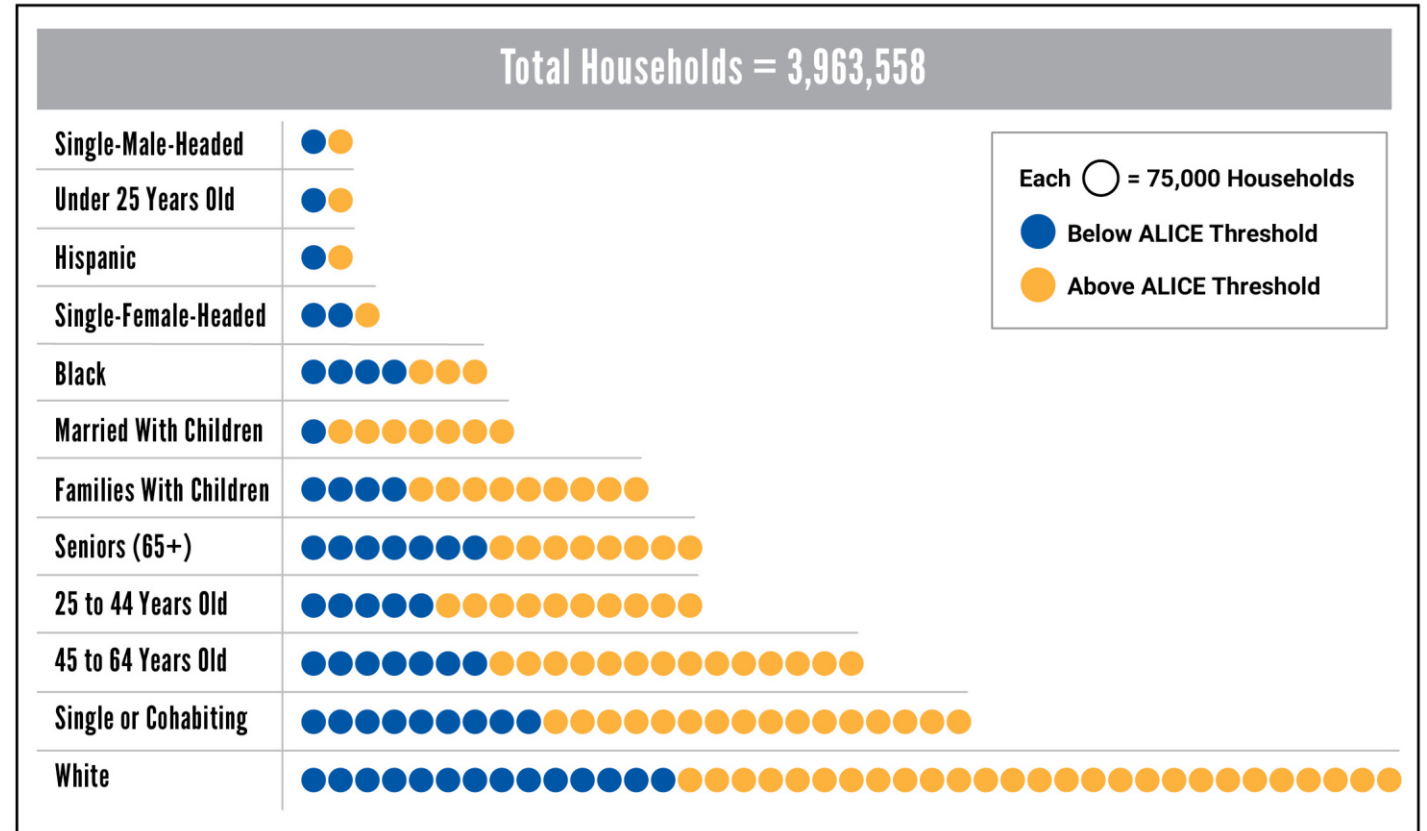
Seniors: 1.1mil households
(47% Below ALICE Threshold)

Families with children 1mil (32%)

- Married 654,496 (15%)
- Single-female 240,969 (73%)
- Single-male 94,431 (50%)

Single and cohabit: 1.9mil
(36% Below ALICE Threshold)

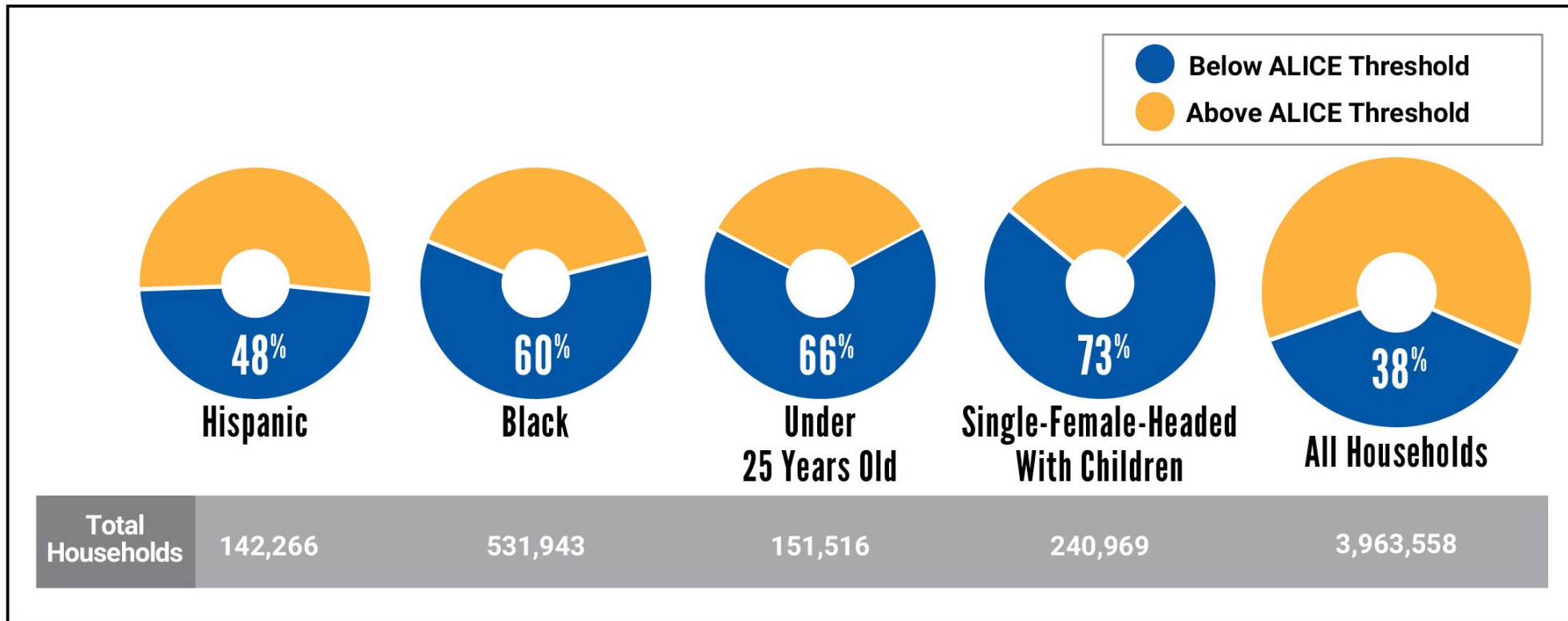
Household Types by Income, Largest Groups, Michigan, 2019



Sources: ALICE Threshold, 2019; American Community Survey, 2019

Some Groups More Likely to be ALICE

Select Household Groups by Income, Michigan, 2019



Sources: ALICE Threshold, 2019; American Community Survey, 2019

How does MI compare?

ALICE lives in every state

Rankings: (Percent of households below the ALICE Threshold):

#1 Louisiana (51%)

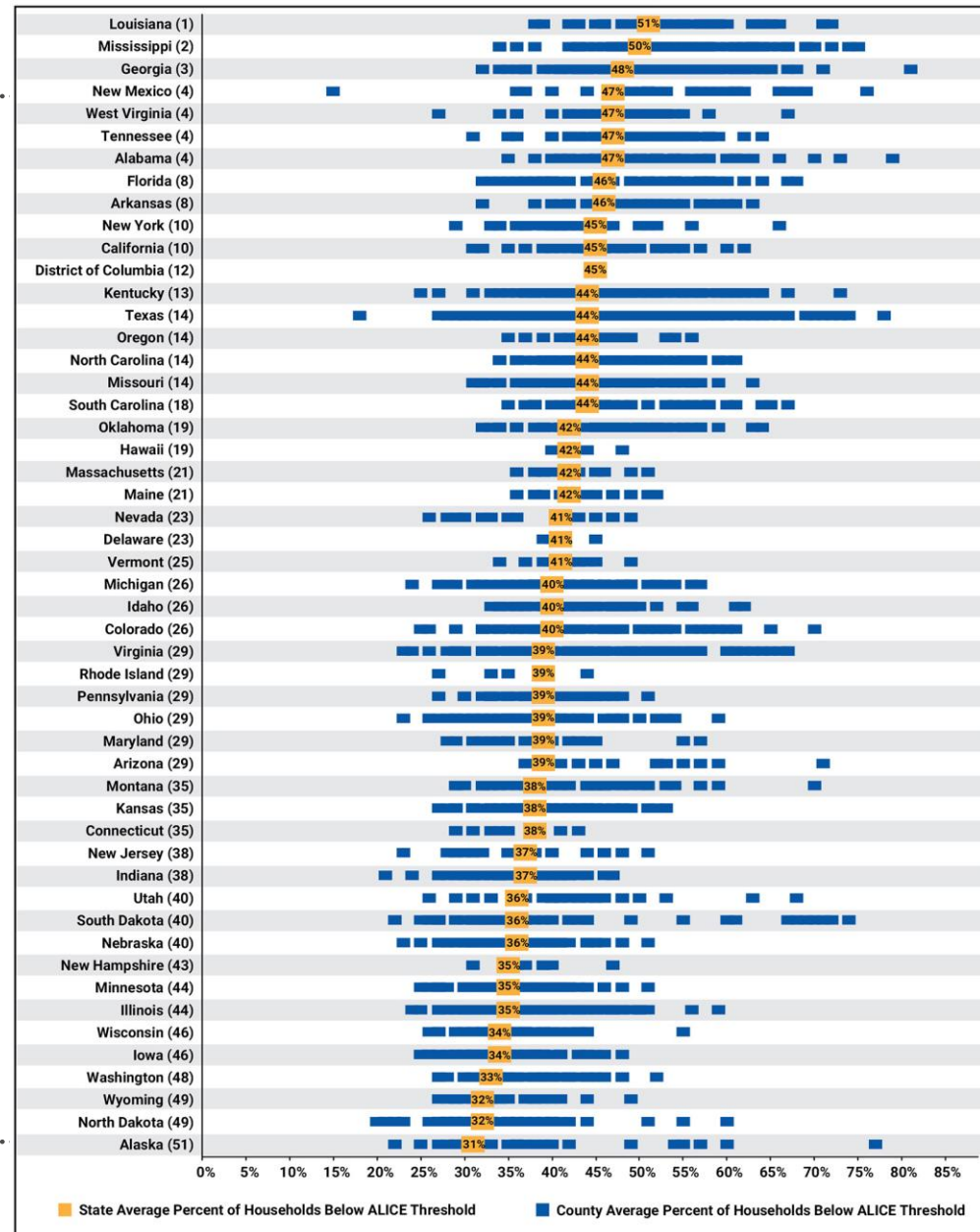
#26 Michigan (38%)

#29 Ohio (39%)

#44 Illinois (35%)

#51 Alaska (31%)

Percent of Households Below the ALICE Threshold and Ranking by State, United States, 2018



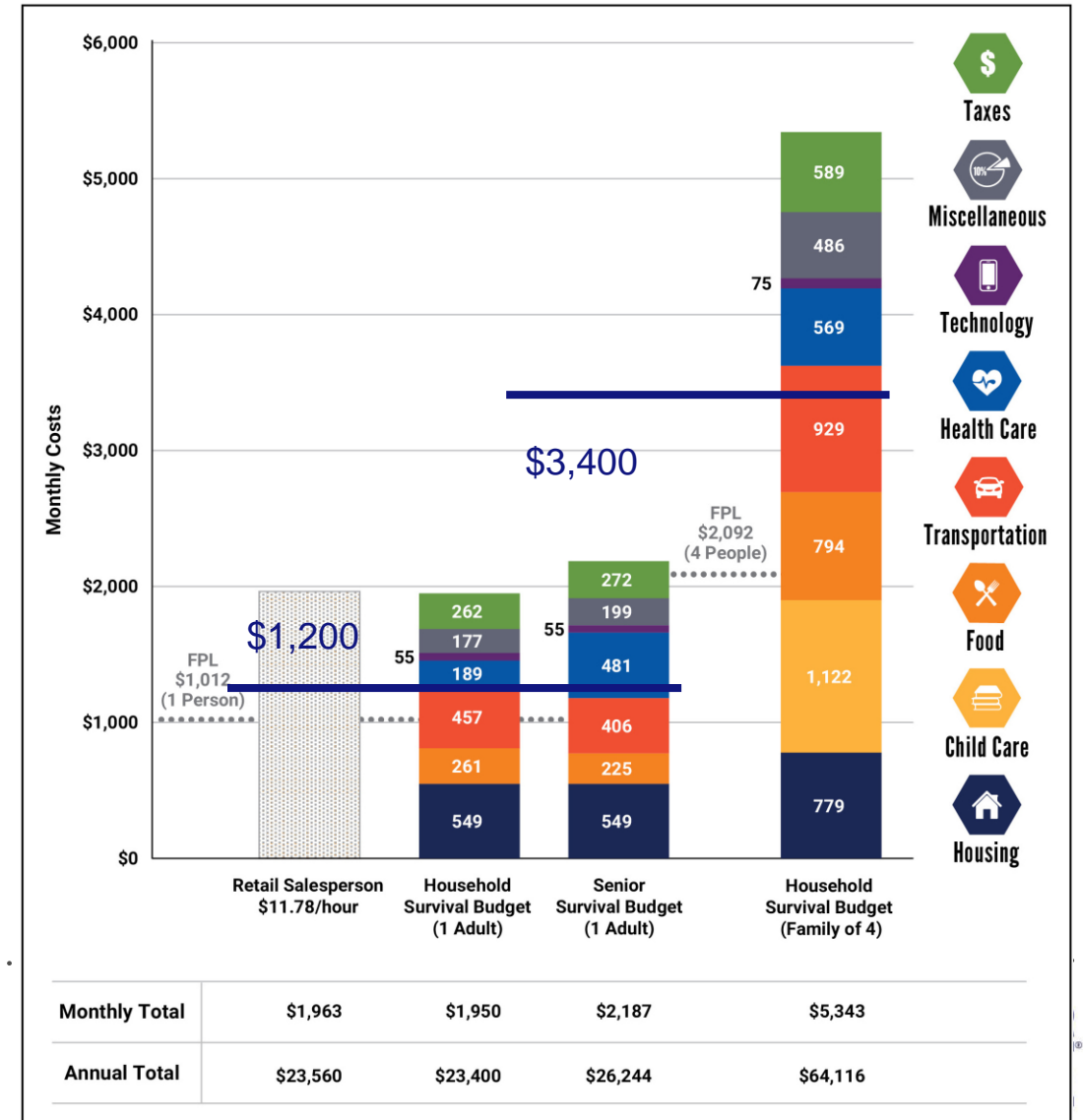
Sources: ALICE Threshold, 2018; American Community Survey, 2018



The Bare Minimum Budget

- ALICE cost of living far above the Federal Poverty Level (FPL)
- ALICE cost of living outpaces wages
 - Retail Salespersons, most common occupation in 2019, paid \$11.78/hour
- Federal CARES Act stimulus check

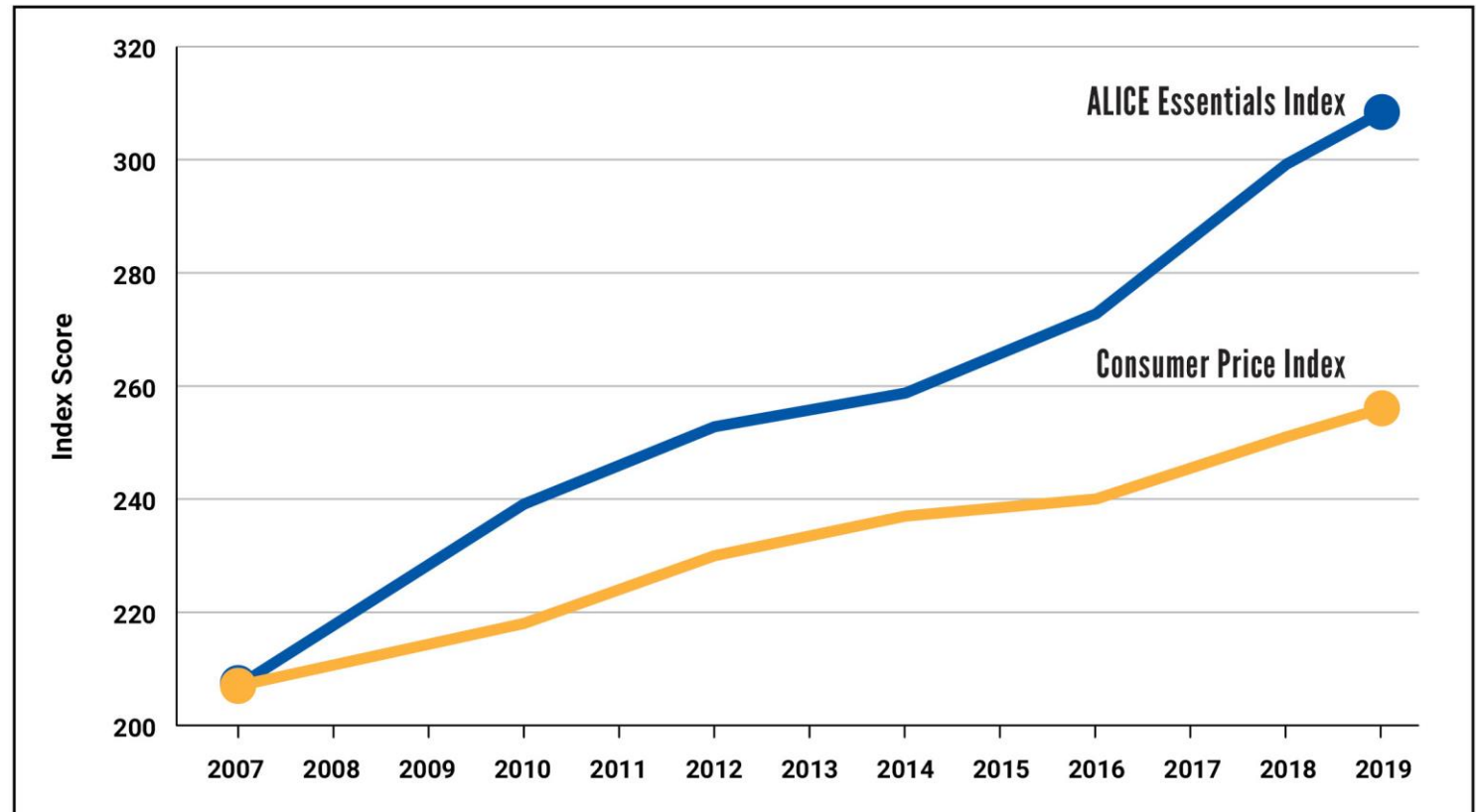
Budget Comparison, Michigan, 2019



Costs of basic goods increasing faster

Inflation Indices, United States, 2007-2019

- **The ALICE Essentials Index**
 - Basic household items ALICE families buy
 - 3.4% annual increase
 - Similar rate of increase in rural and urban areas
- BLS Consumer Price Index (CPI)
 - All goods and services all families purchase
 - 1.8% annual increase



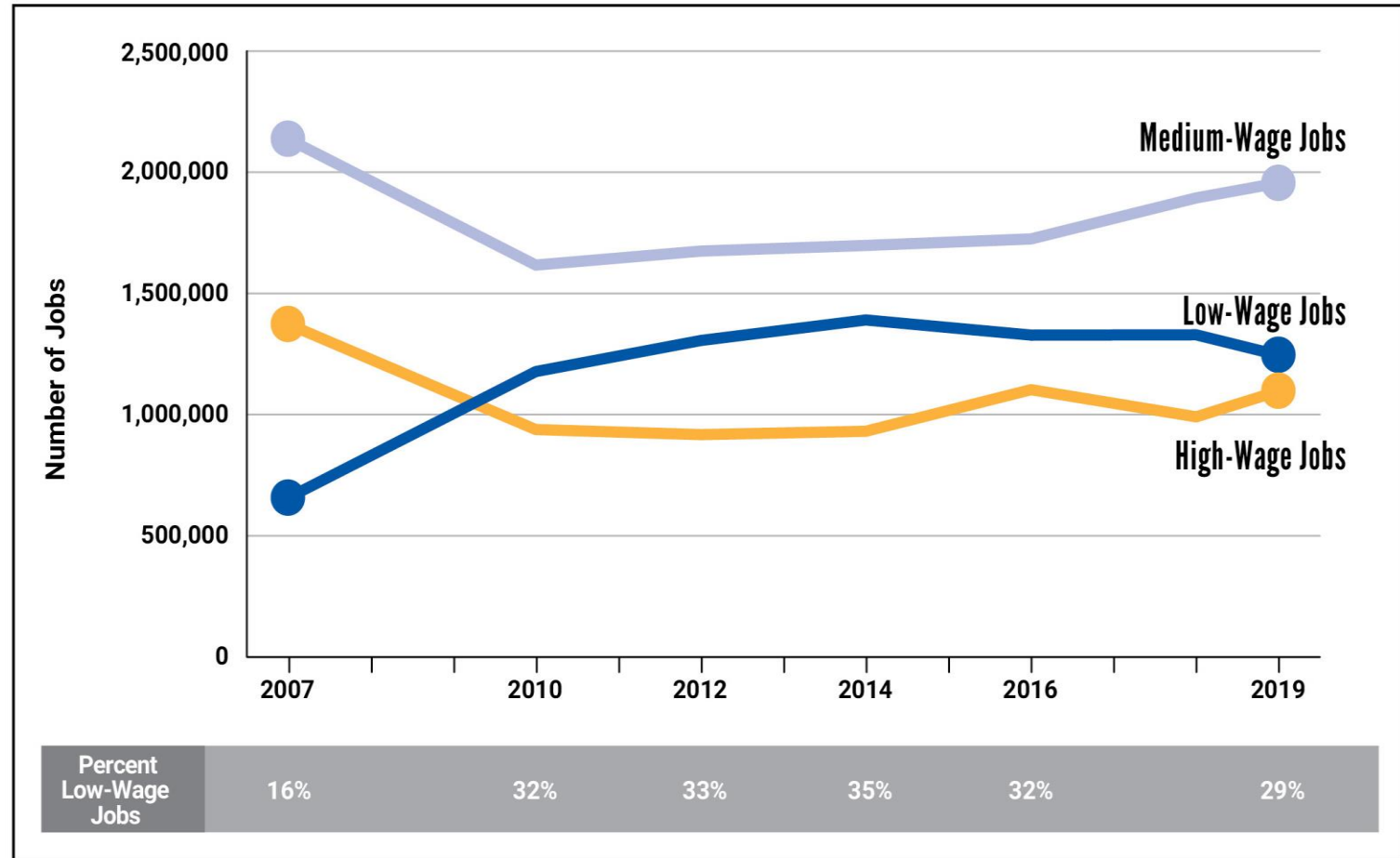
Sources: ALICE Essentials Index, 2007-2019; Bureau of Labor Statistics—Consumer Price Index, 2007-2019. For more information, visit [UnitedForALICE.org/Essentials-Index](https://www.unitedforalice.org/essentials-index).

Low and medium wage jobs dominate

Wages versus Household Survival Budget (HHSB)

- **Dark blue** = Job cannot support family HHSB with two earners
- **Light blue** = Job supports family HHSB with two earners
- **Gold** = Job supports family HHSB with one earner
- COVID-19 projections

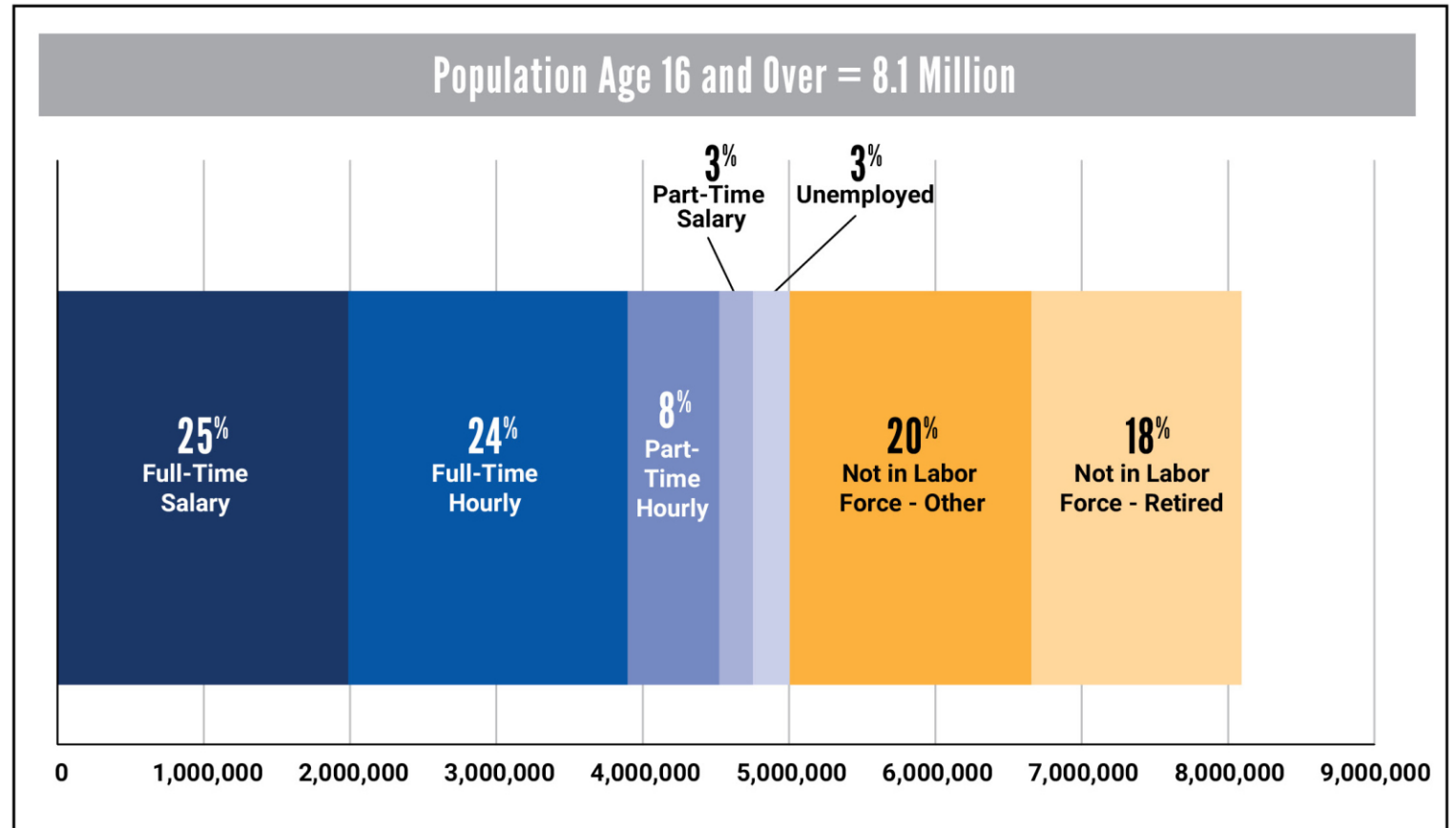
Number of Jobs by Wage Level, Michigan, 2007-2019



ALICE workers more at risk

Labor Status, Population Age 16 and Over, Michigan, 2019

- More than half of jobs were hourly paid in 2019
- Only 25% of working-age adults had the security of a full-time job with a salary
- Covid19 impact
 - Job cuts, reduced hours
 - Closed businesses
 - Reduced production of goods/services
- Inequalities exacerbated



Sources: American Community Survey, 2019; Federal Reserve Bank of St. Louis, 2019

Policy Priorities for ALICE



Earned Income Tax Credit – increase the state credit for today’s economy



Accessible Childcare – increase income eligibility for CDC and increase childcare provider payments



Accessible Housing – create and expand tools for the development or rehabilitation of housing supply that is attainable to more



2-1-1 - Provide coordinated connection to health and human services

Michigan 2-1-1



- Serves **your County's residents** through relationships with community partners supported by a network of **seven regional contact centers**
- Connects residents to **community resources** that are **accurate** and **up-to-date**
- Provides access **24/7/365** by phone, text, and web
- **Constantly innovates**, for example API (Application Programming Interface), and CIE (Community Information Exchange)



Emergency Food and Shelter National Board Program

AUTHORIZATION

- McKinney-Vento Homeless Assistance Act of 1987

PURPOSE

- Supplement and Expand On-going Efforts to Provide Shelter, Food, and Supportive Services

GOVERNANCE

- National Board

IMPLEMENTATION

- Local Boards in Funded Jurisdictions
- Competitive Grant Process





ELIGIBLE SERVICES AND EXPENDITURES

FOOD SERVICES

- Congregate Meals
- Food Purchases
- Home Delivery Meals

SHELTER SERVICES

- Mass Shelters (e.g., local shelter facilities)
- Hotel/Motel (up to 90 days per phase)
- Rent/Mortgage (up to 3 months or 90 days per phase)

SUPPLIES AND EQUIPMENT PURCHASES

- Cleaning Supplies For Shelters, Feeding Sites
- Small Equipment Purchases



UTILITY SERVICES FOR CLIENTS

- (gas, electric, water), up to 3 months or 90 days per phase

ADMINISTRATIVE ALLOWANCE

- 2% of Jurisdiction's Award
- Local Board Determines Use

UNITED FOR ALICE



www.UnitedforALICE.org

www.unitedway.org/find-your-united-way

Nancy Lindman, Director Public Policy & Partnerships Nancy.Lindman@uwmich.org

