

Materials Management Planning

Michigan Association of Counties
Annual Conference
October 2, 2023

PRESENTERS



Christina Miller

Materials Management Planning Specialist
EGLE



Jeff Krcmarik

Recycling Specialist
EGLE

WHAT: DEFINITIONS TO KNOW

- **MMP:** Materials Management Plan
- **Planning Area:** County/counties preparing an MMP together
- **CAA:** County Approval Agency
 - Primary Responsible party for the MMP
- **DPA:** Designated Planning Agency
 - Governmental unit or regional planning agency that is determined by the CAA
 - Administers & prepares the MMP through the direction of the MMPC
- **MMPC:** Materials Management Planning Committee
- **MSW:** Municipal Solid Waste “Residential Like” waste



WHAT: YOU NEED TO KNOW

- New law is now in effect
 - Sets overall goals to develop better materials management systems to manage our materials
- Requires all counties to have an MMP
- EGLE Director call for plans
- Funding is included
 - Regional incentives
- Counties will have 6 months to
 - Identify CAA & complete tasks
 - Regional Outreach
 - Submit NOI

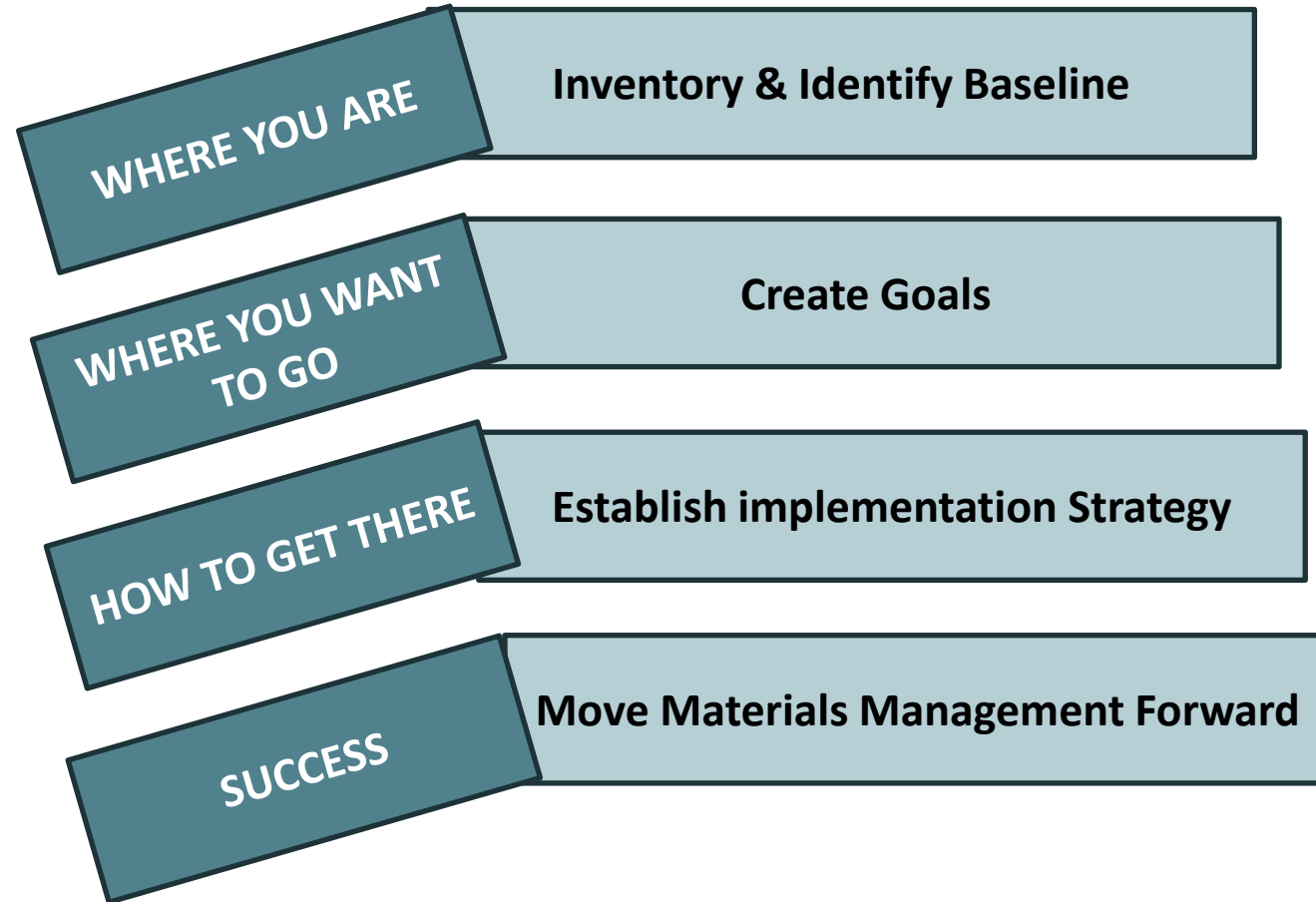


WHAT: YOU NEED TO KNOW CONTINUED

- Focus has shifted towards materials management
- Help to set/achieve priorities & the vision for each Planning Area
- Create needed infrastructure & programs for utilization
- Move Michigan forward toward overall goals
- Bring back the personnel resources statewide
- Grant Programs are available
- Until New MMP is approved:
 - Current Solid Waste Management Plans stay in effect
 - Mechanisms & Import/Export stay intact



WHAT: MMP OVERVIEW

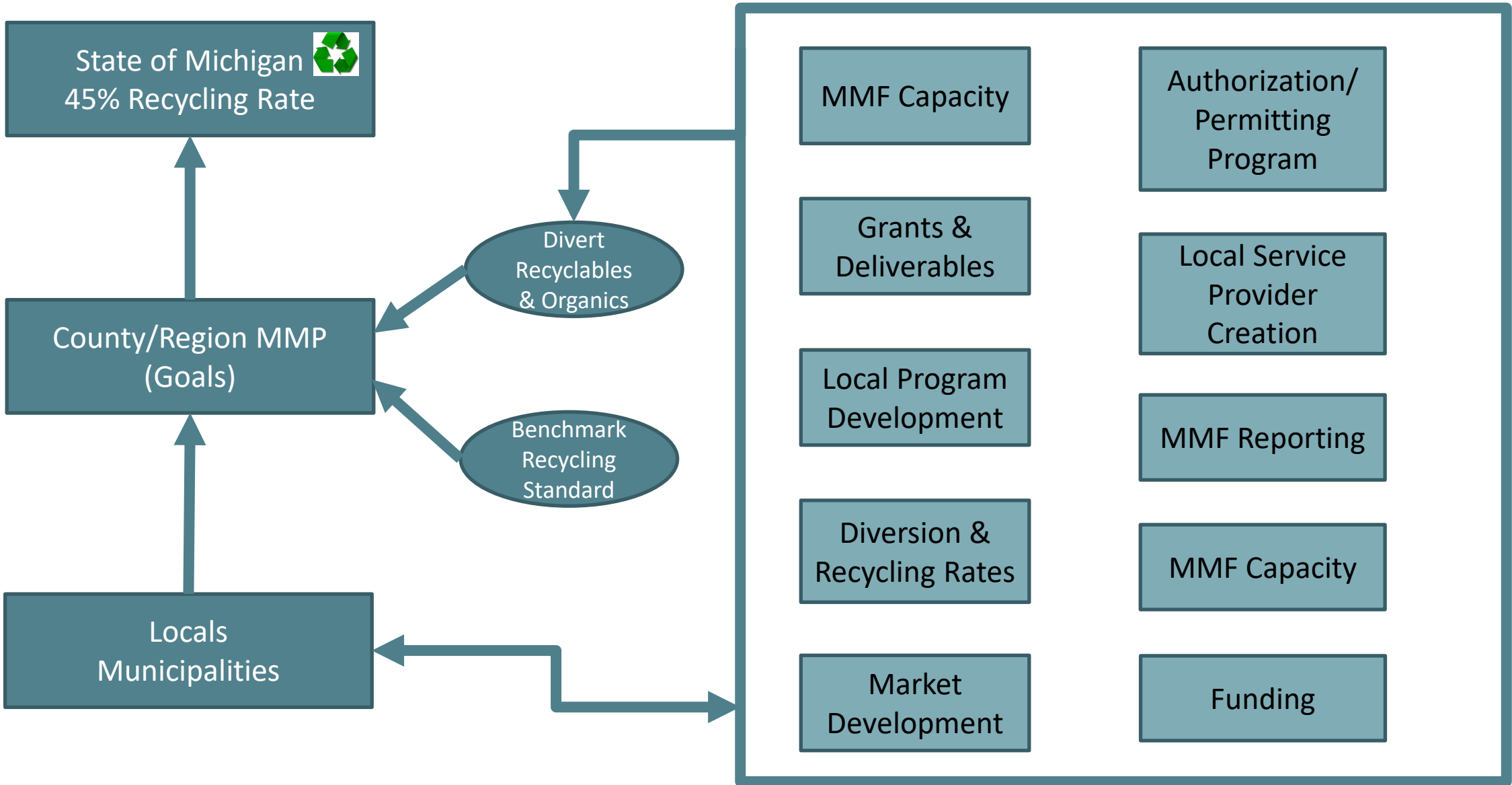


WHAT: MMP COMPONENTS

MATERIALS MANAGEMENT PLAN

- ✓ Demographics
- ✓ Database
- ✓ Materials Management Goals and Objectives
 - ✓ Diversion of Organics & Recyclables from Disposal
 - ✓ Benchmark Recycling Standards
 - ✓ MSW Recycling Rate
 - ✓ Implementation Strategy
- ✓ Materials Management Infrastructure & Systems
 - ✓ Inventory of all facilities & Capacity
 - ✓ Transportation Infrastructure
- ✓ Management Components & Responsible Parties
- ✓ Siting Mechanism: Development of needed facilities
- ✓ Materials Utilization Education & Outreach Programs





MATERIALS MANAGEMENT PLAN (MMP) PARTIES

- County Board of Commissioners (BOC) or elected county executive, as appropriate
- County Approval Agency (CAA)
 - Primarily responsible for all aspects of the MMP
- Designated Planning Agency (DPA)
 - Administers and prepares the MMP through the direction of the MMPC
- Materials Management Planning Committee (Planning Committee/MMPC)
 - Identifies planning area priorities and directs the DPA for MMP preparation



MATERIALS MANAGEMENT PLAN (MMP) PARTIES

County Board of Commissioners (BOC) Duties:

- Receives request from EGLE to prepare a MMP
- Files Step 1 of the Notice of Intent (NOI) to prepare the plan*
- Distributes the MMP grant money to the CAA within 60-days of receipt
- Automatically responsible for Plan implementation if EGLE prepares MMP

***NOTE:** If the BOC declines preparation of the MMP, the BOC shall advise the municipalities and the Regional Planning Agency (RPA) of their decision. The municipalities or RPA can request an extension to allow the parties an opportunity to determine who will file the NOI. If an NOI is not filed, the EGLE shall prepare the MMP.

MMP PARTIES - CAA

County Approval Agency (CAA):

- **Primarily responsible for all aspects of the MMP & Implementation**
- Identifies Designated Planning Agency (DPA) & Appoints Planning Committee
- Oversees the creation & implementation of the DPA's work program
- Receives & utilizes the MMP Grant funds
- MMP approval rights at various stages of the process
- Primarily responsible for identifying capacity needed for the planning area



MMP PARTIES - DPA

Designated Planning Agency (DPA) Duties:

- Serves as the **primary government resource** in the planning area for information about the MMP and the MMP development process
- Prepares the MMP work program
- Under the direction of the Planning Committee, **prepare** the MMP
- Ensures approval process and submittals comply with the statute
- **Shall have the necessary expertise and the legal, financial, and institutional capabilities to prepare the plan.**
- May be the following:
 - Regional, county, or municipal planning commissions.
 - Departments of public works.
 - Road commissions.
 - Drain commissioners.
 - County executives.
 - Materials Management/Solid waste disposal authorities.



MMP PARTIES: PLANNING COMMITTEE

Materials Management Planning Committee (Planning Committee/MMPC) Duties:

- Directs the DPA in the preparation of the MMP
- Reviews and approves the DPA work program
- Identifies relevant local policies and priorities
- Ensures coordination in the preparation of the MMP
- Advises county (or counties, if multi-county) and municipalities
- Ensures that the DPA is fulfilling all the requirements and rules promulgated under this part, as to both the content of the MMP and the public participation requirement
 - Notify the applicable parties of any identified deficiencies
- Approves MMP prior to public comment
- Provides the final level of approval of the MMP before it is presented for CAA approval

MATERIALS MANAGEMENT PLANNING COMMITTEE

- 1 Solid waste disposal facility
- 1 Managed materials hauler
- 1 Materials recovery facility
- 1 Compost or anaerobic digester facility
- 1 Waste diversion, reuse, or reduction facility
- 1 Environmental interest group
- 1 Elected official for each: County; Township; and City or Village
- 1 Individual that generates a managed material
- 1 Regional planning agency
- OPTIONAL: An adjacent community business representative



Multi-County MMP: Standard MMPC plus the following may be appointed per additional county

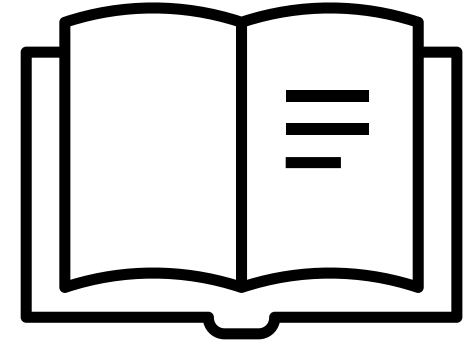
- 1 Elected county or municipal government official
- 1 Business that generates managed materials within the planning area

WHAT: OUTCOMES OF EGLE PREPARED MMP

- Regional approach preference: County may be added to regional MMP
- NO MMP grant funding
- Develop MMP using the standard format & specific requirements
- BOC responsible for implementation

EGLE Prepared Plan

- All Materials Utilization Facilities' that comply with local zoning requirements, to be consistent with the MMP.
- No additional landfill capacity
- Require waste haulers to provide recycling pickup

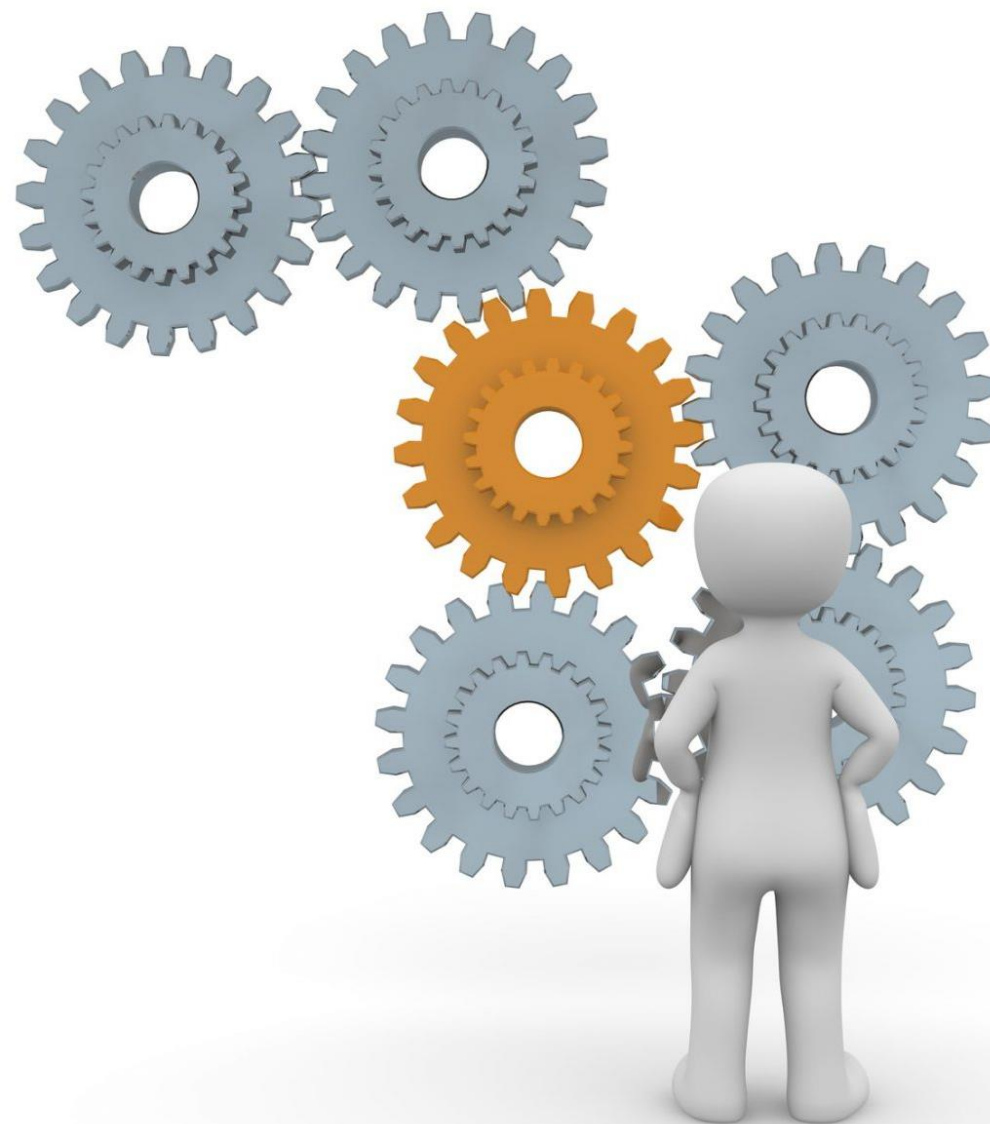


WHY: BENEFITS COLLABORATION

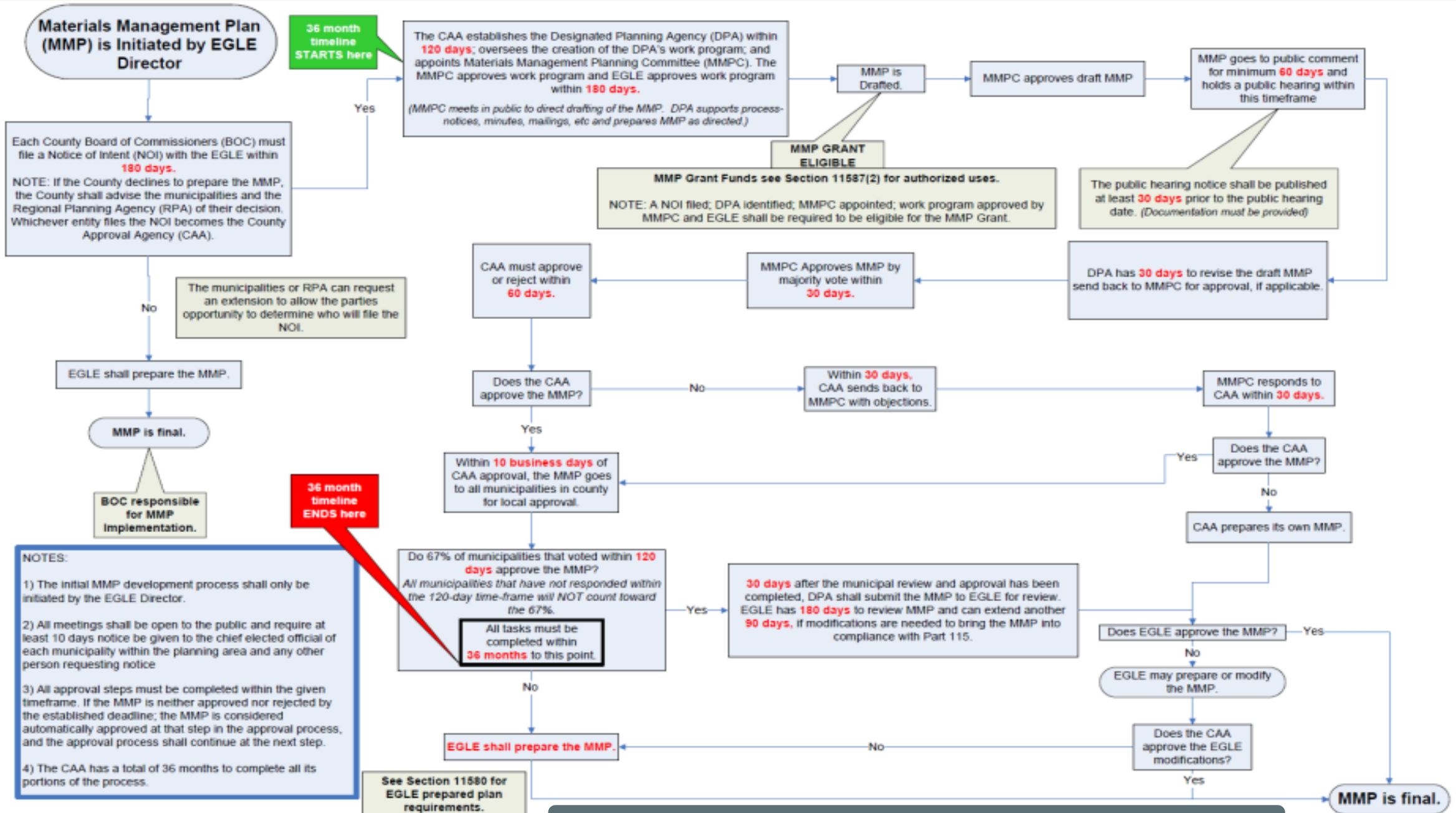
- Additional MMP Grant \$\$
- Easier to fill MMPC seats
- Pool resources
- Create/utilize staff with expertise
- Streamlined access to regional facilities
- Similar challenges/opportunities
- Unified education plan = easier to use & market materials
- Increase service options for region
- Economies of scale = improved efficiencies & reduces costs



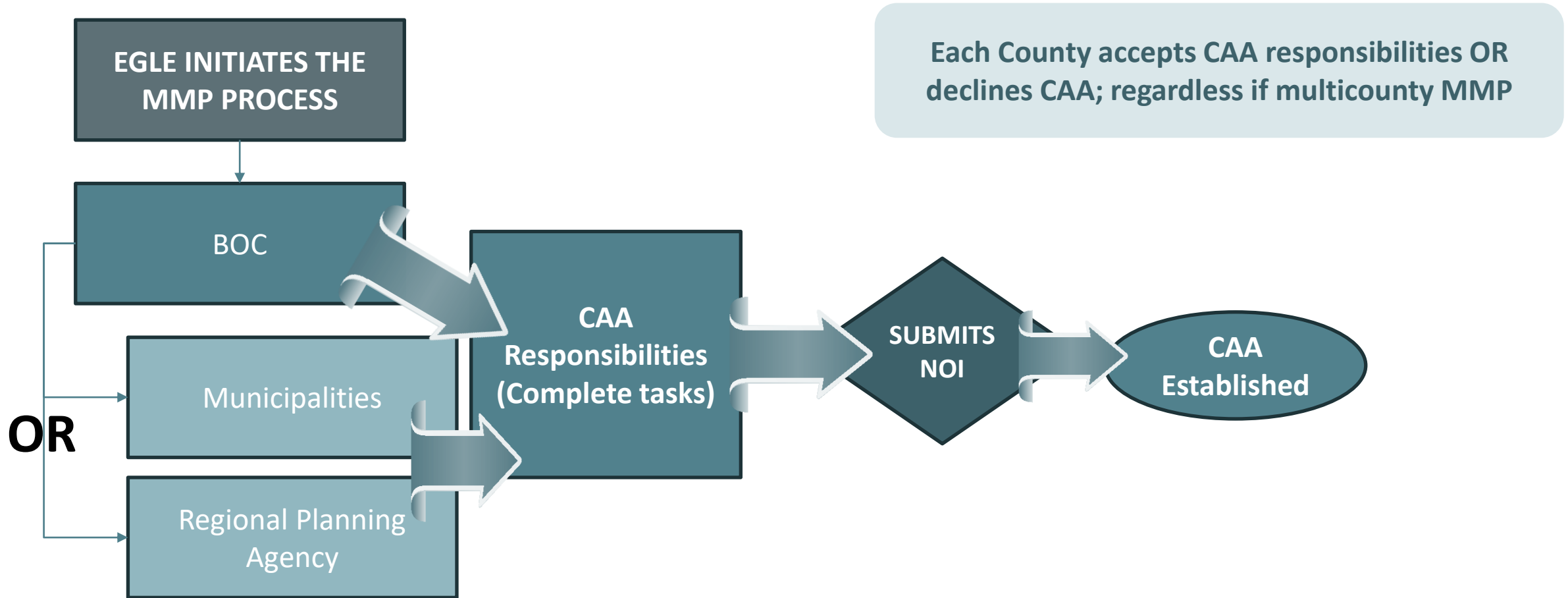
MMP PROCESS AND RESOURCES



MATERIALS MANAGEMENT PLAN DEVELOPMENT AND APPROVAL



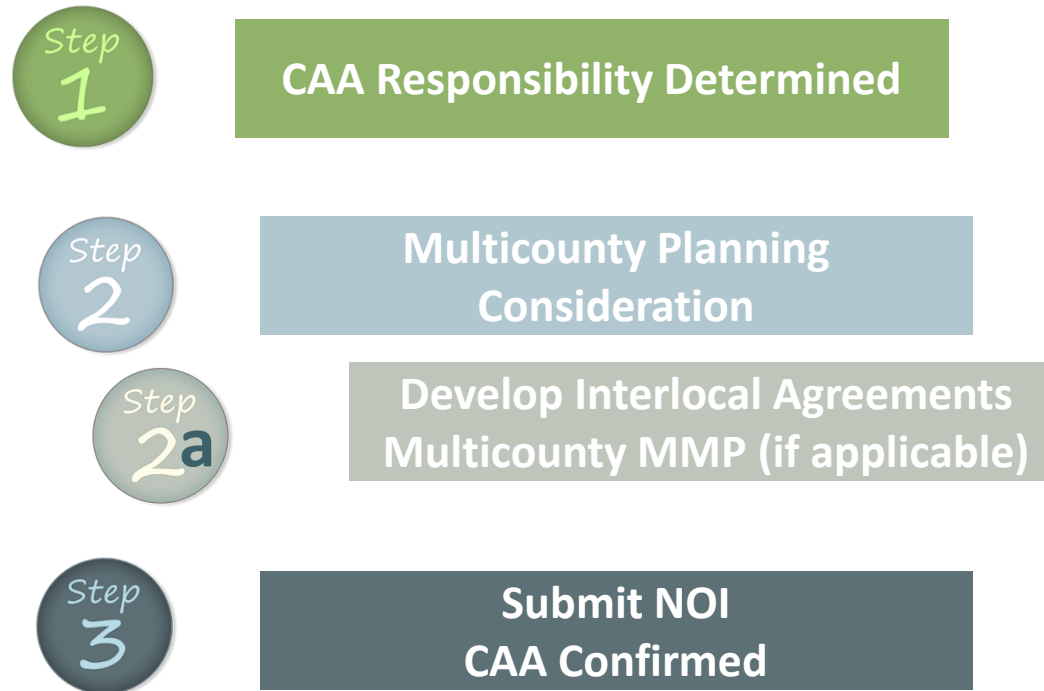
MMP - INITIAL PROCESS OVERVIEW



MMP INITIATION CAA

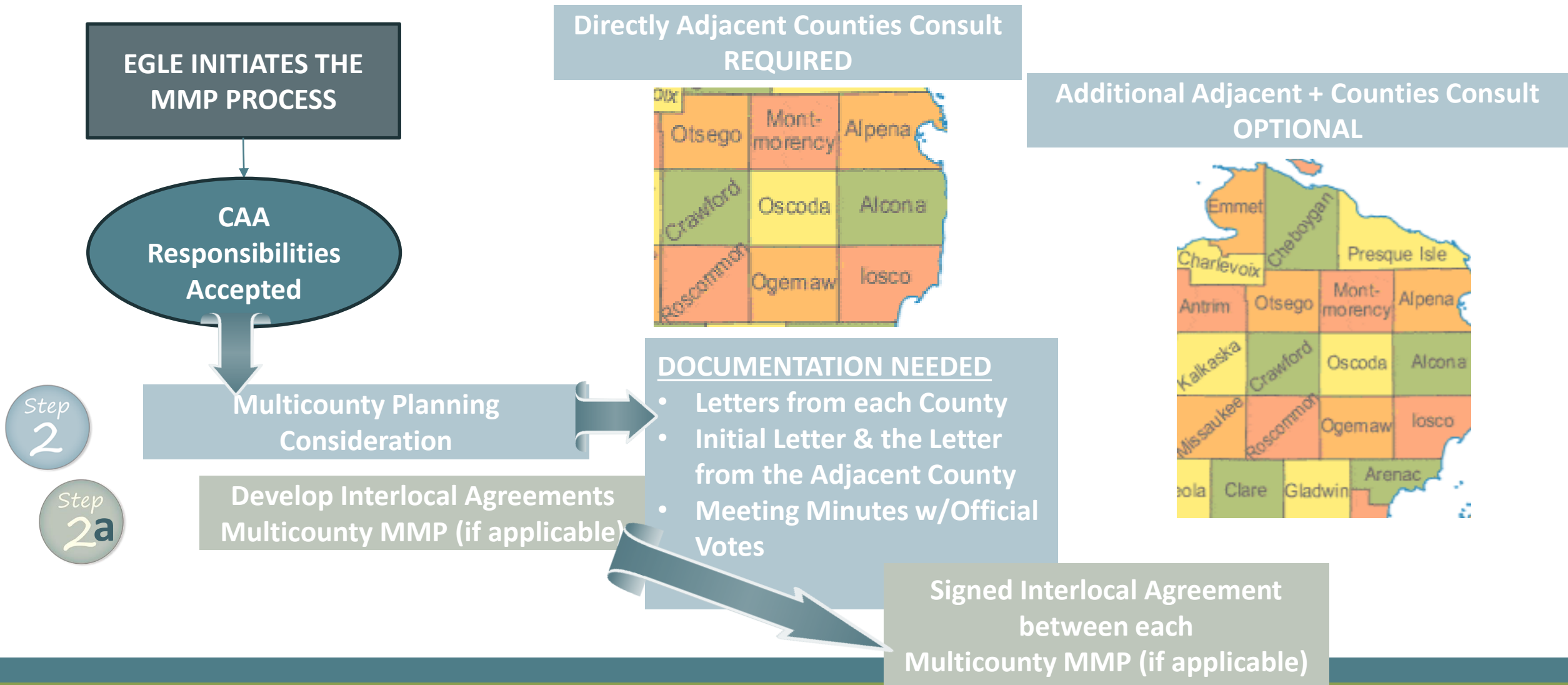
OUTLINE OF STEPS: EGLE DIRECTOR INITIATES THE MMP PROCESS

(THE COUNTY HAS 180 DAYS TO FILE THE NOI)



FILING OF THE NOI – STARTS THE 36 MONTH TIMEFRAME FOR DRAFTING & APPROVALS

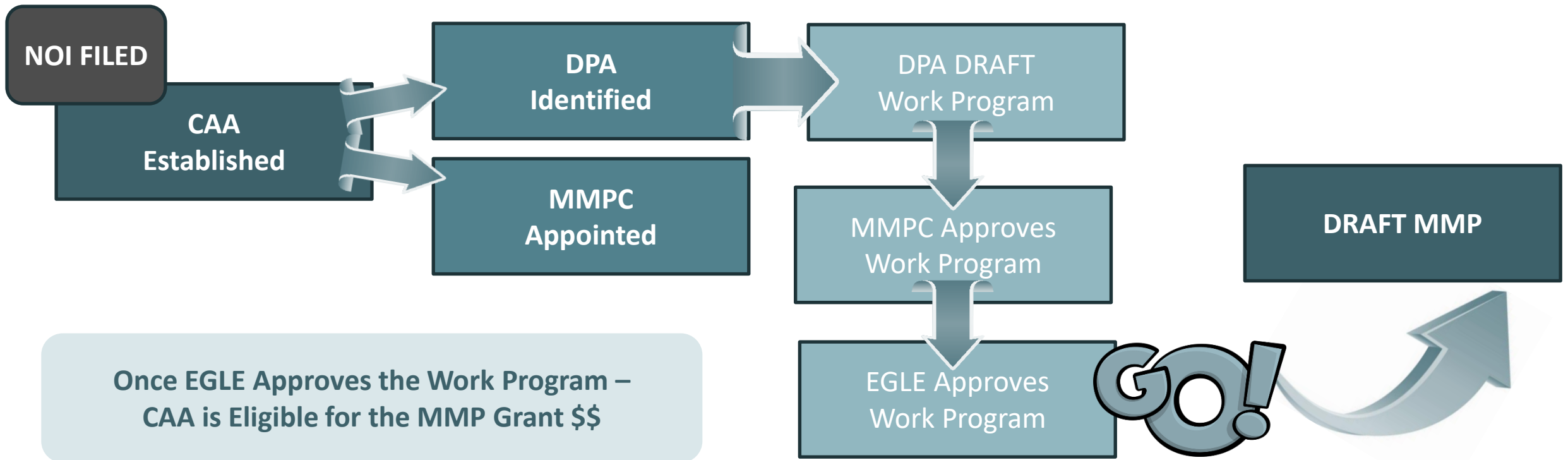
INITIAL PROCESS ADJACENT COUNTY CONSULT



MMP INITIATION CAA NEXT STEPS

CAA Filed NOI

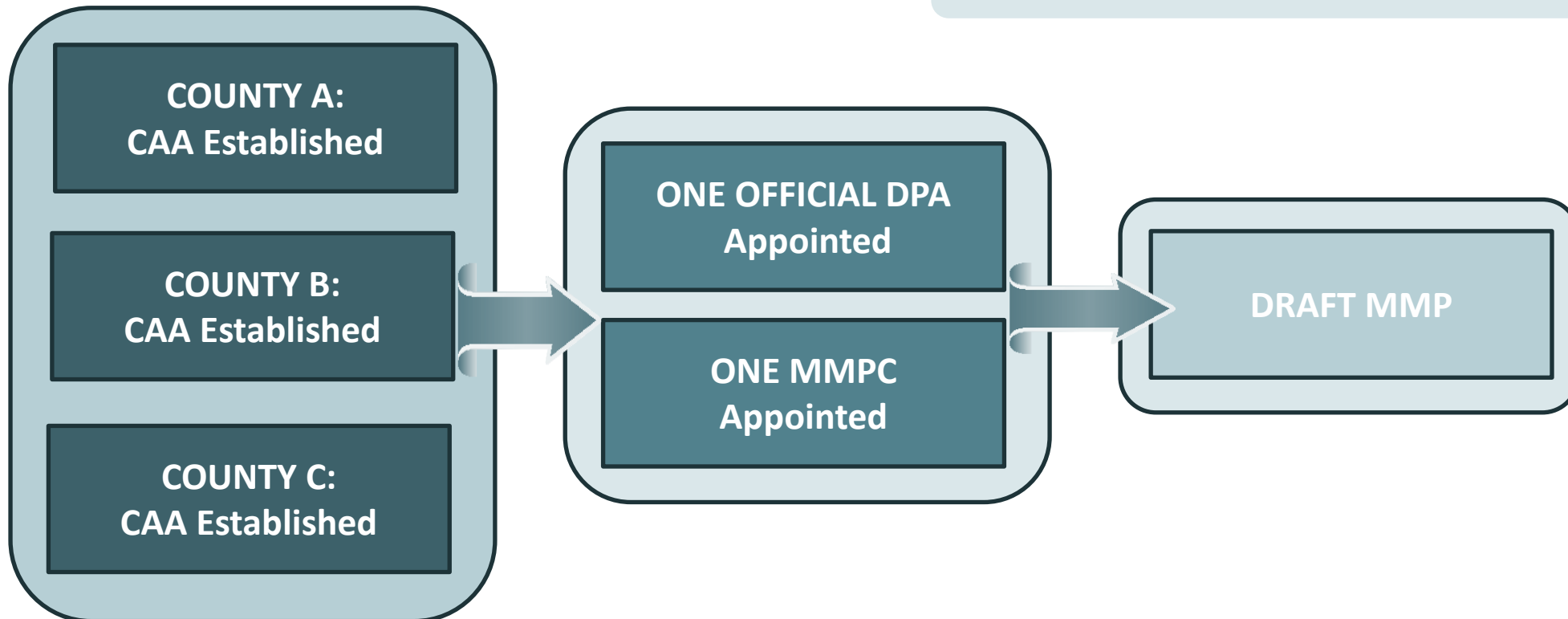
(THE CAA HAS 180 DAYS TO COMPLETE ALL TASKS BELOW)



CAA STEPS MULTICOUNTY

CAA Filed NOI – EACH COUNTY

Appointments per Interlocal Agreement



MMP GRANTS

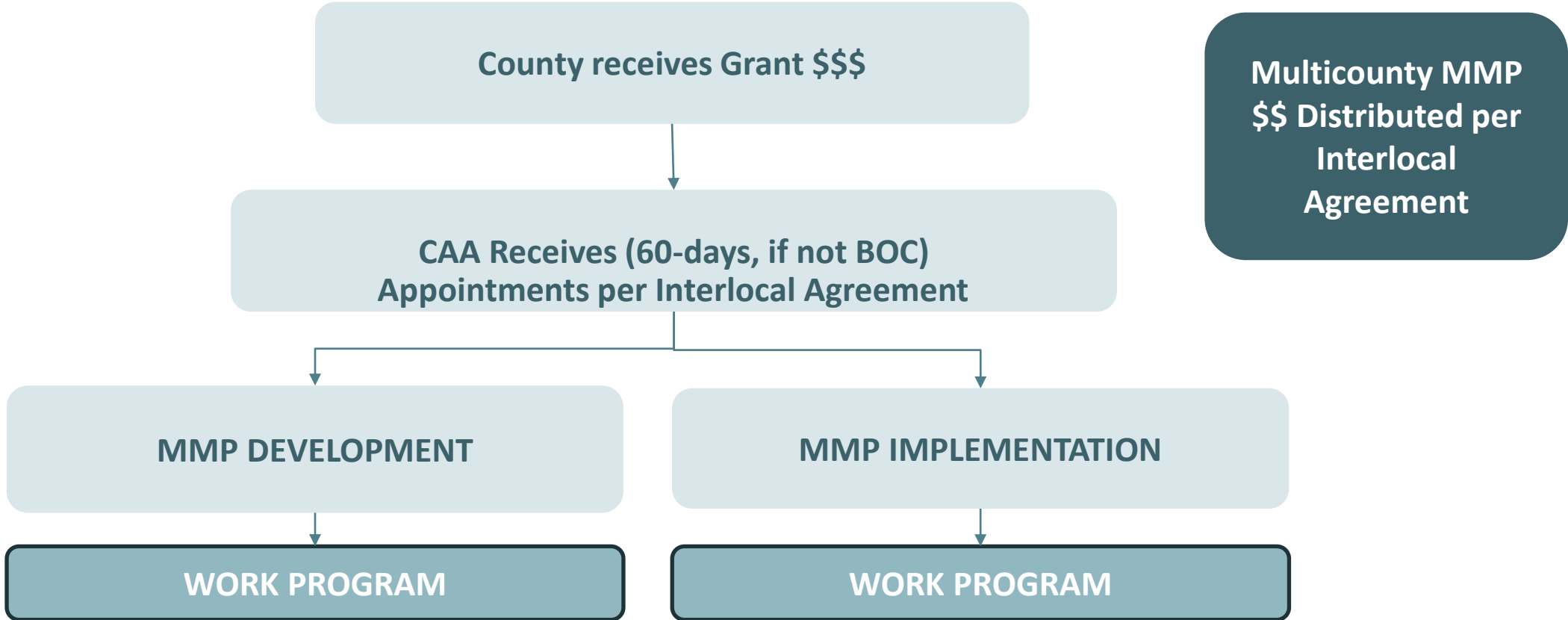
Annual MMP Grants & Regional Incentives

- Covers local costs for preparing, implementing, and maintaining MMPs
- \$60,000 for each county
- \$10,000/county additional for multi-county planning
- \$0.50 per capita, up to \$300,000,
 - Cover the higher upfront costs of initiating the new planning process (First 3 years only)



MMP GRANTS

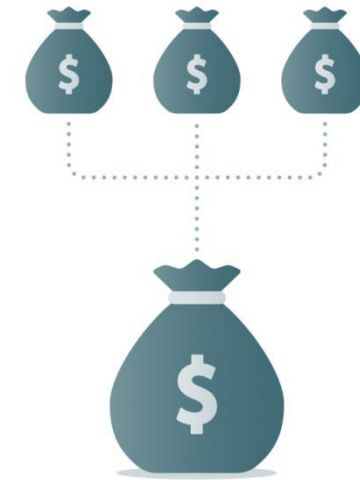
Annual MMP Grants



MMP GRANT CONTINUED

Funds can be used for administrative costs for preparing, implementing, and maintaining an MMP.

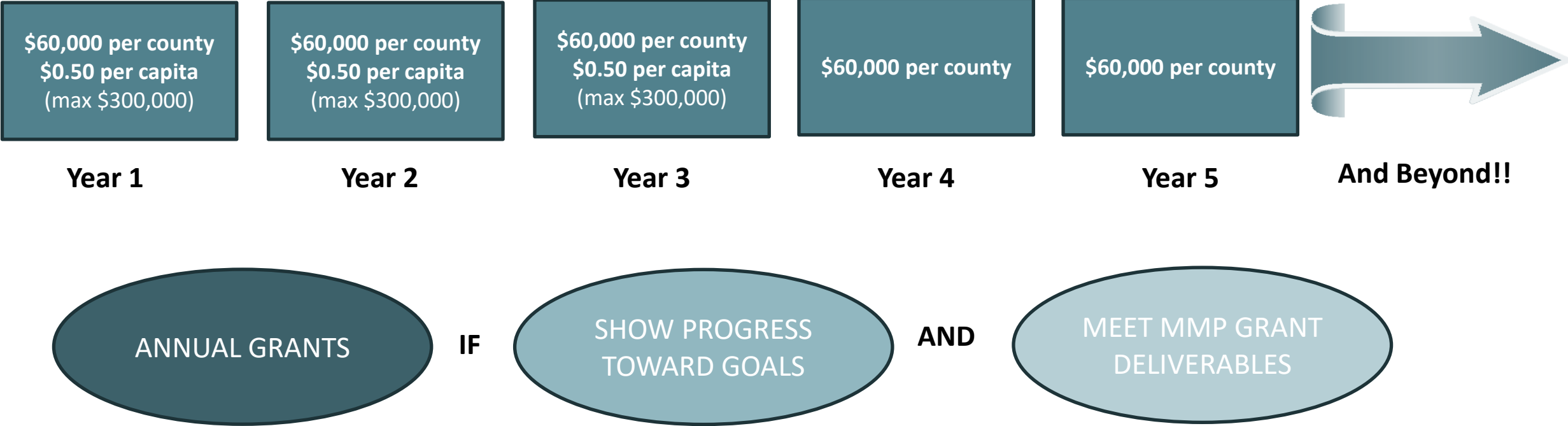
- Development of a work program
- Developing and amending an MMP
- Public participation
- Consistency reviews
- Facility reporting purposes
- Recycling education & outreach
- Establishing and continuing recycling & materials utilization programs
- Preparing reports for EGLE
- Support for the MMP & planning process
- Other efforts related to MMP implementation



NOTE: Funds can be used for implementation immediately so long as the MMP development costs take precedence

MMP GRANT CONTINUED

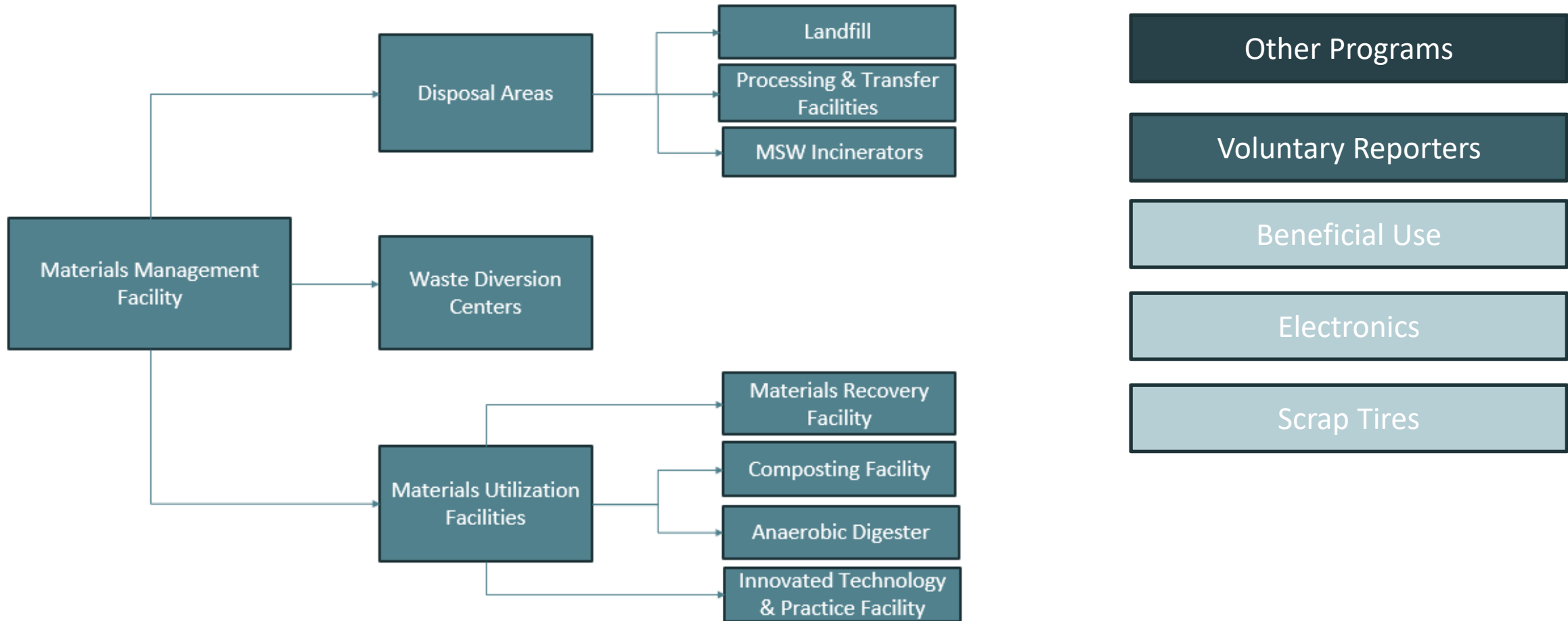
5 Year Cycle for MMP Grant Funding



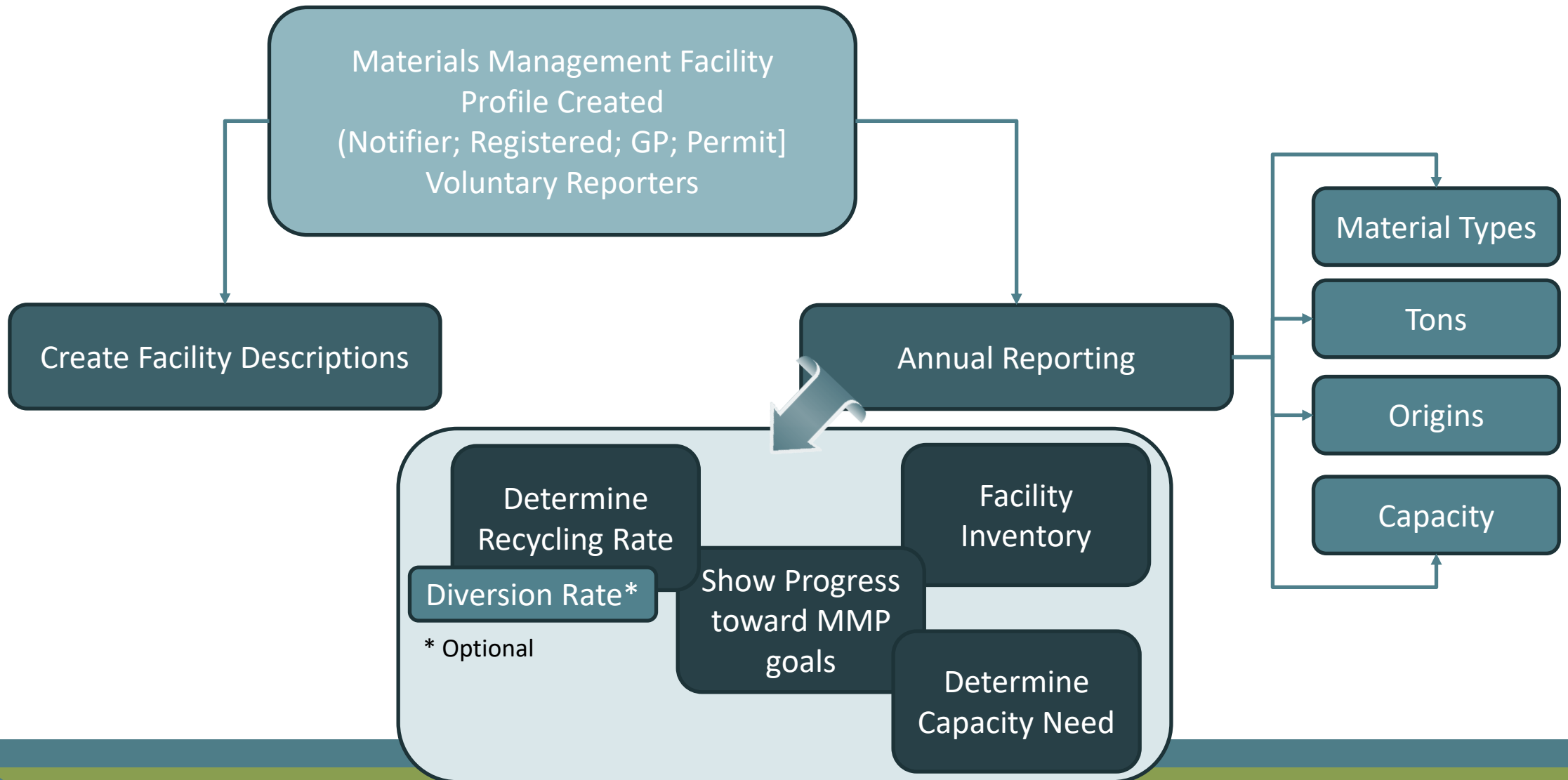
ADDITIONAL FUNDING SUPPORT (DEFINED IN PART 115)

- **Local Recycling Innovation Program** (*Recycling Infrastructure Grants*)
 - Not tied to MMP
- **Recycling Markets Program** (*Market Development Grants*)
 - Not tied to MMP
- **Recycling Access & Voluntary Participation** (*Not Yet Started*)
 - MMP approval needed
 - Progress needed

FACILITY AUTHORIZATION PROGRAM



FACILITY AUTHORIZATION PROGRAM



HOW: RESOURCES TO HELP

- MMP Webpage: www.Michigan.gov/EGLEMMP
 - MMP Quick Guide: [Planning Quick Guide](#)
 - Planning Hub (official submittal items)
 - [Mega Data](#)
 - Data collection project
 - [Authorization Program](#)
 - Online reporting for required and voluntary materials management facilities.
- Recycling Team: <https://www.Michigan.gov/MIRECYCLES>
- GIS Mapping: [Michigan Materials Management Facilities \(arcgis.com\)](#)



MMP Quick Guide



- Glossary
- Goals & Objectives of MMP
- MMP Overview
- MMP Requirements
- Responsible Parties & Responsibilities
- County Approval Agency (CAA)
- Designated Planning Agency (DPA)
- Materials Management Planning Committee
- Plan Development & Approval Process
- MMP Grants
- Multicounty MMP
- Resources Available

WHAT TO FOCUS ON NOW

- Review MMPC appoint requirements
- Adjacent County discussions
 - Potential partnerships
- Confirm current DPA
- Engage in planning discussions
- Watch the MMP Website for resources

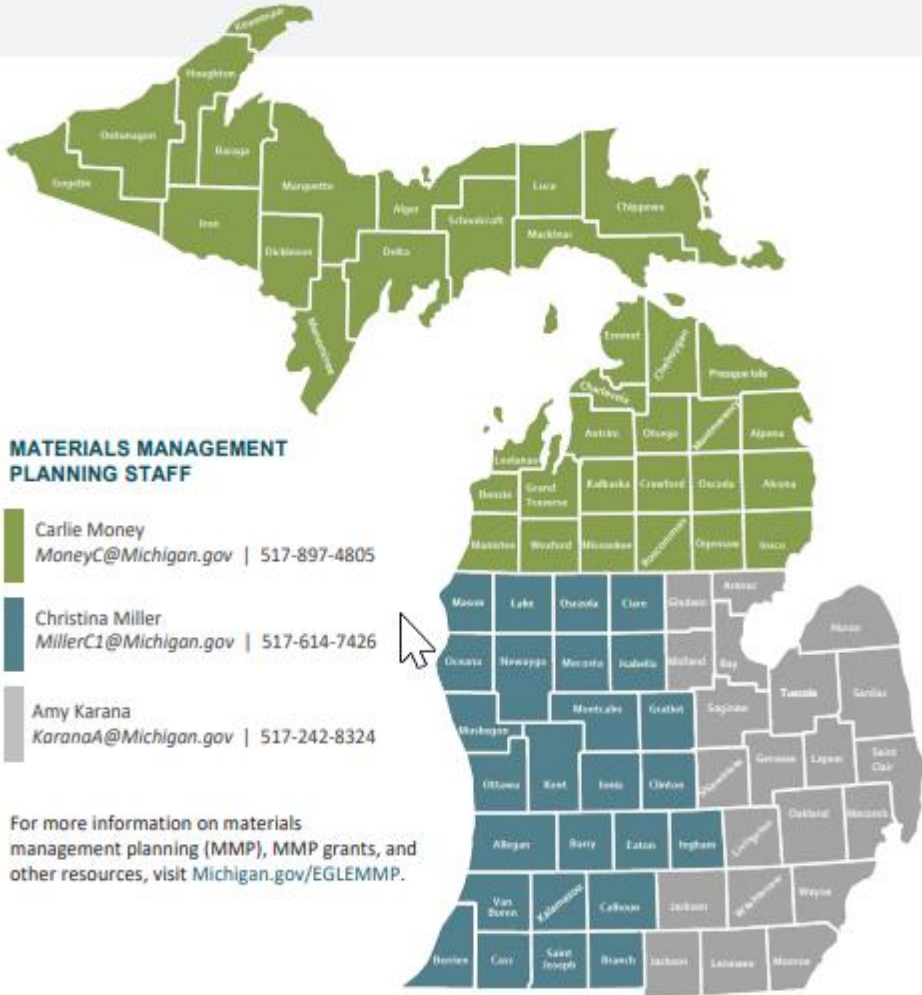


- Letters to BOC to initiate the process

WHERE TO FIND MORE INFORMATION?

- **MMP Workgroup Meeting:** 3rd Wednesdays (1:30 – 3:00)
 - Oct 18th: Notice of Intent & First Steps [[LINK TO JOIN](#)]
 - Nov 15th: TBD (tentative)
- **Planning Website:** www.Michigan.gov/EGLEMMP
- **GovDelivery (Listservs)**
 - [Materials Management News and Info](#)
 - [Materials Management Planning](#)
- **Where to send questions:** EGLE-MMP@michigan.gov

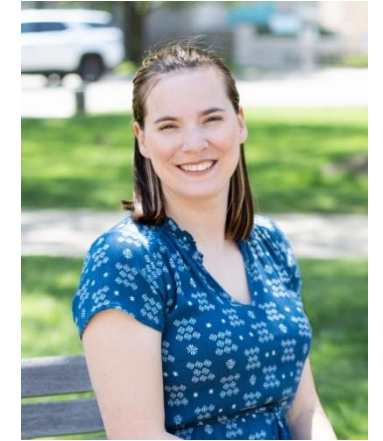




Christina Miller
Materials Management Planning Specialist
EGLE



Amy Karana
Materials Management Analyst
EGLE



Carlie Money
Materials Management Analyst
EGLE

[Website: Planning Staff Program Map](https://Michigan.gov/EGLE)

Michigan Department of Environment, Great Lakes, and Energy | 800-662-9278 | Michigan.gov/EGLE

EGLE does not discriminate on the basis of race, sex, religion, age, national origin, color, marital status, disability, political beliefs, height, weight, genetic information, or sexual orientation in the administration of any of its programs or activities, and prohibits intimidation and retaliation, as required by applicable laws and regulations.

To request this material in an alternate format, contact EGLE-Accessibility@Michigan.gov or 800-662-9278.

Rev. 08/2023

TOOLS AND RESOURCES TO ASSIST IN MATERIALS MANAGEMENT PLANNING



EGLE Recycling Program

Increase **Access** to and **Participation** in recycling opportunities

Inform residents and businesses on **How, Where, and Why to Recycle**

Take an **Equitable & Inclusive** approach to expanding recycling in diverse communities.

Train the recycling professionals of tomorrow

Improve the **Quality** of recycled materials

Grow **Markets** for recycled materials

Expand **Infrastructure** to grow recycling capacity

Form **Partnerships** to finance recycling activities

Recycling as a Climate Solution to **Decarbonization**

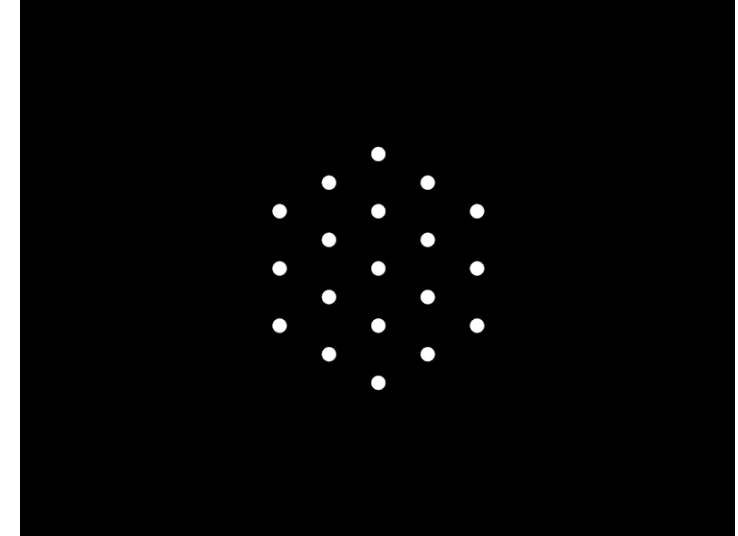
TOOLS TO SUPPORT COMMUNITY, BUSINESS, PROGRAMS

- Education/Outreach
- Quality/Quality Improvement
- Access
- Technical Assistance
- Infrastructure
- End Markets



Key Dots You Should Connect

- 1) Part 115 created a new regulatory framework for recycling and composting facilities (**and** a level playing field will not alone create the conditions necessary for program growth)
- 2) Recycling markets in Michigan are strong and growing (**and** there is no sense collecting a material if there is not a regional end market to use the material).
- 3) The new Materials Management Planning Program is a game changer (**and** it cannot alone create the conditions where recycling programs and businesses will thrive)
- 4) Funding is available to jumpstart your programs (**and** it is not enough to sustain programs long term)



State of Michigan Recycling Goals

21% Recycling Rate announced at April 2023 “Recycling State of State” Press Event.

45% IS Achievable with Policy, Funding, Tools, Resources.

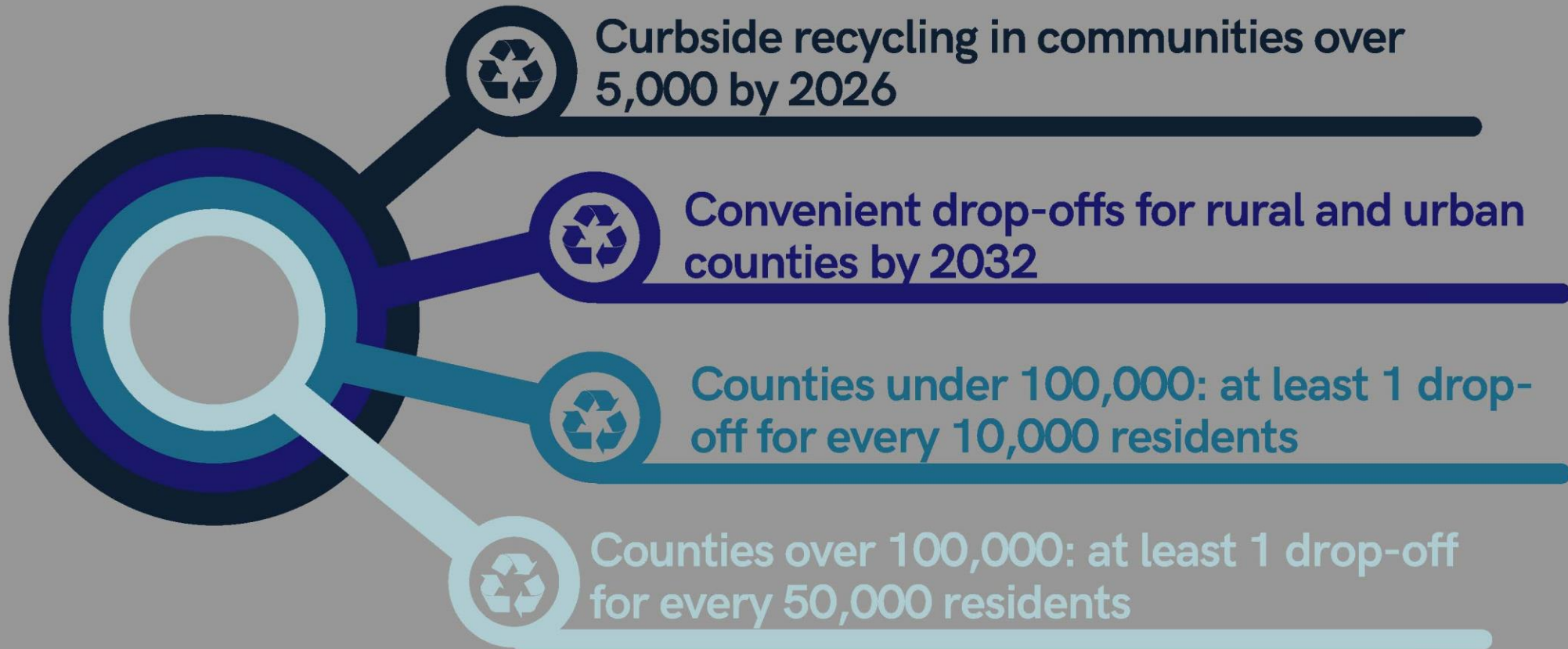
2029

2022

30% Recycling Rate - Lots of Work to Do Collectively in Next Six Years.

2030 and beyond

BENCHMARK RECYCLING STANDARDS



Benchmark Recycling Standards

- “Access” to curbside recycling means the following:
 - Recyclable materials are collected at least once every 14 days
 - If recyclable materials and waste are collected as mixed loads, the loads are delivered to a compliant facility for sorting
 - Recyclable materials collected are delivered to a compliant materials recovery facility
 - Curbside recycling is offered by all haulers servicing the geographic area, so that a resident may contract for recycling services regardless of their selected service provider
- Drop-off recycling sites must be available at least 24 hours per month.

TECHNICAL ASSISTANCE

- Program/Project Implementation, Expansion Knowledge and Support
- Program Best Practices – Curbside & Drop-Off Sites
- Funding Mechanisms
- Material Quality/Contamination Reduction
- Reaching Your Target Audience
- Conduct Presentations and Outreach to Local Officials
- Much more Tell Us What ***YOU*** Need Help With



EGLE Funding Opportunities

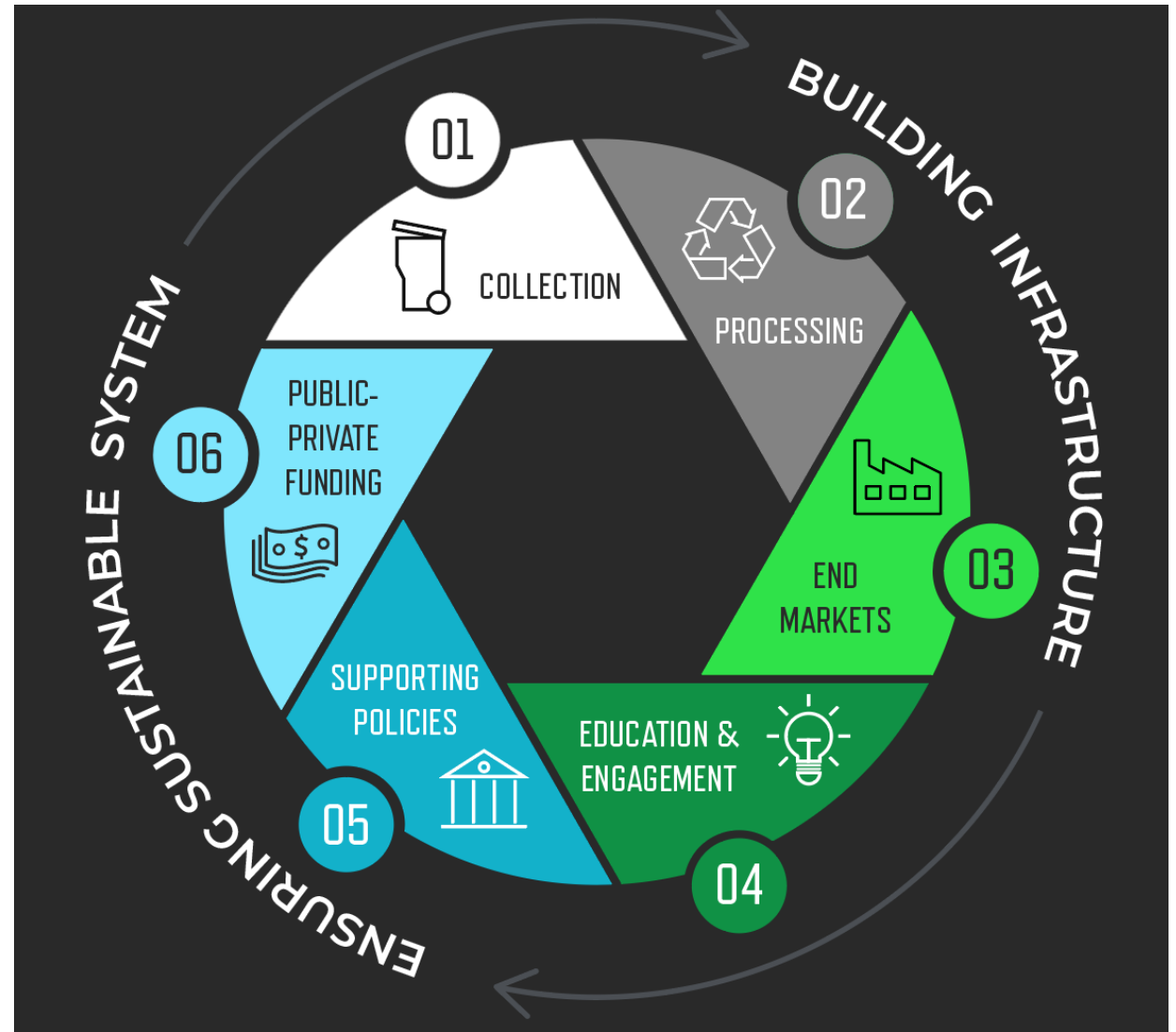


What is a Recycling Infrastructure Grant?

Expansion Grant (Expansion Metrics)

- Infrastructure Items
- How is your program going to expand?
- What is your program doing now to what is it doing next?
- Metrics = Change/Expansion/Growth
 - Increase tons diverted
 - New sectors
 - New materials collected

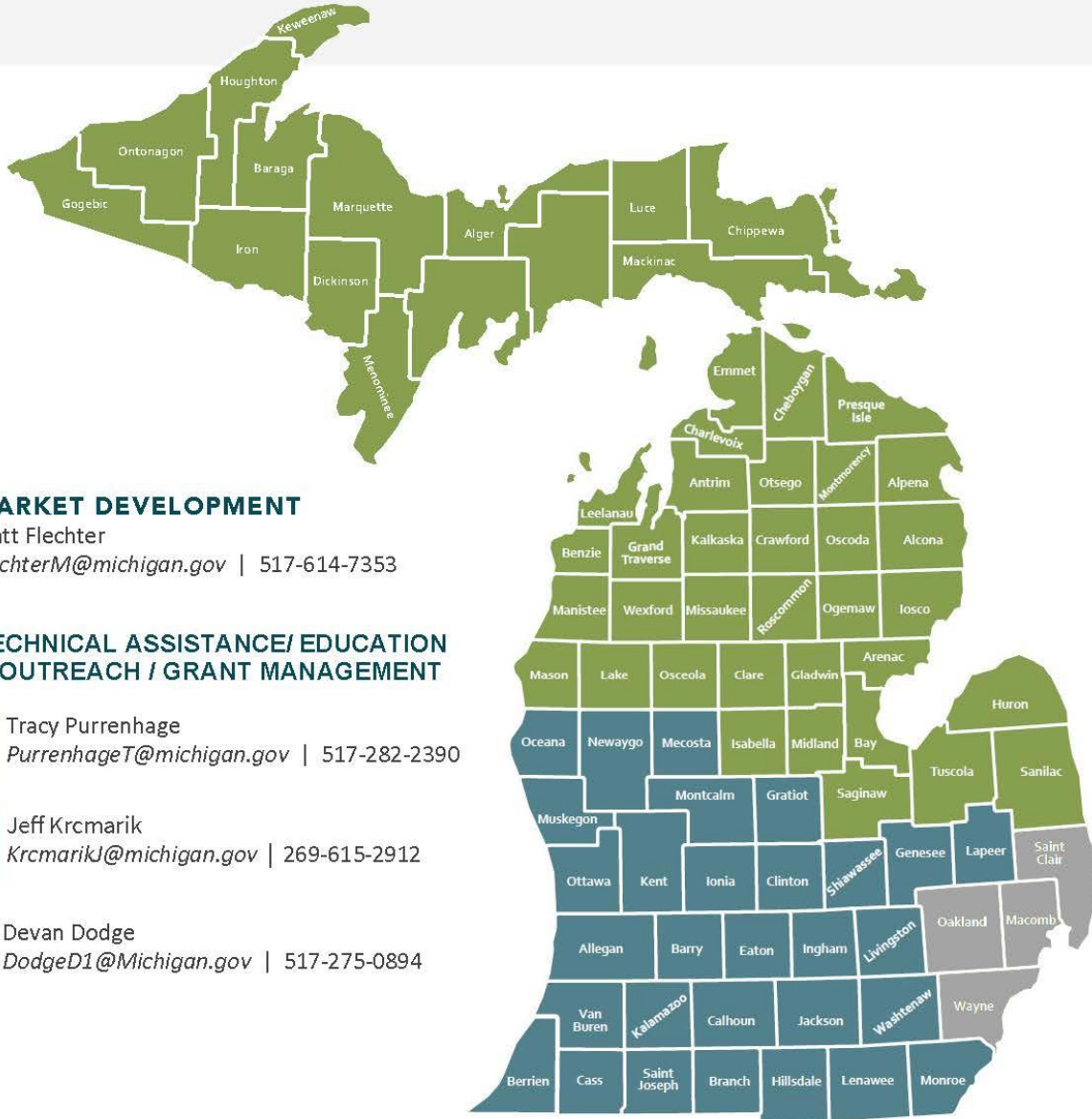
Best practices for implementing recycling



Public Sector Funding Mechanisms



EGLE RECYCLING PROGRAM



MARKET DEVELOPMENT

Matt Flechter

FlechterM@michigan.gov | 517-614-7353

TECHNICAL ASSISTANCE/ EDUCATION & OUTREACH / GRANT MANAGEMENT

Tracy Purrenhage

PurrenhageT@michigan.gov | 517-282-2390

Jeff Krcmarik

KrcmarikJ@michigan.gov | 269-615-2912

Devan Dodge

DodgeD1@Michigan.gov | 517-275-0894



EGLE STAFF RESOURCES

- Planning Team



Christina Miller
MillerC1@michigan.gov
517-614-7426



Amy Karana
KaranaA@Michigan.gov
517-242-8324



Carlie Money
MoneyC@Michigan.gov
517-897-4805

- Recycling Specialists



Tracy Purrenhage
PurrenhageT@michigan.gov
517-282-2390



Devan Dodge
DodgeD1@michigan.gov
517-275-0894



Jeff Krcmarik
KrcmarikJ@michigan.gov
269-615-2912



QUESTIONS??

Managed Materials

CAPACITY

- Recyclables Materials
- Organic Materials
- Other Diverted Materials
- Solid Waste

Focus on Utilization Capacity

Letters of Acceptance

Required Facilities to be Sited

No NEW Type II landfills

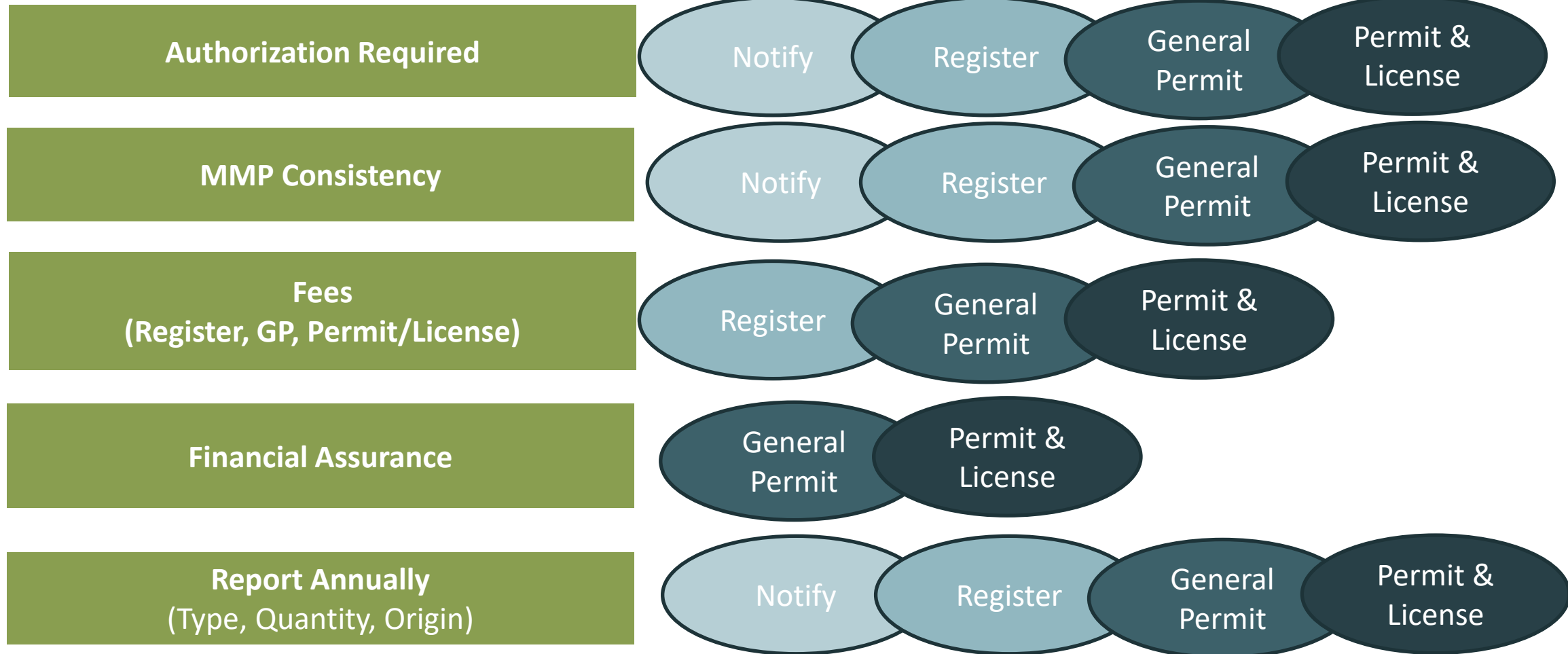
Materials Management Goals

GOALS

DIVERT FROM DISPOSAL

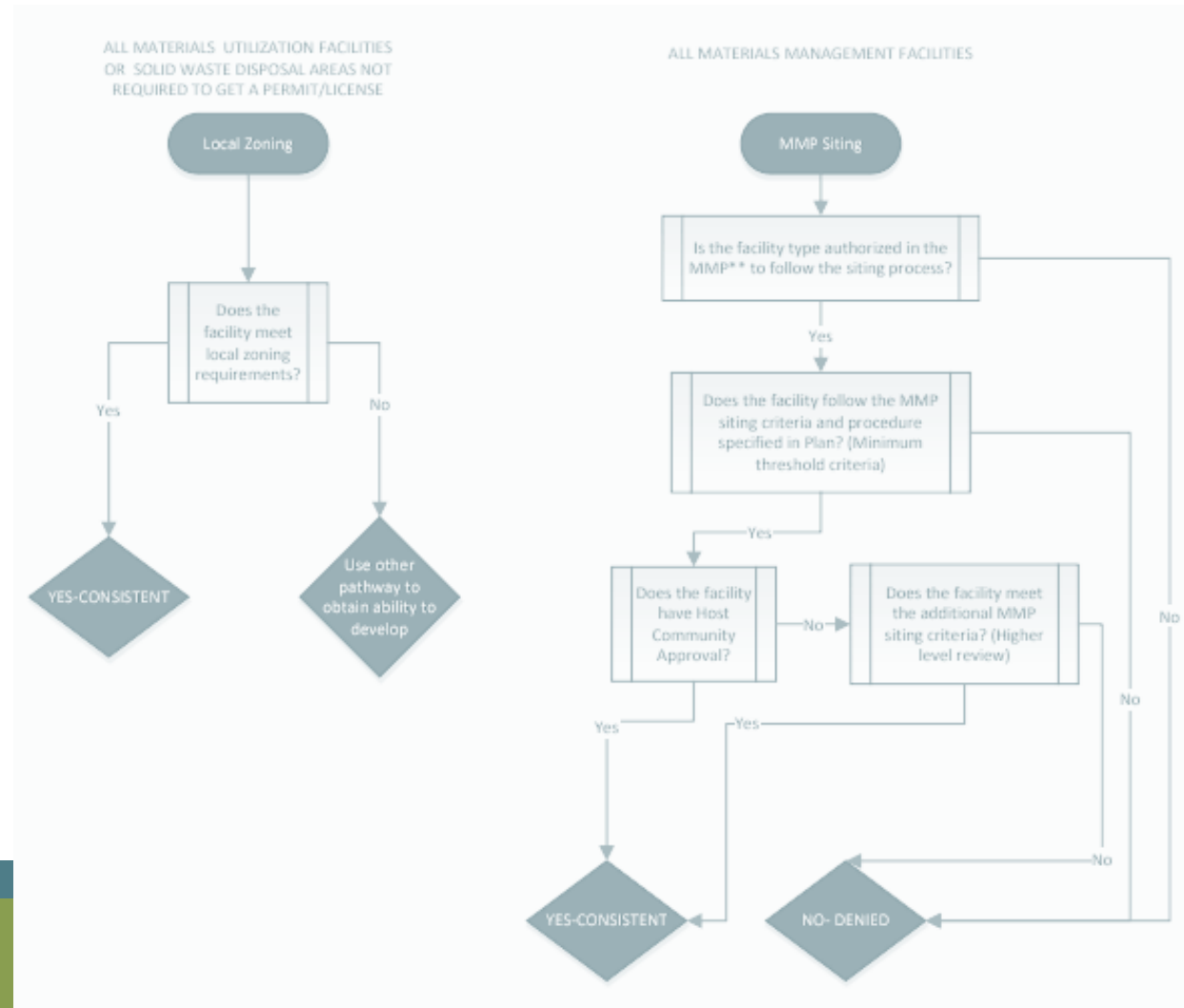
- Organics
- Recyclables
- Other Diversion Activities
- Benchmark Recycling Standard

NEW OVERALL REQUIREMENTS



NEW MATERIALS MANAGEMENT PLAN

Ensures materials management facilities that are needed can be **developed** and provides avenue for siting of NEW facilities (MUFs; Waste Diversion Centers; etc.)



Michigan Planning Regions

www.miregions.com



Region 1 - SEMCOG

Region 2 - RzPC

Region 3 - SCMPC

Region 4 - SWMPC

Region 5 - GLSPDC

Region 6 - TCRPC

Region 7 - EMCOG

Region 8 - WMRPC

Region 9 - NEMCOG

Region 10 - NNW

Region 11 - EUPRPDC

Region 12 - CUPPAD

Region 13 - WUPPDR

Region 14 - WMSRDC

MATERIALS MANAGEMENT FACILITIES GIS MAP

- Locations of Registered Facilities
 - Compost
 - Electronic Recyclers
 - Scrap Tire
 - Anaerobic Digesters
 - Processing and Transfer Stations
 - Landfills
 - Recycling Establishments

