

# HIDTA ODMAP / University of Michigan SOS Mapping System

---

*Michigan Association of Counties*

*October 2, 2023*



**ODMAP**  
OVERDOSE DETECTION  
MAPPING APPLICATION PROGRAM

**L** COLLABORATE • SHARE • INFORM &  
HELP

---

# Federal Acknowledgement

---

*This presentation is supported by the Centers for Disease Control and Prevention (CDC) of the U.S. Department of Health and Human Services (HHS) as part of a financial assistance award totaling \$11,600,000 with 100 percent funded by CDC/HHS. The contents are those of the author(s) and do not necessarily represent the official views of, nor an endorsement, by CDC/HHS, or the U.S. Government.*



# What is the Overdose Response Strategy (ORS)?

The Overdose Response Strategy is an unprecedented and unique collaboration between public health and public safety, created to help local communities reduce drug overdoses and save lives by sharing timely data, pertinent intelligence and innovative strategies.





The ORS allows us to...

---

**COLLABORATE** across public health and public safety sectors



By creating opportunities to...

---

**SHARE** data, insights and trends we are seeing related to drug overdose in our communities



We use that information to...

---

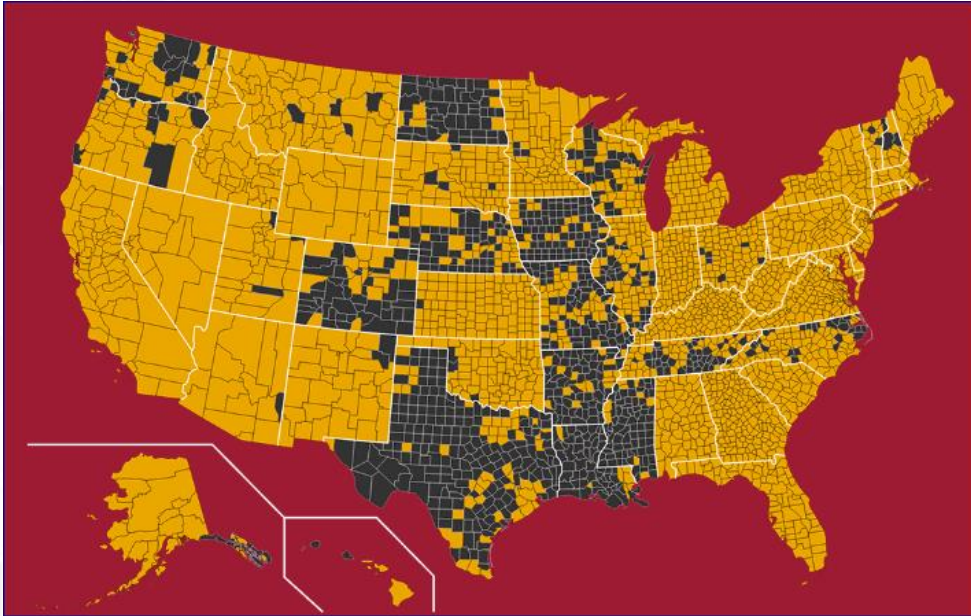
**INFORM AND HELP** local communities develop local solutions to reduce overdoses and save lives

# What is ODMAP?

ODMAP is a **free**, web-based tool that provides near **real-time surveillance** of suspected overdose events to **support public safety and public health** efforts to mobilize an **immediate response** to overdose events



# ODMAP National Engagement



ODMAP has participating agencies in **all 50 states**, the **District of Columbia**, and **Puerto Rico**.

# ODMAP Program Goals

- Provide **near real-time surveillance** of suspected overdose events
- Provide participating agencies with data to **identify** suspected overdose **occurrences** and **spikes** in near real-time
- Enable participating agencies to **develop effective strategies** for addressing overdose incidents occurring in their jurisdictions
- Enhance the development of **regional strategies** designed to **prevent the spread** of substance use disorders resulting in overdose incidents

# ODMAP Agency Eligibility

- Federal, state, local, and tribal
  - Law enforcement, fire departments, EMS agencies and medical examiners
  - Public health personnel
- Hospitals with emergency departments
  - Excludes associated researched units commonly seen with universities
- All agencies **must sign** a participation agreement prior to gaining access, which outlines the ODMAP policies and procedures



# ODMAP and HIPAA

- ODMAP is not considered a system of record – it collects location, date/time, fatality status, and naloxone administration
- The information captured by ODMAP is not considered PHI (Protected Health Information) – the location is translated into a geo-located point where an overdose occurred without any other information about a person
- W/B HIDTA and ODMAP do not retain any address information within the platform or on the server (they are deleted)
- ODMAP Zoom function is restricted to a zoom Level ID: 15 (scale of 1:18055.95)

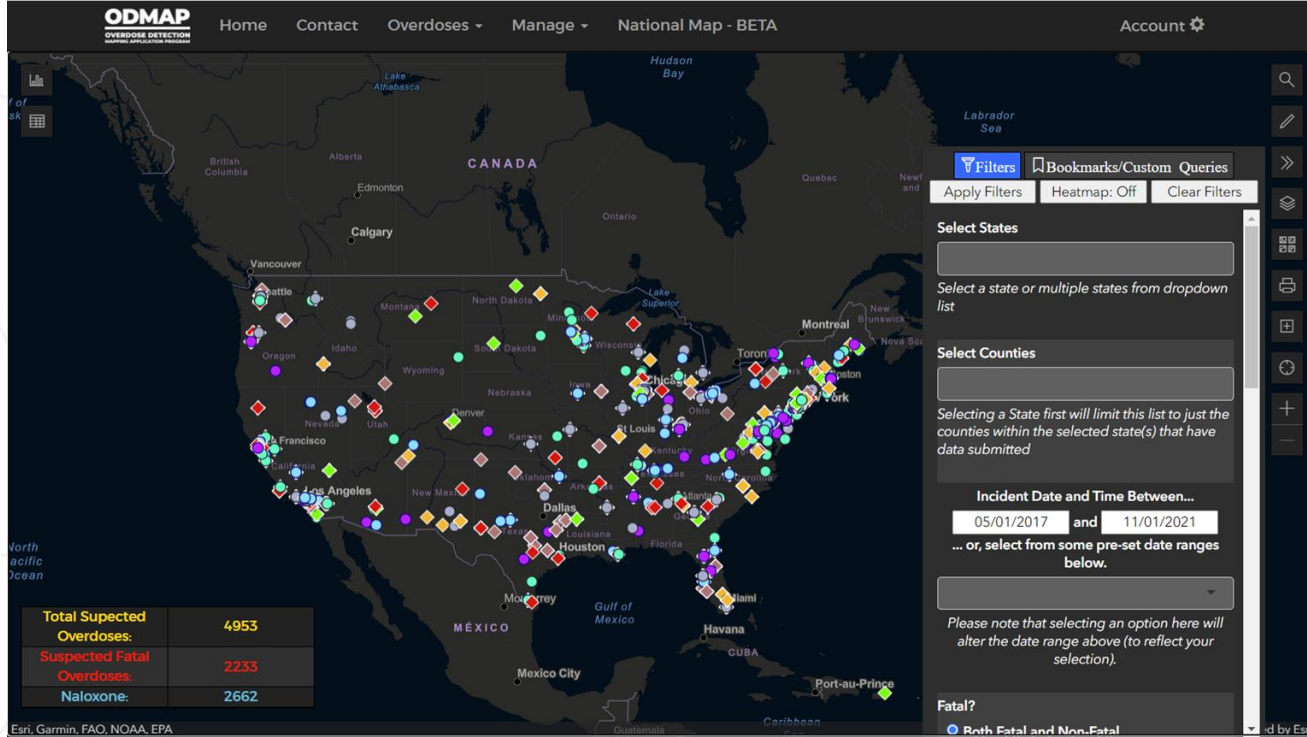
# Data Sharing

- Follow the need-to-know rule
  - **ODMAP is NOT meant for the general public / media**
- Restrict access to images, especially with individual points
- When in doubt, reach out to the data owners
- **ODMAP is not intended to be a system of record**
- For specific questions, reach out to Ali Burrell [aburrell@wb.hidta.org](mailto:aburrell@wb.hidta.org)

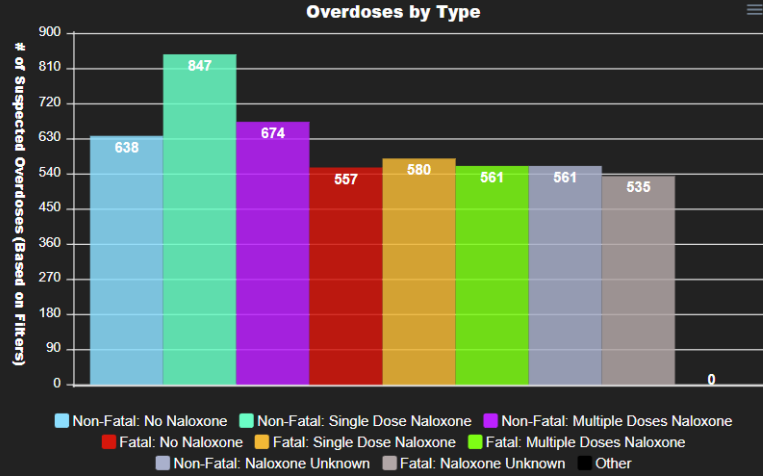
# **ODMAP Tools**

**The National Map and Spike Alerts**

# National Map and Its Features



- Overdoses By Type
- Day of Week
- Hour of Day
- Suspected ODs Per Day
- Suspected ODs Per Month
- County/State Line Chart



<b>Total Suspected Overdoses:</b>	<b>4953</b>
<b>Suspected Fatal Overdoses:</b>	<b>2233</b>
<b>Naloxone:</b>	<b>2662</b>

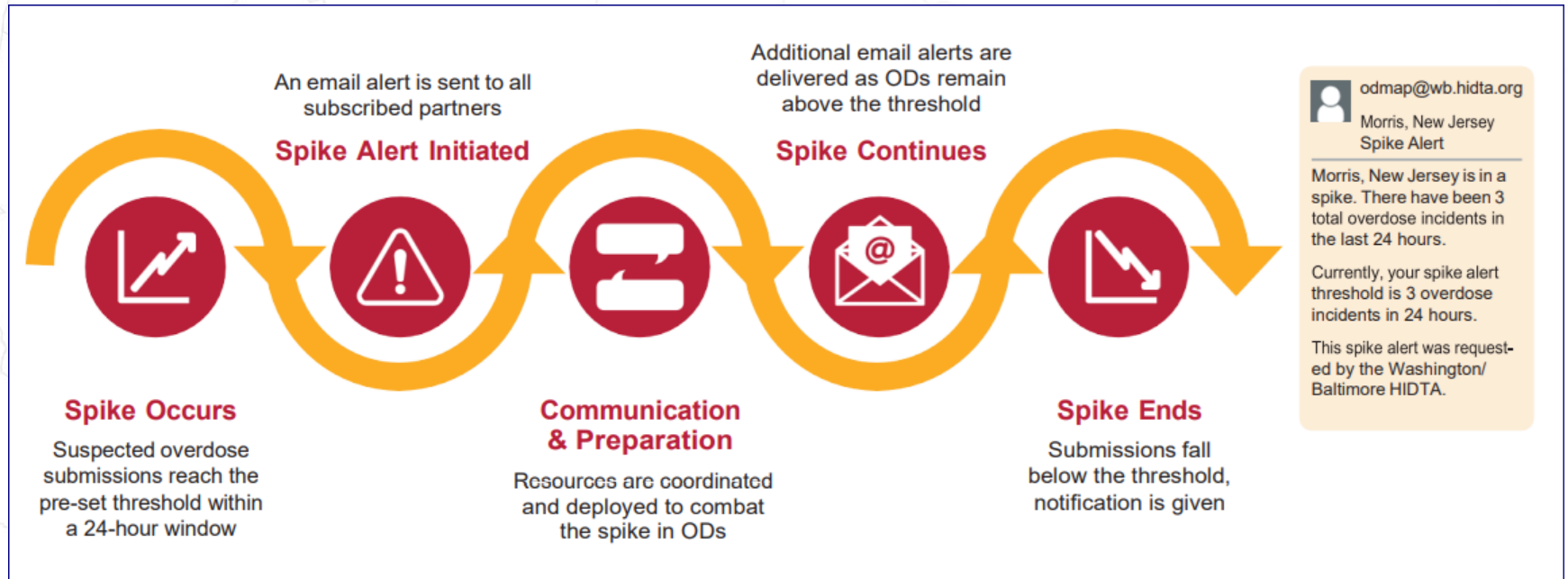
North Pacific Ocean



# ODMAP Features

- ODMAP National Map
  - Cross jurisdiction suspected event information
  - Filters
  - Heat maps
  - Charts
- Spike, Overdose, and Statewide Alerts
- Add community data and Esri web layers (points of interest, i.e. schools, treatment centers, etc.)
- Michigan data is provided mostly through Mi-EMSIS (MI EMS Information System)

# Spike Alerts

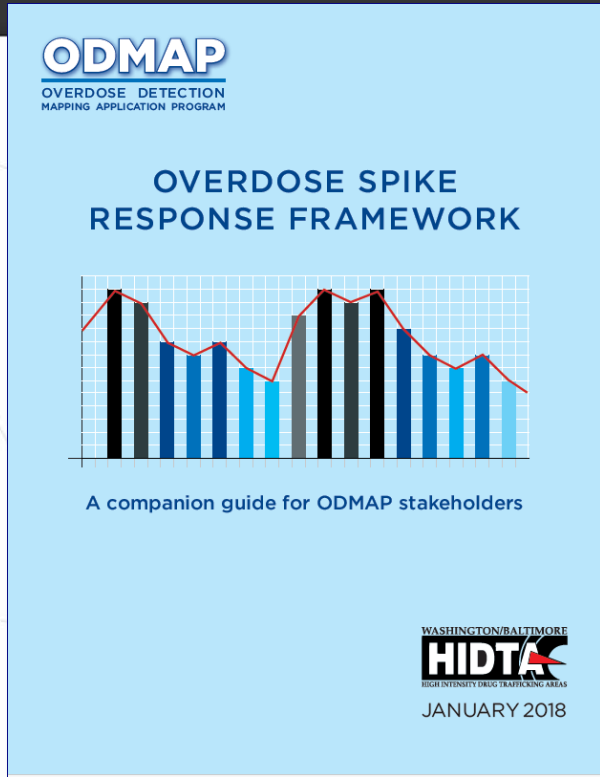


# Spike Alert Response

- Agencies create a tailored spike response program to ensure there is a quick response to increases or spikes in overdoses
- Include public health, law enforcement, fire and EMS, hospitals, medical examiners, etc.
- Set up spikes alerts for any threshold on ODMAP, so agencies can be alerted based on their agency's prevention/response program



# Spike Alert Response



CONTENTS	
Introduction .....	1
ODMAP and HIPAA .....	5
Local Health Departments .....	6
State Health Departments .....	10
First Responders (Fire, EMS, Law Enforcement) .....	12
Law Enforcement Leadership .....	13
Forensic Laboratory/ Coroner's Offices/Medical Examiner's Offices .....	15
Emergency Management Department .....	16
Hospital Emergency Departments .....	17
Peer Recovery Specialists .....	18
Community Groups .....	20
Treatment Facilities .....	21
Parole/Probation Officers .....	22
Correctional Facilities .....	23
Social Services and Schools .....	24
Media .....	25
Appendix: Acknowledgements .....	27

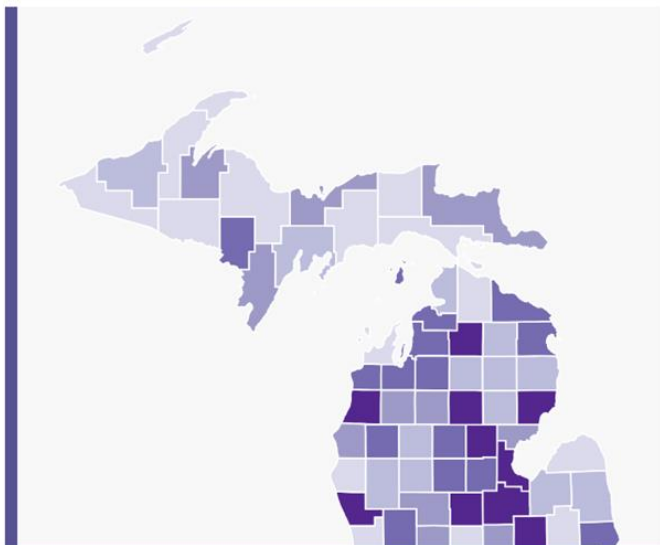
# ODMAP Demo



## Welcome to the Michigan System for Opioid Overdose Surveillance

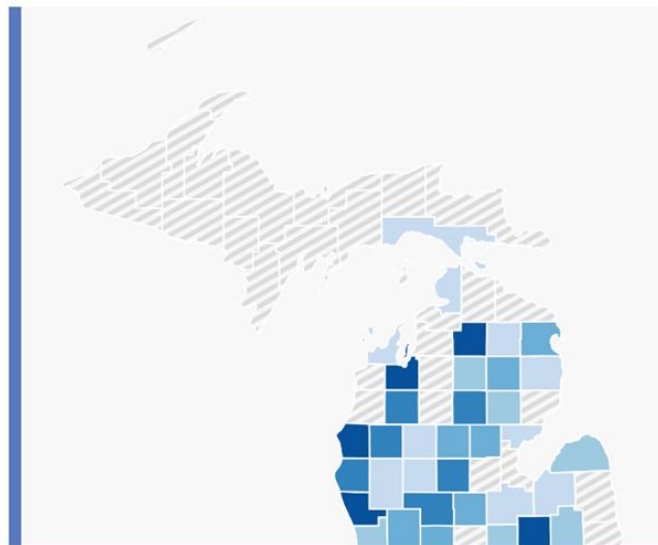
**9,476**

EMS naloxone administrations  
Jan 1, 2023 - Sep 20, 2023



**1,606**

Suspected fatal overdoses\*  
Jan 1, 2023 - Sep 20, 2023



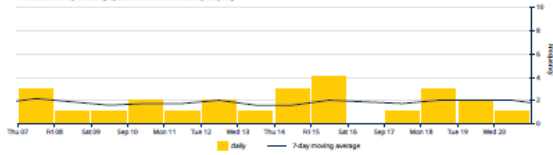
## Kent County EMS Naloxone Administrations Sep 7, 2023 to Sep 20, 2023



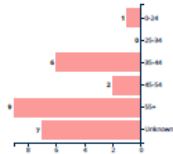
**25**  
total  
**3**  
unmappable  
incidents

\* All locations on the map are approximate  
\*\* Some locations are based on mailing addresses, which may not correspond with actual street frontages  
\*\*\* Some locations may be unrecognizable due to incomplete location information  
\*\*\*\* All locations on the map are unendingly updated whenever 100 or more 911 requests are processed

© Mapbox © OpenStreetMap  
Data Source: Michigan EMS Information System (MI-EMIS)



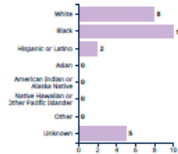
### Age



### Gender



### Race



### Frequency per City

City	Incidents	Percent
Grand Rapids	16	64.0%
Kentwood	4	16.0%
Caledonia	1	4.0%
Cedar Springs	1	4.0%
Cornstock Park	1	4.0%
Sparta	1	4.0%
Wyoming	1	4.0%

### Frequency per Zip Code

Zip Code	Incidents	Percent
49548	8	32.0%
49503	4	16.0%
49508	3	12.0%
49507	2	8.0%
49512	2	8.0%
49316	1	4.0%
49319	1	4.0%
49321	1	4.0%
49345	1	4.0%
49505	1	4.0%
49509	1	4.0%

Emily Godfrey  
Public Health Analyst (PHA)  
CDC Foundation  
616-617-4147  
godfreye@michigan.gov



odmap.org



Bob Kerr  
Drug Intelligence Officer (DIO)  
Michigan HIDTA  
734-777-0843  
rkerr@mi.hidta.net



<https://injurycenter.umich.edu/opioid-overdose/opioid-surveillance/>

