



2024

MICHIGAN COUNTIES

LEGISLATIVE CONFERENCE

Lansing Center | DoubleTree Hotel | April 29 - May 1, 2024

OFFICIAL PROGRAM

MAC
MICHIGAN ASSOCIATION OF COUNTIES



MICHIGAN COUNTY
MEDICAL CARE
FACILITIES
COUNCIL

Our Mission Sets Us Apart

► Agenda at a Glance

MONDAY | APRIL 29, 2024

TIME	SESSION	ROOM
12 p.m.-5 p.m.	Registration Desk Open DoubleTree	Second Floor
1 p.m.-3 p.m.	MCMCFC SESSION #1: Bureau of Survey and Certification Regulatory Updates - Jennifer Belden & David Donahue Michigan Department of LARA, Bureau of Survey and Certification DoubleTree	Capitol IV
2 p.m.-3 p.m.	MAC SESSION #1: Navigating Health Care Cost Trends: Strategies for Michigan Counties Chadd Hodkinson Gallagher - PREMIER PARTNER SESSION - GALLAGHER DoubleTree	Capitol I
2 p.m.-3 p.m.	MAC SESSION #2: Empowering Michigan Families: MiLEAP's Child Care Initiatives Lisa Brewer-Walraven Michigan Department of Lifelong Education, Advancement and Potential, Office of Early Childhood Education DoubleTree	Capitol II
2 p.m.-3 p.m.	MAC SESSION #3: Historic Federal Broadband Infrastructure and Affordability Funding: Latest Updates and County Action Items Seamus Dowdall NACo DoubleTree	Capitol III
3 p.m.-5 p.m.	Exhibitor Set-up Lansing Center	Banquet Rooms 1-8
2:45 p.m.-3 p.m.	MAC Board Executive Committee DoubleTree	Boardroom
3 p.m.-4 p.m.	MAC Board of Directors Meeting DoubleTree	Michigan II-III
3:30 p.m.-5 p.m.	MCMCFC SESSION #2: Regulatory Updates & Hot Topics / Med Aides / CNAOnline Vickie Burlew Lebenbom & Rothman Consulting DoubleTree	Capitol IV
4 p.m.-5:30 p.m.	Welcome Reception DoubleTree	Capitol Ballroom Pre-Function
	Dinner on own	

TUESDAY | APRIL 30, 2024

TIME	SESSION	ROOM
7:45 a.m.-9 a.m.	Registration Desk Opens & Breakfast Lansing Center	Banquet Rooms 1-8
9 a.m.-10 a.m.	Opening Plenary Lansing Center - Remarks from NACo President Mary Jo McGuire MAC Legislative Update / County Advocate Awards Lansing Center	Banquet Rooms 1-8
10 a.m.-10:45 a.m.	Networking with Exhibitors Lansing Center	Banquet Rooms 1-8
10:15 a.m.-11:45 a.m.	MCMCFC SESSION #3: Labor and Employment Update Grant Pecor Barnes & Thornburg LLP Lansing Center	Meeting Rooms 203/204
10:45 a.m.-11:45 a.m.	MAC SESSION #4: A Commissioner's Guide to Public Behavioral Health Richard Carpenter Rehmann - PREMIER PARTNER SESSION - REHMANN Lansing Center	Meeting Rooms 101/102
10:45 a.m.-11:45 a.m.	MAC SESSION #5: Deer Management: Challenges and Opportunities Shannon Lott Michigan Department of Natural Resources Lansing Center	Meeting Rooms 103/104
10:45 a.m.-11:45 a.m.	MAC SESSION #6: Make it in Michigan: MEDC Resources for Business and Communities Susan Proctor Michigan Economic Development Corp. Lansing Center	Meeting Room 201
12 p.m.-1:15 p.m.	Lunch with Plenary Lansing Center - Keynote Address, "Washington, Lincoln, Roosevelt, Churchill: A Strategic Approach to Leading in Times of Crisis and Change" Dr. Peter Cressy Washington Leadership Institute Lansing Center	Banquet Rooms 1-8
1:15 p.m.-2 p.m.	Networking with Exhibitors Lansing Center	Banquet Rooms 1-8
1:30 p.m.-2:30 p.m.	MCMCFC SESSION #4: Meetings Matter: Maximizing the Benefits of In-person and Virtual Meetings Renee Beniak MCMCFC Lansing Center	Meeting Rooms 203/204

TUESDAY | APRIL 30, 2024

TIME	SESSION	ROOM
2 p.m.-3 p.m.	MAC SESSION #7: Maximizing Your County's Retirement Plans Ken Kelbel and Eric Glinesky Nationwide Retirement Solutions - PREMIER PARTNER SESSION - NATIONWIDE Lansing Center	Meeting Rooms 101/102
2 p.m.-3 p.m.	MAC SESSION #8: What the New Renewable Energy Siting Legislation Means for Michigan Counties Sarah Mills University of Michigan, Center for Empowering Communities Lansing Center	Meeting Rooms 103/104
2 p.m.-3 p.m.	MAC SESSION #9: Empowering Communities with Data: Using 211 and United Way Data to Improve Well-Being in your County Kaitlynn Lamie and Sarah Kile Michigan Association of United Ways Lansing Center	Meeting Room 201
2:45 p.m.-4:30 p.m.	MCMCFC SESSION #5: How to Set Legislative and Advocacy Priorities and Engage with Lawmakers Don Haney MCMCFC Lansing Center	Meeting Rooms 203/204 State Capitol
4:30 p.m.-6 p.m.	Legislative Reception DoubleTree	Ballroom
	Dinner on own	
8 p.m.-11 p.m.	President's Hospitality Suite DoubleTree	Hotel Room 1128

WEDNESDAY | MAY 1, 2024

TIME	SESSION	ROOM
7:30 a.m.	Registration Desk Opens Lansing Center	Main Hall
7:30 a.m.-8:45 a.m.	Breakfast Lansing Center	Banquet Rooms 1-8
8 a.m.-9:30 a.m.	MCMCFC Board Meeting Lansing Center	Meeting Rooms 203/204
8:45 a.m.-9:45 a.m.	Plenary Lansing Center - Legislative Panel - Sen. Aric Nesbitt, Sen. Jeremy Moss, Rep. Graham Filler, Rep. John Fitzgerald Moderator: Kyle Melinn, MIRS News Service Lansing Center	Banquet Rooms 1-8
9:45 a.m.-10:45 a.m.	MAC SESSION #10: Building a Risk Management Plan John O'Connor and Sarah Kline Acrisure - PREMIER PARTNER SESSION - ACRISURE Lansing Center	Meeting Rooms 101/102
9:45 a.m.-10:45 a.m.	MAC SESSION #11: How to Talk about Michigan State-level Transportation Funding with Friends (and Enemies) Ron Davis HNTB - PM/CM Group Lansing Center	Meeting Rooms 103/104
9:45 a.m.-10:45 a.m.	MAC SESSION #12: Opioid Settlements: Lessons Learned and Next Steps Amy Dolinky MAC Lansing Center	Meeting Room 201
9:45 a.m.-10:45 a.m.	MCMCFC SESSION #6: Documentation Do's and Definitely Do Not's! Jeff Segal Warner Norcross + Judd LLP Lansing Center	Meeting Rooms 203/204
10:45 a.m.-11 a.m.	Boxed Lunch Pick-up Lansing Center	Various



wifi

LANSING CENTER

User name: MAC
Password: legislative (all lowercase)

DOUBLETREE

Network: Hilton Honors
Password: landt (all lowercase)

► Welcome!



MAC PRESIDENT
Jim Storey

As you know, County Commissioners are entrusted with leading and funding county government. The onset of four-year county commissioner terms in eight short months emphasizes the importance of staying on top of the opportunities and threats that face each of our counties.

The 2024 Legislative Conference has been arranged to help you navigate current issues that confront Michigan counties. It also allows you to look over the horizon and into Michigan's future and plan accordingly.

Upon leaving the conference, hopefully you will be better informed, gaining insight from both formal presentations and networking with fellow commissioners from across our great state.

Personally, I also hope the conference gives each of us, renewed energy and the tools to educate our state legislators and administration members on the need to treat local government as a crucial and cost-effective partner. As the governmental bodies closest to the residents we serve, counties are best equipped to deliver services when and where needed.

Enjoy the conference, please visit with the sponsors who make these MAC conferences possible, and if you get a chance, say hello along the way.

Thank you for spending your time and effort to lead your county. Thank you as well for participating in this conference.

Cheers.

-Jim Storey, MAC Board president and commissioner, Allegan County



MCMCFC PRESIDENT
Shana Espinoza

On behalf of the MCMCFC Board, I am pleased to welcome you to the 2024 Legislative Conference. Unity is strength, and we use events like this to gather, share ideas and bring the latest information to our group of 34 county-owned nursing homes. This year's event will incorporate many valuable educational opportunities, including meeting Jennie Beldon and David Donahue with the state's Bureau of Survey and Certification.

As a legislative event, one area of focus is advocacy. We will be taking a first-ever tour of the State Capitol and talking legislative priorities, advocacy, meeting and engaging with your state senators and representatives and move to and from the Capitol. We are thrilled to have you with us this if this is your first legislative conference. We do remarkable things together!

-Shana Espinoza, MCMCFC Board president and administrator, Pleasant View Medical Care Facility (Shiawassee County)

► Plenary Speakers

KEYNOTE: WASHINGTON, LINCOLN, ROOSEVELT, CHURCHILL: A STRATEGIC APPROACH TO LEADING IN TIMES OF CRISIS AND CHANGE



Cressy

has been the director of executive leadership programs at the Washington Leadership Institute for the past eight years. He served 28 years in the U.S. Navy in command and senior staff positions, followed by eight years in higher education as a college president and university chancellor, where he was also a tenured professor of management. He later served 16 years as the president and CEO of the Distilled Spirits Council trade association.

Peter Cressy, Ed.D., RADM (Ret.), has



McGuire

Commissioner Mary Jo McGuire became NACo President on July 24, 2023. She has been a Ramsey County Commissioner in Minnesota since 2012. Prior to the county board, Commissioner McGuire served 16 years in the Minnesota State Legislature, serving in both the House and Senate. In her own county, Commissioner McGuire chairs the county's Legislative Committee and Active Living Ramsey Communities, and serves on the Suburban Ramsey Family Collaborative, Extension Committee and Recycling and Energy Board. She has a bachelor's degree from the College of St. Catherine, a law degree from Hamline University School of Law and a master's in public administration from the Harvard University Kennedy School of Government. She is an adjunct professor in the Master's of Organizational Leadership Department at St. Catherine University, and was a guest lecturer at West Point Military Academy.

Mary Jo McGuire, president, National Association of Counties

Commissioner Mary Jo McGuire became NACo President on July 24, 2023. She has been a Ramsey County Commissioner in Minnesota since 2012. Prior to the county board, Commissioner McGuire served 16 years in the Minnesota State



Bosworth

Deena Bosworth joined MAC in 2011 and became director of governmental affairs in December 2013. Bosworth previously served as director of legislative relations for the Michigan Attorney General's Office, as assistant county administrator with the Charlotte County Board of Commissioners in Florida and as legislative director and senior policy adviser for the Michigan House Republican Caucus. She has a bachelor's degree in anthropology from Western Michigan University.

Deena Bosworth, governmental affairs director, MAC

Deena Bosworth joined MAC in 2011 and became director of governmental affairs in December 2013. Bosworth previously served as director of legislative relations for the Michigan Attorney General's Office, as assistant county administrator

LEGISLATIVE PANEL



Nesbitt

In 2010, Nesbitt was elected to represent Van Buren County and part of Allegan County in the Michigan House of Representatives. He served three terms in the state House, including as House majority floor leader and chair of the House Committee on Energy and Technology. In 2018, Nesbitt was first elected to the state Senate. He now represents the 20th District, which includes portions of Berrien, Van Buren, Allegan and Kent counties.

Senate Minority Leader Aric Nesbitt:

In 2010, Nesbitt was elected to represent Van Buren County and part of Allegan County in the Michigan House of Representatives. He served three terms in the state House, including as House majority floor leader and chair of the House Committee on Energy and Technology. In 2018, Nesbitt was first elected to the state Senate. He now represents the 20th District, which includes portions of Berrien, Van Buren, Allegan and Kent counties.



Moss

his bachelor's degree in journalism from Michigan State University. He was honored by MAC in 2023 with its County Advocate Award.

Sen. Jeremy Moss: Moss holds the distinction of having been the youngest-ever elected official on the Southfield City Council (2011) and has not let up on public service since. He served in the Michigan House of Representatives, including as the Democratic Caucus whip. He became the assistant Democratic leader in his first term in the Michigan Senate. Moss earned

his bachelor's degree in journalism from Michigan State University. He was honored by MAC in 2023 with its County Advocate Award.



Fitzgerald

Rep. John Fitzgerald: Fitzgerald is serving his first term representing the 83rd House District, including the city of Wyoming and other Kent County communities. A graduate of Michigan State University, he chairs the House Local Government Committee.



Filler

Filler has a bachelor's degree from Miami University in Ohio and a law degree from the University of Detroit Mercy.

Rep. Graham Filler: Filler was first elected to serve in the Michigan House of Representatives in November 2018. He represents the 93rd House District, which encompasses portions of Clinton, Gratiot, Ionia, Montcalm and Saginaw counties. He serves as the Republican vice chair on the House Criminal Justice Committee.

Filler has a bachelor's degree from Miami University in Ohio and a law degree from the University of Detroit Mercy.

▶ MAC Corporate Partners

MAC extends its appreciation to its 2024 Corporate Partners for their generous support of MAC events and activities.

PREMIER



EXECUTIVE



ASSOCIATE

Comcast
Delta Dental
DTE Energy

Guidehouse
ITC
MMRMA



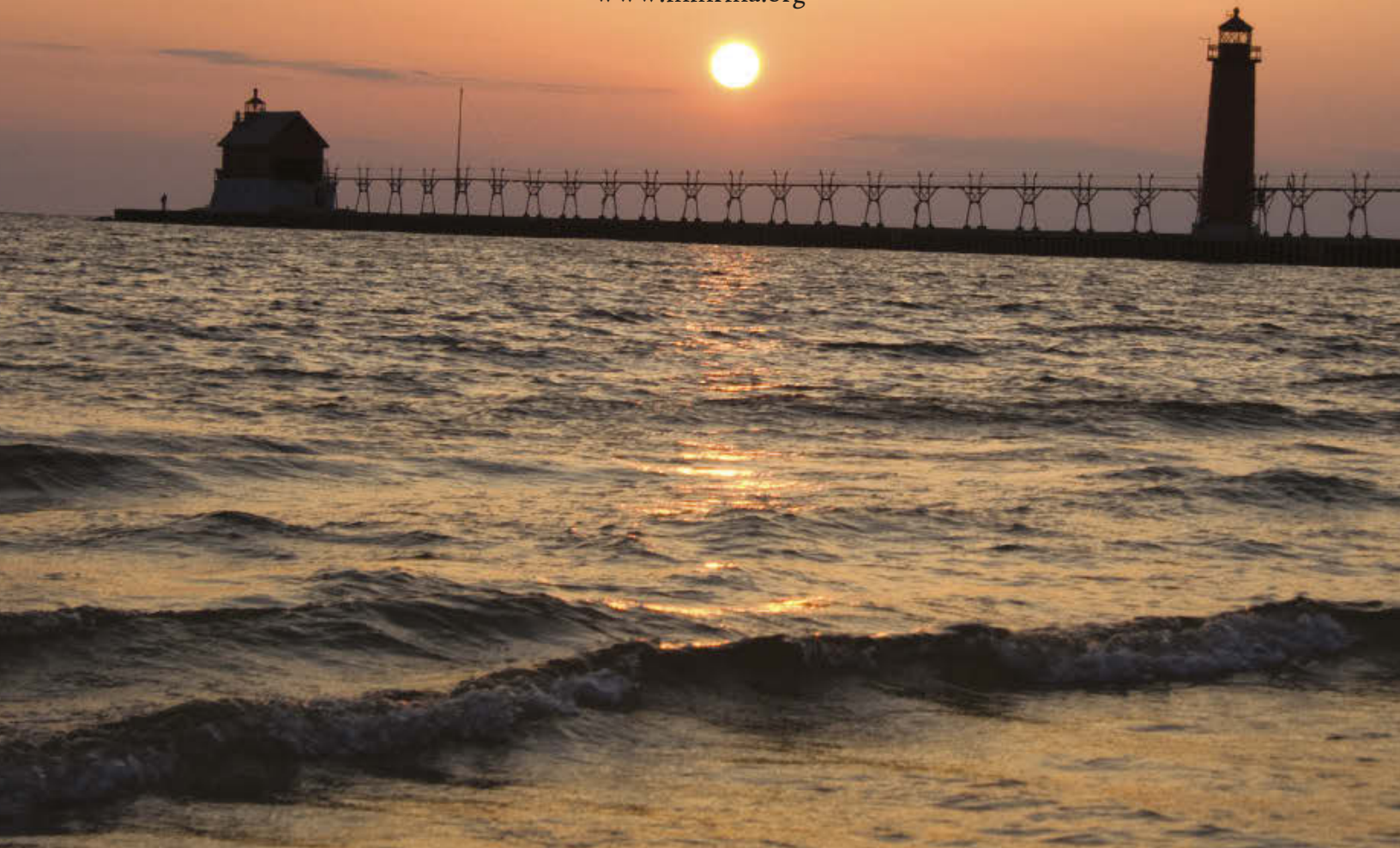
RISK

MICHIGAN MUNICIPAL
RISK MANAGEMENT
A U T H O R I T Y

MMRMA & MAC: Partners in Excellence

Providing comprehensive, industry leading coverage
and superior risk management services
to Michigan public entities since 1980

Contact Tim McClorey
800-243-1324
www.mmrma.org



AN EXTRAORDINARY
ADVANTAGE



ACRISURE®

A combination of human
and artificial intelligence
driven solutions in
insurance, reinsurance,
cyber services, and more.

www.acrisure.com/greatlakes



Southwest Michigan
BEHAVIORAL HEALTH

SWMBH, in partnership with the Community Mental Health agencies and local providers, provides mental health services to adults with severe and persistent mental illness, children with severe emotional disturbance, individuals with intellectual/developmental disabilities, and individuals with substance use disorders.

Servicing 8 Michigan Counties:

- **Barry County**
- **Berrien County**
- **Branch County**
- **Calhoun County**
- **Cass County**
- **Kalamazoo County**
- **St. Joseph County**
- **Van Buren County**

► Special Events

O’Neal, VanderWall to receive County Advocate Awards



O’Neal

State Reps. Amos O’Neal (D-Saginaw) and Curt VanderWall (R-Mason) will be honored during the April 30 morning Plenary Session with County Advocate Awards for their work in 2023.

Rep. O’Neal has been chosen for championing the Revenue Sharing Trust Fund legislation, which is the foundation for more dependable funding for counties. He is thoughtful in his approach to legislating and is a dedicated public servant.

O’Neal is serving his second term representing the 94th House District. A long-time activist for his community, he served on the Saginaw County Board of Commissioners for four years and spent

13 years on the Saginaw City Council. He has a degree in business administration from Northwood University.

Rep. VanderWall has been chosen due to his commitment to preserving local control and championing legislation that helps counties provide services to the best of their abilities. He is active with county leadership in his district and is honest and transparent in his work.

VanderWall was first elected to the Michigan House of Representatives in November 2016. He represented the 101st District, before being elected to the State Senate and representing 12 counties across Northern Michigan from 2018-2022. Before being elected to the Michigan House, VanderWall served as commissioner and chairman for the Mason County Board of Commissioners.

Receptions will cap first two days of conference

Conference attendees will have full access to receptions at the end of the conference day on Monday, April 29 and Tuesday, April 30. Each reception will be held in the second-floor ballroom area of the DoubleTree Hotel. Complimentary beverages and appetizers. MAC appreciates the support of its Corporate Partners and conference sponsors to put on these events.

President’s Hospitality Suite

MAC Board President Jim Storey welcomes his colleagues to his suite at the DoubleTree Hotel (Room 1128) on Tuesday night to catch up after a busy day of conference sessions. Complimentary snacks and beverages.

Exhibitor Bingo

Attendees could win one of two \$250 cash prizes. All attendees will be provided with an exhibitor bingo card. A completed card enters you in a MAC raffle for the prizes. The prizes will be announced at the end of the Wednesday morning Plenary Session on May 1. **You must be present to win.** For more information on exhibitor bingo, visit the Conference Registration Desk. **Cards must be submitted by 2 p.m. on Tuesday, April 30.**



State of Michigan may have money for you

The Michigan Department of Treasury’s Unclaimed Property unit will have a table in the Registration Area on Monday, April 29 at the DoubleTree Hotel to field inquiries about money, securities and safe deposit box contents that have been abandoned by their owners. These properties are turned over to our office and we remain their custodian until we can return them to their owners. Annually, our office returns well over \$100 million dollars to claimants; there is no fee for this public service offered by the state.

FOLLOW MAC ON SOCIAL MEDIA!



facebook.com/Mlcounties



twitter.com/Mlcounties



instagram.com/micounties

WHERE TO EAT IN THE DOWNTOWN DISTRICT

ASIAN/MIDDLE EASTERN

- 1 AnQi Sushi Express**
111 E. Allegan St.,
Lansing, 48933
(517) 485-9688
anquisushi.com
- 2 Sultan's Express**
305 S. Washington Sq.,
Lansing, 48933
(517) 484-2850
sultansexpress.com
- 3 Thai Village Restaurant**
400 S. Washington Sq.,
Lansing, 48933
(517) 371-1000
thai-village-lansingmi.com
- 10 People's Kitchen Lounge & Bistro**
2722 E. Michigan Ave.,
Lansing, 48912
(517) 507-5730
entpeoples.com
- 11 Sidecar Slider Bar**
500 E. Michigan Ave. Ste 100,
Lansing, 48912
(517) 580-8776
sidecarsliderbar.com
- 12 Sleepwalker Spirits and Ale**
1101 S. Washington Ave.,
Lansing, 48910
drinksleepwalker.com
- 13 Tavern + Tap**
111 E. Michigan Ave
Lansing, 48933
tavernandtaps.com
- 14 The Soup Spoon Café**
1419 E. Michigan Ave.,
Lansing, 48912
(517) 316-2377
soupspooncafe.com
- 19 The Comfort Zone Cigar Lounge & Bistro**
600 S Pennsylvania Ave.,
Lansing, 48912
thecomfortzone.com
- 20 Blue Owl Coffee**
1149 S. Washington Ave.,
Lansing, 48910
blueowlcoffee.net
- 21 GoodFellas Bagel Deli**
600 E. Michigan Ave., Capital City
Market, Lansing, 48912
(517) 580-8611
goodfellasbageldeli.com

BAR & GRILL

- 4 Capitol City Grille**
111 N. Grand Ave., DoubleTree by
Hilton Lansing, Lansing, 48933
(517) 267-3459
hilton.com/en/hotels/landtd-doubletree-lansing
- 5 Bobcat Bonnie's**
637 E. Michigan Ave.,
Lansing, 48912
bobcatbonnies.com
- 6 Harry's Place**
404 N. Verlinden Ave.,
Lansing, 48915
(517) 484-9661
restaurantwebx.com/harrysplace
- 7 Lansing Brewing Company**
518 E. Shiawassee St.,
Lansing, 48912
(517) 371-2600
lansingbrewingcompany.com
- 8 Midtown Brewing Company**
402 S. Washington Sq.,
Lansing, 48933
(517) 977-1349
midtownbrewingco.com
- 9 Nuthouse Sports Grill**
420 E. Michigan Ave.,
Lansing, 48933
(517) 484-NUTS (6687)
nuthousesportsgrill.com
- 15 Saddleback BBQ**
1147 S. Washington Ave.,
Lansing, 48910
(517) 253-7556
saddlebackbbq.com
- 22 Eastside Fish Fry & Grill**
2417 E. Kalamazoo St.,
Lansing, 48912
(517) 993-5988
eastsidefishfry.com
- 23 Jimmy John's**
134 S. Washington Sq.,
Lansing, 48933
(517) 485-3300
jimmyjohns.com
- 24 Lansing Shuffie**
325 River front Dr.
Lansing, 48912
lansingshuffie.com
- 25 Tatse Restaurant**
221 S. Washington Sq.,
Lansing, 48933
(517) 977-0842
tatsrestaurant.com
- 26 Sweet Encounter Bakery Café**
300 Washington Sq, Knapp Center,
Lansing, 48912
(517) 798-6514
sweetencounterbakery.com

FAST FOOD/QUICK CASUAL

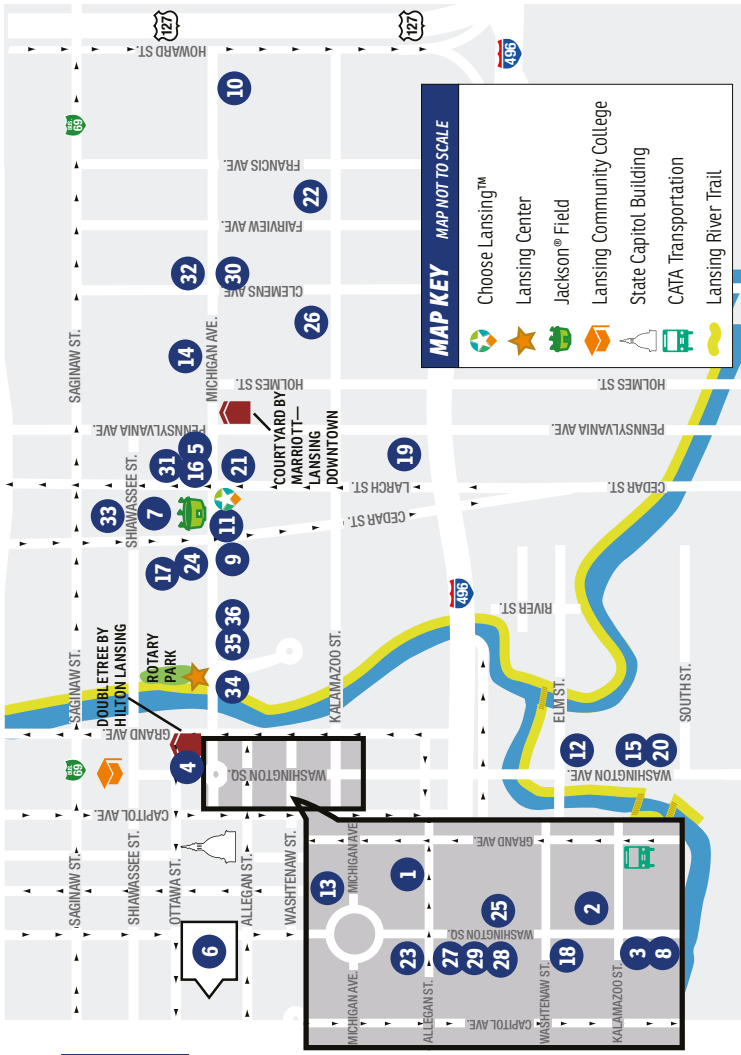
- 27 Veg Head**
208 S. Washington Sq.
Lansing, 48933
veghead.restaurant
- 28 Zoup!**
214 S. Washington Sq.,
Lansing, 48933
(517) 367-7400
zoup.com
- 29 EnVie**
210 S. Washington Sq.,
Lansing, 48933
(517) 318-6135
envies17.com
- 30 Pablo's Eastside**
2010 Michigan Ave
Lansing, 48912
pablosrestaurants.com
- 31 American Fifth Spirits**
112 N. Larch St., Lansing, 48912
(517) 999-2631
americanfifthspirits.com
- 32 Green Door Blues Bar & Grill**
2005 E. Michigan Ave.,
Lansing, 48912
(517) 482-6376
greendoorlive.com
- 33 Michigrain Distillery**
523 E. Shiawassee St.,
Lansing, 48912
(517) 220-0560
michigrain.net
- 34 The Exchange of Lansing**
314 E. Michigan Ave.,
Lansing, 48933
(517) 319-4500
lansingexchange.com

FINE DINING

- 35 Tin Can Bar/Big Deck Bar**
414 E. Michigan Ave.,
Lansing, 48912
(517) 708-3441
tincanbar.com
- 36 Tin Can Taproom**
410 E. Michigan Ave.,
Lansing, 48912
(517) 708-3441
tincanbar.com

NIGHTLIFE & ENTERTAINMENT

- 7 Lansing Brewing Company**
518 E. Shiawassee St.,
Lansing, 48912
(517) 371-2600
lansingbrewingcompany.com
- 8 Midtown Brewing Company**
402 S. Washington Sq.,
Lansing, 48933
(517) 977-1349
midtownbrewingco.com
- 9 Nuthouse Sports Grill**
420 E. Michigan Ave.,
Lansing, 48933
(517) 484-NUTS (6687)
nuthousesportsgrill.com
- 10 Choose Lansing™**
Lansing Center
- 11 Jackson® Field**
Lansing Community College
- 12 State Capitol Building**
- 13 CATA Transportation**
- 14 Lansing River Trail**
- 15 DoubleTree by Hilton Lansing**
- 16 7**
- 17 Rotary Park**
- 18 3**
- 19 Courtyard by Marriott Lansing Downtown**
- 20 20**
- 21 21**
- 22 22**
- 23 23**
- 24 24**
- 25 25**
- 26 26**
- 27 27**
- 28 28**
- 29 29**
- 30 30**
- 31 31**
- 32 32**
- 33 33**
- 34 34**
- 35 35**
- 36 36**



▶ County Commissioner Academy



CCA GRADUATES TO BE HONORED

MAC will honor its graduating class of the County Commissioner Academy during the conference.

THIS YEAR'S HONOREES ARE:

ADVANCED

- James Storey, Allegan
- Gale Dugan, Allegan
- Ken Mitchell, Clinton
- Jeanne Wright, Eaton
- Neil Ahrens, Emmet
- James Moreno, Isabella
- Stan Ponstein, Kent
- Richard Schmidt, Manistee
- William Miller, Oakland
- Dennis Krafft, Saginaw
- Mike Chappell, Van Buren
- Kurt Doroh, Van Buren
- Melissa Daub, Wayne
- Gary Taylor, Wexford
- Brian Potter, Wexford
- Julie Theobald, Wexford

CERTIFIED

- Scott Beltman, Allegan
- Kathy Niemiec, Bay
- Dennis Poirier, Bay
- Karen Cunningham, Benzie
- Chokwe Pitchford, Berrien
- Robert Harrison, Berrien
- Jon Houtz, Branch
- Joyce Locke, Cass
- David Hoefling, Clare
- Brian Gutowski, Emmet
- Michelle Davis, Genesee
- Scott Sieffert, Grand Traverse
- Tom Tikkanen, Houghton
- Irene Cahill, Ingham
- Monica Schafer, Ingham
- Jack Shattuck, Ionia
- Terence Frewen, Ionia
- John Taylor, Kalamazoo
- Carol Hennessy, Kent
- Monica Sparks, Kent
- Walter Bujak, Kent
- Clyde Welford, Lake
- Gwenne Allgaier, Leelanau
- Terry Collins, Lenawee
- Doug Helzerman, Livingston
- Michelle Nard, Macomb
- Don VanSyckel, Macomb
- Sarah Lucido, Macomb
- Antoinette Wallace, Macomb
- Mai Xiong, Macomb
- Linda Howard, Mecosta
- Tom O'Neil, Mecosta
- Chris Jane, Mecosta
- Raymond Steinke, Mecosta
- Jerrilynn Strong, Mecosta
- Alaynah Smith, Midland
- Paul Mellema, Newaygo
- Ajay Raman, Oakland
- Gwen Markham, Oakland
- Chuck Varner, Oscoda
- Lucy Ebel, Ottawa
- Allison Miedma, Ottawa
- Joe Moss, Ottawa
- Sylvia Rhodea, Ottawa
- Tracey Slodowski, Saginaw
- Thomas Emery, Shiawassee
- Gail Patterson-Gladney, Van Buren
- Paul Shincariol, Van Buren
- Richard Godfrey, Van Buren
- Caroline Sanders, Washtenaw

A young boy with dark hair, wearing a bright yellow raincoat and blue jeans, is captured in the middle of splashing through a puddle. He is looking down at the water with a focused expression. The background is a blurred outdoor setting with green foliage and a paved surface. The overall mood is one of playful energy and resilience.

CHANGE IS

FOR THEM

BECOME A **FORCE OF CHANGE**

We're committed to net zero operations by 2050, including dramatic reductions in methane emissions from natural gas, because future generations are counting on us to do what's right – not just required.

Consumers Energy
Count on Us®

[CONSUMERSENERGY.COM/CHANGE](https://www.consumersenergy.com/change)

► Conference Chronology

MONDAY | APRIL 29, 2024

12 p.m.-5 p.m.

REGISTRATION DESK OPEN

DoubleTree | Second Floor

1 p.m.-3 p.m.

MCMCFC SESSION #1: BUREAU OF SURVEY AND CERTIFICATION REGULATORY UPDATES

Jennifer Belden & David Donahue | Michigan Department of LARA, Bureau of Survey and Certification

DoubleTree | Capitol IV

Jennifer Belden, bureau director of BSC and David Donahue, director of the Long Term Care Division, will discuss changes in the bureau's approach to regulatory enforcement through an increased focus on education and consultation. They will also share updates on quality initiatives and projects within the bureau as well as efforts under way to improve CMP fund disbursements to LTC facilities.

2 p.m.-3 p.m.

MAC SESSION #1: NAVIGATING HEALTH CARE COST TRENDS: STRATEGIES FOR MICHIGAN COUNTIES

Chadd Hodkinson | Gallagher

PREMIER PARTNER SESSION - GALLAGHER

DoubleTree | Capitol I

Health care costs continue to create downward pressure on Michigan county balance sheets. This session will explore the latest trends in the health insurance market and how these trends are likely to impact Michigan counties. Attendees will learn about strategies Michigan counties and other Michigan public sector employers are using to contain health care costs while ensuring high-quality benefit offerings for their workforces. Key learning objectives include:

- Understanding cost drivers in the health insurance space
- Exploring the latest in pharmaceutical trends and what they mean for employer health plans
- Learning approaches to understand your county's current healthcare spend and options to reduce that spend
- Reviewing cost containment strategies being used by colleague organizations around the state
- Beyond health insurance, up to the minute data regarding key metrics for effectively retaining, engaging and attracting top talent

2 p.m.-3 p.m.

MAC SESSION #2: EMPOWERING MICHIGAN FAMILIES: MILEAP'S CHILD CARE INITIATIVES

Lisa Brewer-Walraven | Michigan Department of Lifelong Education, Advancement and Potential, Office of Early Childhood Education

DoubleTree | Capitol II

MiLEAP will discuss the status of child care in Michigan, including initiatives in place to support increasing access for children and families. MiLEAP is also interested in hearing from you in regards to how child care access impacts the communities you represent.

2 p.m.-3 p.m.

MAC SESSION #3: HISTORIC FEDERAL BROADBAND INFRASTRUCTURE AND AFFORDABILITY FUNDING: LATEST UPDATES AND COUNTY ACTION ITEMS

Seamus Dowdall | NACo

DoubleTree | Capitol III

Hear from the National Association of Counties (NACo) on the latest developments pertaining to federal broadband infrastructure and digital connectivity grant programs, such as the Broadband Equity Access and Deployment (BEAD) program, as well as an advocacy update on the Federal Communications Commission's Affordable Connectivity Program internet affordability programs. NACo will offer several county action items and next steps for how to continue advocating for high-speed internet availability in your county.

3 p.m.-5 p.m.

EXHIBITOR SET-UP

Lansing Center | Banquet Rooms 1-8

3:30 p.m.-5 p.m.

MCMCFC SESSION #2: REGULATORY UPDATES & HOT TOPICS / MED AIDES / CNA ONLINE

Vickie Burlew | Lebenbom & Rothman Consulting

DoubleTree | Capitol IV

Don't let the tide of change sweep you out to sea. Hear what is happening both at the state and federal regulators that affect your daily operations. Michigan is moving forward to alleviate nursing staffing issues. We discuss progress on Medication Aides since the legislation passed and the CNA Online Program for training. Michigan has consultants now for Infection Control, Pressure Injuries and falls. CMS is providing us with free consultation from Superior QIO on Infection Control and Emergency Preparedness. Learn to tap into these resources.



CoPro+ is a shared services solution program that saves time and money by taking a strategic and integrated approach to procurement. Created in response to requests for collaborative procurement support for counties, local governments and schools by offering the following:

- + Expert procurement analysis and organizational support in every phase of the procurement process
- + Statewide cooperative that offers a variety of publicly bid and competitively priced contracts to choose from when fulfilling a service or product need
- + On-call procurement professional support 24/7 to your staff

Benefits

The + Makes the Difference

- + No user fees/no cost to participate
- + Free Strategic Procurement Assessment Report
- + Expert professionals with more than 150 years of public procurement experience
- + Dividends shared with CoPro+ members
- + Reduced workload for staff
- + Guaranteed savings
- + Quality commodity and service contracts

► Conference Chronology

2:45 p.m.-3 p.m.
MAC BOARD EXECUTIVE COMMITTEE
DoubleTree | Boardroom

3 p.m.-4 p.m.
MAC BOARD OF DIRECTORS MEETING
DoubleTree | Michigan II-III

The MAC Board of Directors will hold a regular meeting. MAC members may attend.

4 p.m.-5:30 p.m.
WELCOME RECEPTION
DoubleTree | Capitol Ballroom Pre-Function

Enjoy complimentary appetizers and beverages after the day's events.

DINNER ON OWN

TUESDAY | APRIL 30, 2024

7:45 a.m.-9 a.m.
REGISTRATION DESK OPENS & BREAKFAST
Lansing Center | Main Hall

9 a.m.-10 a.m.
OPENING PLENARY
Lansing Center | Banquet Rooms 1-8

REMARKS FROM NACO PRESIDENT MARY JO MCGUIRE
MAC LEGISLATIVE UPDATE / COUNTY ADVOCATE AWARDS
Lansing Center | Banquet Rooms 1-8

Mary Jo McGuire, president of the National Association of Counties (NACo), will discuss her "ForwardTogether" initiative.

MAC LEGISLATIVE UPDATE

Deena Bosworth | Michigan Association of Counties Director of Governmental Affairs | Deena Bosworth will review progress on MAC's 2024 legislative priorities in Lansing and how members can be more involved in MAC's advocacy work.

COUNTY ADVOCATE AWARDS

Deena Bosworth will present MAC's 2024 County Advocate Awards to Reps. Amos O'Neal (D-Saginaw) and Curt VanderWall (R-Mason).

10 a.m.-10:45 a.m.
NETWORKING WITH EXHIBITORS
Lansing Center | Banquet Rooms 1-8

10:15 a.m.-11:45 a.m.
MCMCFC SESSION #3: LABOR AND EMPLOYMENT UPDATE
Grant Pecor | Barnes & Thornburg LLP
Lansing Center | Rooms 203/204

The recent change in the composition of the Michigan Legislature and the decisions of federal and state courts brought about a litany of changes impacting public employers in the State. This presentation will provide an update on those developments and discuss strategies to navigate the legal issues involved.

10:45 a.m.-11:45 a.m.
MAC SESSION #4: A COMMISSIONER'S GUIDE TO PUBLIC BEHAVIORAL HEALTH
Richard Carpenter | Rehmann
PREMIER PARTNER SESSION - REHMANN
Lansing Center | Rooms 101/102

The Michigan public behavioral health system has changed significantly since the Mental Health Code was initially enacted in 1974. Community mental health (CMH) and substance use disorder (SUD) service programs — a critical component of county infrastructure — work hand in hand with law enforcement, health departments, and departments on aging, transportation, housing, and education, plus many other community services to ensure a continuum of care for our citizens.

Over the last 50 years, federal and state legislation, various policies, and the shifting needs of the public have reshaped a system that is now vastly different from the way state facilities and county departments once served this vulnerable population.

In this session, we will explore the major policy and funding changes that have transformed the system and examine future opportunities and challenges, including:

- Certified Community Behavioral Health Clinics (CCBHC)
- The Opioid Epidemic
- Jail Diversion/Jail Service



AJG.com | The Gallagher Way. Since 1927.

Gallagher Is a Proud Supporter of the Michigan Association of Counties

You serve the public, we serve you.

For more than 40 years, Gallagher's benefit consultants have ensured organizations like yours are remaining competitive without compromising the wellbeing of your most important asset — your people. Our passion is to provide customized insurance programs, benefits, and HR solutions tailored to your unique needs. We're here to work through every challenge to drive better outcomes and help you build the confidence to handle whatever comes next.

▶ Chadd Hodkinson
Senior Area Vice President
P: (517) 898 7752
E: chadd_hodkinson@ajg.com
www.AJG.com

▶ Jeff Nielson
Area Vice President
P: (248) 496 0912
E: jeff_nielson@ajg.com
www.AJG.com



Gallagher

Insurance | Risk Management | Consulting

► Conference Chronology

10:45 a.m.-11:45 a.m.

MAC SESSION #5: DEER MANAGEMENT: CHALLENGES AND OPPORTUNITIES

Shannon Lott | Michigan Department of Natural Resources
Lansing Center | Rooms 103/104

Management of Michigan's deer herd is essential to maximize its positive and minimize its negative effects on social, biological, ecological and economic values. In this session, we'll explore the present-day challenges and discuss opportunities to ensure the sustainability and healthy management of deer populations and their habitats across the state.

10:45 a.m.-11:45 a.m.

MAC SESSION #6: MAKE IT IN MICHIGAN: MEDC RESOURCES FOR BUSINESS AND COMMUNITIES

Susan Proctor | Michigan Economic Development Corp.
Lansing Center | Room 201

The presentation will provide an overview of the MEDC strategy, with an emphasis on resources for businesses and communities of all sizes and how to access them.

12 p.m.-1:15 p.m.

LUNCH WITH PLenary

LANSING CENTER - KEYNOTE ADDRESS, "WASHINGTON, LINCOLN, ROOSEVELT, CHURCHILL: A STRATEGIC APPROACH TO LEADING IN TIMES OF CRISIS AND CHANGE"

Dr. Peter Cressy | Washington Leadership Institute
Lansing Center | Banquet Rooms 1-8

Washington, Lincoln, Roosevelt, Churchill: A Strategic Approach to Leading in Times of Crisis and Change: Washington and these other great leaders manifested eight common characteristics in leading during times of crisis and change, ranging from visibility and communication to planning and collaboration. This popular session will explore examples of these traits during the times of crisis each of these outstanding leaders faced, which remain relevant today.

1:15 p.m.-2 p.m.

NETWORKING WITH EXHIBITORS

Lansing Center | Banquet Rooms 1-8

1:30 p.m.-2:30 p.m.

MCMCFC SESSION #4: MEETINGS MATTER: MAXIMIZING THE BENEFITS OF IN-PERSON AND VIRTUAL MEETINGS

Renee Beniak | Michigan County Medical Care Facilities Council
Lansing Center | Rooms 203/204

District meetings are one communication and quality enhancement method the association uses to support

MCMCFC's members in the sharing of best practices, improving quality and safety and providing relevant education on any topic for members at the district level. This session will focus on the meeting planning process, positive communication behaviors between members during the meeting that best facilitate the exchange of information and strategies for meeting effectiveness to make the best use of both in-person and virtual meeting time and leave members with a positive post-event experience.

2 p.m.-3 p.m.

MAC SESSION #7: MAXIMIZING YOUR COUNTY'S RETIREMENT PLANS

Ken Kelbel and Eric Glinsky | Nationwide Retirement Solutions
PREMIER PARTNER SESSION - NATIONWIDE
Lansing Center | Rooms 101/102

Retirement savers have growing concerns about their financial futures; they are looking to combat market fluctuations and are trying to make sure they don't outlive their savings. One way you can enhance the capabilities of your retirement plan is through auto features and qualified default investment alternatives, including a dynamic default capability. Partner with us to help provide protection with care: a suite of solutions to make it simpler to deliver better care for participants. Offer your plan participants new protected retirement solutions that offer Principal Protection & Guaranteed Lifetime Income.

2 p.m.-3 p.m.

MAC SESSION #8: WHAT THE NEW RENEWABLE ENERGY SITING LEGISLATION MEANS FOR MICHIGAN COUNTIES

Sarah Mills | University of Michigan, Center for EmPowering Communities
Lansing Center | Rooms 103/104

Significant changes to the permitting process for large-scale wind, solar and energy storage projects were enacted in last fall. The new law grants permitting authority to the Michigan Public Service Commission, unless local governments adopt 'compatible renewable energy ordinances'. To help counties prepare for the new law, which goes into effect in November 2024, this session will provide an overview on the knowns and unknowns and discuss implications for local policy.

2 p.m.-3 p.m.

MAC SESSION #9: EMPOWERING COMMUNITIES WITH DATA: USING 211 AND UNITED WAY DATA TO IMPROVE WELL-BEING IN YOUR COUNTY

Kaitlynn Lamie and Sarah Kile | Michigan Association of United Ways
Lansing Center | Room 201

This presentation explores the transformative power of data from 211 and United Way for Michigan Counties. By leveraging



Proud of our partnership. Proud of our values.

The National Association of Counties (NACo) and Nationwide® are unified in our mission to help county leaders find better retirement solutions for their employees. For **more than 40 years**, our partnership has achieved a lot:

More than
425,000
current participants

More than
\$24 billion
in assets

Nearly
3,000
participating
counties and county
jurisdictions

More than
1.5 million
employees and
retirees served

The Nationwide difference



BETTER PARTICIPANT
EXPERIENCES



ADMINISTRATIVE
SIMPLICITY



VALUES THAT TRANSLATE
INTO SERVICE



For more information, contact:

Nationwide Retirement Solutions and Nationwide Life Insurance Company (collectively “Nationwide”) have endorsement relationships with the National Association of Counties (NACo). More information about the endorsement relationships can be found online at nrsforu.com.

Nationwide and the Nationwide N and Eagle are service marks of Nationwide Mutual Insurance Company.
© 2022 Nationwide NRM-21963M3-NX (12/22)

► Conference Chronology

insights on community needs from 2-1-1 and the United Way ALICE project (Asset Limited, Income Constrained, Employed), we can navigate the challenges faced by individuals and families living on the financial edge and build innovative community-driven interventions. Join us as we demonstrate how 211 and United Way data can drive targeted support, inform resource allocation, and ultimately enhance the well-being of Michigan residents.

2:45 p.m.-4:30 p.m.

MCMCFC SESSION #5: HOW TO SET LEGISLATIVE AND ADVOCACY PRIORITIES AND ENGAGE WITH LAWMAKERS

Don Haney | Michigan County Medical Care Facilities Council

Lansing Center | Rooms 203/204 | State Capitol

We will tour the Michigan State Capitol and discuss the importance of getting to know your legislators and how to effectively communicate with them on legislative matters related to the long-term care and skilled nursing providers.

4:30 p.m.-6 p.m.

LEGISLATIVE RECEPTION

DoubleTree | Ballroom

Enjoy complimentary appetizers and beverages as you discuss the day's events with your fellow county leaders and Michigan legislators.

DINNER ON OWN

8 p.m.-11 p.m.

PRESIDENT'S HOSPITALITY SUITE

DoubleTree Hotel Room 1128

MAC President Jim Storey invites you to his suite for complimentary beverages and light snacks to conclude the day's activities.

WEDNESDAY | MAY 1, 2024

7:30 a.m.

REGISTRATION DESK OPENS

Lansing Center | Main Hall

7:30 a.m.-8:45 a.m.

BREAKFAST

Lansing Center | Banquet Rooms 1-8

8 a.m.-9:30 a.m.

MCMCFC BOARD MEETING

Lansing Center | Rooms 203/204

The MCMCFC Board will hold a regular meeting. All MCMCFC members are welcome to attend this session.

8:45 a.m.-9:45 a.m.

PLENARY

Lansing Center | Banquet Rooms 1-8

Legislative Panel - Sen. Aric Nesbitt, Sen. Jeremy Moss, Rep. Graham Filler, Rep. John Fitzgerald

Moderator: *Kyle Melinn, MIRS News Service*

Key lawmakers involved in policy development covering local governments will discuss their agendas for 2024. Moderator Kyle Melinn of MIRS News Service will pose questions to:

- Senate Minority Leader Aric Nesbitt, R-Cass
- Sen. Jeremy Moss, D-Oakland
- Rep. John Fitzgerald, D-Kent
- Rep. Graham Filler, R-Clinton

9:45 a.m.-10:45 a.m.

MAC SESSION #10: BUILDING A RISK MANAGEMENT PLAN

John O'Connor and Sarah Kline | Acrisure

PREMIER PARTNER SESSION - ACRISURE

Lansing Center | Rooms 101/102

During this session, you will learn the necessary skills and approaches needed to develop the long-term success of your risk management program, taking care of your people, your property, and the public. Analyzing crucial data and insights, conducting risk assessments, and identifying trends, gives you the foundation for formulating and executing a tailored plan for effective risk management.

9:45 a.m.-10:45 a.m.

MAC SESSION #11: HOW TO TALK ABOUT MICHIGAN STATE-LEVEL TRANSPORTATION FUNDING WITH FRIENDS (AND ENEMIES)

Ron Davis | HNTB - PM/CM Group

Lansing Center | Rooms 103/104

This presentation will include an overview of how transportation is currently funded at the state level, the needs and challenges related to transportation funding in Michigan and some specific new funding ideas for Michigan from other states. As the title implies, the presentation focus will be practical so that attendees can gain more confidence in speaking about transportation funding with their industry peers and among friends and family in their communities.

We're building a path to a better future.



We've set new environmental and social goals, and we're serious about achieving them.

We've always been a forward-thinking company, focusing on the changes we can make today so tomorrow is better for everyone. That's why we're committing to **net-zero emissions by 2050**.

A brighter future also means building a workplace where everyone is included. We're elevating our diversity efforts, with a focus on **increasing representation of women, Black and Indigenous people and other groups** throughout our organization.

How are we holding ourselves accountable? By **tying our compensation directly to our progress on these goals**.

Our commitment extends to the work we're doing to protect the environment here in Michigan, by replacing the Line 5 pipelines in the Straits of Mackinac inside a new tunnel, buried deep below the lakebed.

We are Enbridge – North America's largest energy infrastructure company – and we believe when the energy you invest in life meets the energy we deliver, a brighter future happens.

Learn more at [Enbridge.com/ESGgoals](https://enbridge.com/ESGgoals).

► Conference Chronology

9:45 a.m.-10:45 a.m.

MAC SESSION #12: OPIOID SETTLEMENTS: LESSONS LEARNED AND NEXT STEPS

Amy Dolinky | Michigan Association of Counties

Lansing Center | Room 201

This session is intended to help counties understand what activities have taken place across the state related to planning and spending associated with opioid settlements. Participants will learn about common themes, practices, and barriers. It also will include a walkthrough of MAC’s voluntary annual opioid settlement reporting survey that is intended to better understand the work taking place across the state with planning and spending efforts.

9:45 a.m.-10:45 a.m.

MCMCFC SESSION #6: DOCUMENTATION DO’S AND DEFINITELY DO NOT’S!

Jeff Segal | Warner Norcross + Judd LLP

Lansing Center | Rooms 203/204

The best practices for documenting treatment in medical record - understanding the reasons for the “DO’s and DO NOT’S” and implementing practical advice into everyday workflow while documenting resident care

10:45 a.m.-11 a.m.

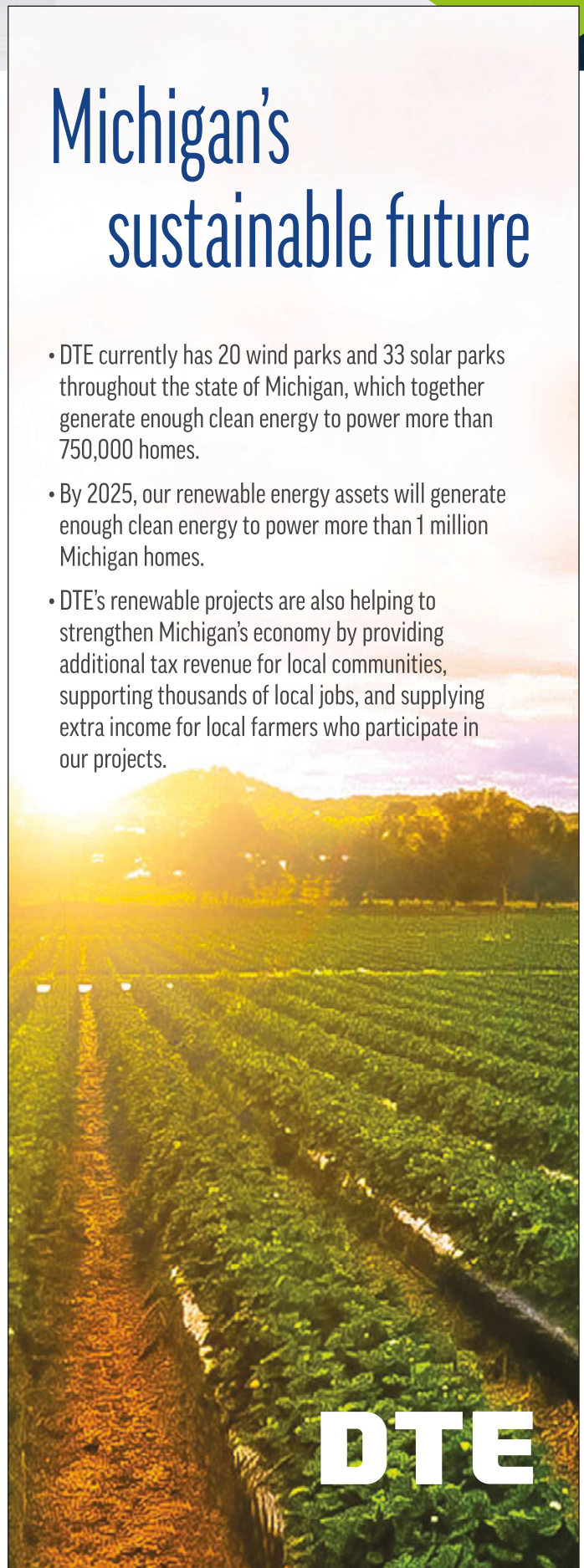
BOXED LUNCH PICK-UP

Lansing Center | Concourse



Michigan's sustainable future

- DTE currently has 20 wind parks and 33 solar parks throughout the state of Michigan, which together generate enough clean energy to power more than 750,000 homes.
- By 2025, our renewable energy assets will generate enough clean energy to power more than 1 million Michigan homes.
- DTE’s renewable projects are also helping to strengthen Michigan’s economy by providing additional tax revenue for local communities, supporting thousands of local jobs, and supplying extra income for local farmers who participate in our projects.



EMPOWERING THE PUBLIC SECTOR

We are the momentum behind what's possible. We focus on the operations of your organization – allowing you to focus on your community. Contact a Rehmann Advisor today and put our experience to work for you. Visit rehmann.com or call 866.799.9580.



Audit & Financial Reporting \ Federal & State Compliance \ Organizational Development
& Operations Consulting \ Pension and Retirement Plan Services \ Comprehensive
Technology Solutions \ Accounting & Human Resource Solutions

Rehmann

► Thank you to our sponsors

HURON SPONSORS



ONTARIO SPONSORS



ERIE SPONSORS



ST. CLAIR SPONSOR





RECRUIT



RETAIN



RETIRE

A comprehensive retirement package can help you do all three



Let us show you how
www.mersofmich.com/WhyMERS



Visit **123NET's** Booth to Explore Opportunities for Bringing

HIGH-SPEED FIBER TO THE HOME

Services to Your County Residents Through the **BEAD** Program!



**HOME FIBER
INTERNET**

► Exhibitors

123.NET

123.net

123.Net, Inc. is Michigan's fiber internet service provider. The company is privately held and headquartered in Southfield. The company delivers high-quality fiber internet, colocation and business voice services to Michigan businesses, residents and counties.



Abilita
(MAC Executive Partner)
abilita.com

Abilita has worked with more than 25 percent of Michigan counties and is endorsed by MAC to help alleviate telecom frustrations. Whether it is an audit to reduce costs, get inventory of services or help with your phone system upgrade we can help! Our consultants have decades of experience and are known as the Experts. Contact us to learn how we can help your county!

Abonmarche Byce / Securitecture

abonmarche.com / securitecture.com

Byce & Associates, Inc. and Securitecture offer consulting engineer and architectural services including civil, structural, mechanical, electrical, architectural, interior design, master planning, justice planning, security consulting, and building commissioning. Let us show you how we put our experienced team to work for building and planning solutions.

ACD.net

[ACD.net](http://acd.net)

Advanced Communication & Data, your Michigan-based communication service provider, delivers the best in fiber, broadband, telephone, and more, all built on our own network for superior reliability and speed. We're passionate about communication technologies and constantly improve our systems and infrastructure to keep you connected.



Acrisure
(MAC Premier Partner)
acrisure.com/greatlakes

Serving organizations statewide, Acrisure specializes in group employee health benefits and is one of the state's only dually licensed third party administrators and brokers providing 24/7 service to all of our clients. Acrisure strives to improve lives while challenging the status quo to reduce the cost of health care.



Blue Cross Blue Shield of Michigan

(MAC Premier Partner)
bcbsm.com

Blue Cross Blue Shield of Michigan is an independent licensee of the Blue Cross and Blue Shield Association. We're the largest health insurer in Michigan, serving 4.5 million people here and 1.6 million more in other states. And we have the largest network of doctors and hospitals in Michigan: 152 hospitals and more than 33,000 doctors. We commit to being our members' trusted partner by providing affordable, innovative products that improve their care and health.

Brown & Brown of Central Michigan

bbrown.com

Brown & Brown Insurance Services, Inc. was founded in 1939 and is ranked today as the 5th largest independent insurance brokerage firm in the US and 6th internationally. The Central Michigan location has become known as the leading employee benefits expert for public sectors today. The experience and knowledge we have developed over the years has given us a unique ability to construct benefit solutions tailored to meet the distinctive needs of each customer.

Citizens for Local Choice

mrgmi.com

Citizens for Local Choice is a broad coalition of bipartisan voters across Michigan, working together as one group to restore local control of zoning regulations through a ballot initiative. In November 2023, the Michigan Legislature passed legislation that strips away local control of wind and solar operations and gives the power to unelected bureaucrats in the Public Service Commission. This new law forces local communities to go through the state when it comes to the zoning authority of utility-scale wind and solar projects. Visit our booth to sign and become part of the effort to secure signatures and restore local voices.

Clark Construction Company

www.clarkcc.com

For over six decades, Clark Construction has been at the forefront of successful planning and construction of government projects. We understand the unique challenges faced by public entities, including the need to build high-quality facilities at a reasonable cost, gaining support from constituents, and effectively communicating with elected officials and the public.

Consumers Energy

consumersenergy.com

We're one of the nation's largest combination electric and natural gas companies. Our goal is making Michigan's energy future even brighter.



Bendzinski & Co.

MUNICIPAL FINANCE ADVISORS

A MICHIGAN FIRM, WORKING FOR MICHIGAN.

Registered Municipal Advisor with the Security and Exchange Commission (the “SEC”) and the Municipal Securities Rulemaking Board (the “MSRB”) offering professional expertise in the following areas:

- Capital Project Financing
- Continuing Disclosure Services
- Official Statement Preparation
- Rating Agency Preparation
- Delinquent Tax Note Financing

Serving Michigan Counties for over 47 years

Bobby Bendzinski
(313) 961-8222 Ext. 1

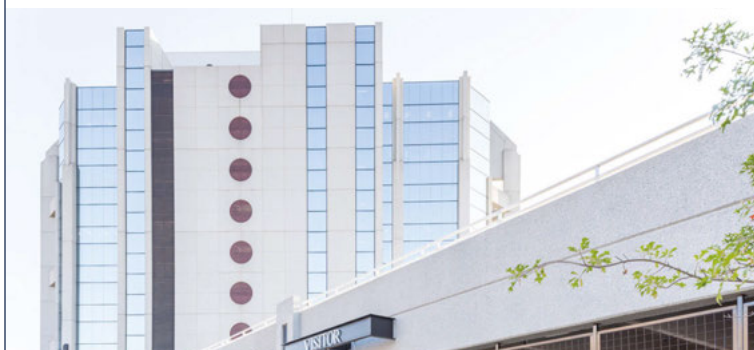
rbendzinski@bendzinski.com

Info@Bendzinski.com (313) 961-8222 www.Bendzinski.com
17000 Kercheval Ave., Suite 230, Grosse Pointe, Michigan 48230

Stephen Hayduk

(313) 961-8222 Ext. 2

shayduk@bendzinski.com



WE BUILD ON A FOUNDATION OF TRUST

LANSING | AUBURN HILLS | ALPENA | GRAND RAPIDS

CONTACT: Chad Thelen • 248.880.0027 • cthelen@clarkcc.com

CLARKCC.COM

► Exhibitors



CoPro+
(MAC Premier Partner)
coproplus.org

CoPro+ is a program that provides public entities with the opportunity to collaboratively procure valuable goods and services at competitive prices. CoPro+ is a time and cost savings program. It offers strong collaboration between the private and public sector, allowing the program to save your organization valuable dollars. The collaborative procurement program provides your organization with assistance in every phase of the procurement process.

Fishbeck

fishbeck.com

Fishbeck is a Michigan-based firm headquartered in Grand Rapids with 14 regional offices. Engineering, environmental sciences, architecture, and construction management are the cornerstones of Fishbeck's services and integrated project approach. Our ability to connect across our numerous in-house disciplines allows us to see the big picture, and because we approach each project from many different perspectives, gives us an unparalleled ability to innovate.



Gallagher

Gallagher
(MAC Premier Partner)
ajg.com

For more than 90 years, Gallagher has provided insurance, risk management and consulting services to businesses, communities and people around the globe, so you can protect what matters most. We live a culture defined by The Gallagher Way, our set of shared values and guiding tenets. A culture driven by our people, over 30,000 strong, serving our clients with customized solutions that will protect them and fuel their futures. Around the globe and across a full spectrum of services.

HPS

hsppo.com

HPS is a member-owned group purchasing organization operating since 1949. Our vision is helping your organization fulfill its mission, goals and financial objectives. We negotiate the best prices possible for essentially every type of product our members would need, from food to cleaning supplies and everything in between. HPS is also your resource for kitchen design and equipment to help you maximize production.

Indivior

indivior.com

Indivior is a global pharmaceutical company working to help change patients' lives by developing medicines to treat substance use disorders (SUD) and serious mental illnesses. Our vision is that all patients around the world will have access to evidence-based treatment for the chronic conditions and co-occurring disorders of SUD.



ITC Michigan
(MAC Associate Partner)
itc-holdings.com

ITC Michigan owns and operates the system of high voltage electric powerlines and substations, commonly referred to as the Greater Grid. Our purpose is to move electricity from where it's generated to where it's needed. With our sole focus on transmission infrastructure, ITC Michigan has unmatched expertise and a commitment to partnering with those involved in transmission projects, including community leaders, local utilities, municipal power providers, and rural electric cooperatives.

Johnson Controls

jci.com

Johnson Controls offers a means to fund and implement facilities improvements for Michigan counties. We use guaranteed energy and operational savings to pay for upgrades, often resulting in no budget increase. Johnson Controls will identify savings and facilities improvement measures. We then provide the funding, engineering, and construction while guaranteeing the project cost and savings. Our work has provided results in lowering costs and improving operations for many Michigan counties.

Karhu Cyber

karhucyber.com

Karhu Cyber delivers comprehensive and customized cybersecurity solutions that reduce risk, improve compliance and protect against cyber threats.

Lean and Green Michigan

leanandgreenmi.com

Lean & Green Michigan helps commercial, industrial, multifamily, nonprofit and agricultural property owners finance energy efficiency, water conservation and renewable energy projects that are profitable for all parties – property owners, contractors and local governments.

MAC Service Corp.

micounties.org/macsc

The Michigan Association of Counties Service Corp. was established in 1986 to provide services to Michigan Association of Counties members through the development and maintenance of a variety of programs and services. Our services are not limited to counties but are available to the various county entities and other agencies within counties.

Seamless All-In-One Solutions



fishbeck.com | info@fishbeck.com



Creating
Sustainable
Communities

Johnson Controls Partners with Local Governments to Achieve and Support Sustainable Communities.

- Infrastructure Upgrades
- Renewable Energy Projects
- Traffic and Street Lighting Improvements
- Automated Water Meters and AMR/AMI Solutions
- Community Relations
- Steps to Achieve Decarbonization Goals
- Water/Wastewater System Efficiency Improvements
- Workforce Development
- MBE/WBE Engagement
- Guaranteed Energy and Operating Costs Savings
- Performance Contracting
- Net Zero Leadership

► Exhibitors

Manquen Vance

manquenvance.com

For nearly 20 years, Manquen Vance has served as specialized experts in municipal employee benefits here in Michigan. Manquen Vance continues to provide strategic benefits administration, plan strategy and account management, and benefit plan financial information exclusively to our local communities. Manquen Vance has been recognized as a premier benefits broker and consultant by a wide variety of municipal clients who value our unmatched knowledge of the local government sector. Manquen Vance's consultants, account managers and financial analysts are dedicated to the specific needs of public sector organizations here in Michigan and are based in Troy.



Michigan Municipal Risk Management Authority

(MAC Associate Partner)

mmrma.org

Michigan Municipal Risk Management Authority (MMRMA) is a public entity self-insurance pool that provides liability and property coverage to municipal governmental entities across Michigan.

Michigan State University Extension

extension.msu.edu

Michigan State University Extension provides research-based education programs designed to address community, family and industry needs in agriculture, natural resources, families, youth and community/economic development and enhance the quality of life for Michigan residents. In addition, MSU Extension provides a number of educational programs that are focused on county government, such as New Commissioner School, and others for broader local government audiences.

Mid Michigan Medical Examiner Group

MedicalExaminerGroup.com

Experience the difference with our comprehensive medical examiner services! With over 25 years of dedicated expertise, we excel in managing every facet of the M.E. Department with compassion and unwavering quality. Our proven track record extends across 13 Michigan counties, where we've seamlessly integrated our infrastructure. When you partner with us, expect nothing short of personalized attention tailored to your county's needs. Ask around and verify our reputation or visit our booth today!

Municipal Employees' Retirement System of Michigan

mersofmich.com

The Municipal Employees Retirement System of Michigan is an independent, professional retirement services company that was created to administer retirement plans for Michigan's local units of government on a not-for-profit basis. Our robust platform of services includes retirement plans, strategies for managing other post-employment benefits (OPEB), investment services, and group life and disability insurance.

NACo

naco.org

The National Association of Counties provides members with a united, non-partisan voice in Washington to drive federal policy that supports county governments and fights unfunded mandates. Membership in NACo also delivers value to county officials and staff through countless networking opportunities, leadership experiences, county-specific research and cost-saving solutions.



Nationwide Retirement Solutions

(MAC Premier Partner)

nrsforu.com

Saving for retirement can be a challenge in a troubled economy, and with tax laws continuously changing, you need a provider who will keep you ahead of the curve. MAC's partnership with Nationwide Retirement Solutions and the National Association of Counties provides professional retirement planning offering sound investment strategies, and a commitment to on-site customer service.



Rehmann

(MAC Premier Partner)

rehmann.com

At Rehmann, our professionals leverage years of experience to help you provide the best value to your communities with the resources you have. We are the trusted advisor team for government entities, K-12 education, higher education and not-for-profit entities. Whether you provide education services, medical services, services to members, or general services to your community, we help you meet the challenges of an evolving landscape.

Smart Offices, Smart Homes

smartofficesandsmarthomes.com

Smart Homes Smart Offices has been awarded a contract with the state of Michigan. We are pleased to provide audio visual equipment, installation, setup, testing, maintenance and staff training of conference and training rooms across numerous state government offices. We strive to be Mid-Michigan's preferred technology provider, and are proud to support the AV and conferencing needs of the State.



CONSTRUCTION MANAGEMENT

Building success stories
one project at a time.

8120 Moorsbridge Rd. Suite 101 / Portage, Michigan 49024
WWW.SKILLMAN.COM / 269.350.5757

+900

COMPLETED
PROJECTS

52

YEARS OF
EXPERIENCE

Mid Michigan Medical Examiner Group Complete Medical Examiner Services



Dr. Paul A. Wagner • Lisa M. Kaspriak
www.medicalexaminergroup.com
main@mmmeg.org
231.510.6205

► Exhibitors

The Skillman Corporation

skillman.com

The Skillman Corporation, founded in 1972, is a construction management firm that prides itself on building relationships, not just buildings. Our employee-owners work side-by-side with our clients to develop plans so their projects run efficiently and effectively. With Skillman, you get an unbiased viewpoint to help you choose the right plans and solutions for your building project. We have worked with clients in the higher education, K-12, municipal and health care markets for over 50 years.

TowerPinkster

towerpinkster.com

TowerPinkster is an award-winning multi-discipline architecture, engineering, and interior design firm full of creative professionals committed to collaboration, quality and integrity.

Weather Shield Roofing Systems

weathershieldusa.com

Since 1980, Weather Shield Roofing Systems has been West Michigan's leading commercial roofing specialist. We work with business owners, property managers, and facility managers who want to minimize their roofing costs, eliminate unpleasant surprises and interruptions, and gain control over their expenditures. Our focus is on maximizing the life of your business' roof. From leak repair to complete re-roofing, we'll take care of your roof as if it were our own.



Your county's membership with Michigan Association of Counties enables you to take advantage of the following programs and services to save you money.

OUR PARTNERS INCLUDE:

- Workers' Compensation Insurance
- Deferred Compensation Plans
- Life Insurance & Disability Benefits
- Grant Services
- Employee Benefits Programs
- Health Insurance Administration
- COBRA Administration and Billing
- Procurement Services
- Telecommunication Services and Bill Analysis

Give us a call today at 800-336-2018 or visit www.micounties.org to find out more!



**Blue Cross
Blue Shield
Blue Care Network**
of Michigan



110 W. Michigan Ave., Suite 200, Lansing, MI 48933
Phone: 800-336-2018 | Fax: 517-482-8244 | www.micounties.org

Save THE DATE!

Sept. 24-26, 2024

(Note Special Run of Tuesday-Thursday this Year)

MICHIGAN COUNTIES ANNUAL CONFERENCE

Grand Traverse Resort • Acme, Michigan

Expect registration to open by early August

For the latest information on the event,
check micounties.org/conferences



► MAC Board of Directors



PRESIDENT
Jim Storey
Allegan County/Region III



FIRST VICE PRESIDENT
Melissa Daub
Wayne County/At-large



SECOND VICE PRESIDENT
Antoinette Wallace
Macomb County/Region V



IMMEDIATE PAST PRESIDENT
Stan Ponstein
Kent County/At-large



Vaughn Begick
Bay County/Region VI



Joe Bonovetz
Gogebic County/Region I



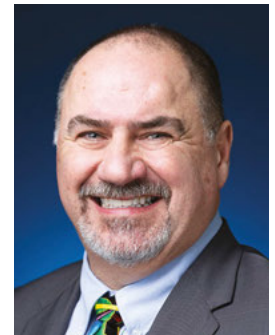
Bryan Kolk
Newaygo County/Region II



Sarah Lucido
Macomb County/Region V



William Miller
Oakland County/At-large



Ken Mitchell
Clinton County/Region IV



Donald "Jay" O'Farrell
Iosco County/Region VI



Joseph Palamara
Wayne County appointee



Richard Schmidt
Manistee County/Region II



Rick Shaffer
St. Joseph County/Region III



Joe Stevens
Dickinson County/Region I



Dwight Washington
Clinton County/Region IV

MAC STAFF

Stephan Currie, Executive Director
Deena Bosworth, Director of Governmental Affairs
Tammi Connell, Director of Member Events
Amanda Despina, Governmental Affairs Assistant
Amy Dolinky, Technical Adviser, Opioid Settlement Funds Planning and Capacity Building
Vicki Dozier, Executive Assistant
Madeline Fata, Governmental Affairs Associate

Kristina Garner, Coordinator of Blue Cross and COBRA Services
Samantha Gibson, Governmental Affairs Associate
Derek Melot, Director of Communications and Marketing
Jamie Pemberton, Director of Finance
Gabriel Zawadzki, Director, Grant Services Program

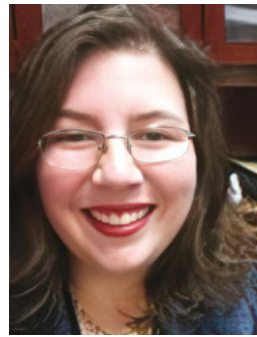
► MCMCFC Board of Directors



PRESIDENT
Shana Espinoza
 Pleasant View



FIRST VICE PRESIDENT
Joe Coleman
 Manistee County



SECOND VICE PRESIDENT
Destiny Wilkins
 Jackson County



SECRETARY
Janice Lamm
 Oakview



TREASURER
Alissa Haynak
 Isabella County



IMMEDIATE PAST PRESIDENT
Marna Robertson
 Meadow Brook



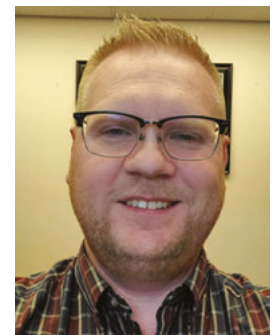
DIRECTOR, DISTRICT I
Denise Perry
 Marquette County



DIRECTOR, DISTRICT II
Lisa Ashley
 Bay Bluffs



DIRECTOR, DISTRICT III
Kimberly Turcott
 Allegan County



DIRECTOR, DISTRICT IV
Shea Baker
 Lapeer County



EXECUTIVE DIRECTOR
Renee Beniak, PhD, RN,
MSN, CNHA, CPHQ

MCMCFC CONTINUING EDUCATION CREDITS

This nursing continuing professional development activity was approved by the Wisconsin Nurses Association, an accredited approver by the American Nurses Credentialing Center's Commission on Accreditation. Approved for a maximum of 8.75 contact hours.

This program has been approved for Continuing Education for 8.75 total participant hours by NAB/NCERS — Approval #20250428-8.75-A101473-IN.

Requirements for successful completion

To receive credit for successful completion of educational sessions, all attendees must:

- Attend one or more sessions
- Sign in for each session
- Complete session evaluation(s)

Attendees will receive their certificate of completion within 30 days of the conclusion of the conference.

No one in control of content has any relevant relationships with ineligible companies (those whose primary business is producing, marketing, selling, reselling or distributing health care products used by or on patients).



Value-driven plans.
More resources.
Better business benefits.

**READY
TO HELP**



At Blue Cross, we know you want the best for your employees. That's why we're ready to help with plans designed to fit any budget, and coverage you can use anywhere, thanks to one of the largest networks of doctors and hospitals in Michigan. From maternity and menopause to mental health and virtual care, we offer whole health coverage and solutions that you and your team can trust.

Attracting better talent starts with having better benefits, and we're ready to help.
bcbsm.com/employers