



MICHIGAN COUNTY  
MEDICAL CARE  
FACILITIES  
COUNCIL

**60** YEARS  
1965-2025

*Our Mission Sets Us Apart  
60 Years, 34 Strong!*



**MICHIGAN  
COUNTIES**

Legislative Conference

**2025**

April 7-9, 2025  
DoubleTree Hotel, Lansing

# AGENDA

## At-A-Glance

### MONDAY | APRIL 7, 2025

TIME	EVENT	ROOM
1PM	Registration Opens for MCMCFC Events	Pre-Function Area (second floor)
2PM-3PM	Purchase of Service Committee Meeting	Michigan III
3PM-5PM	MCMCFC Board Meeting	Michigan III
5:30PM-6:30PM	Strolling Dinner   Premier Partners Vendor Showcase	Capitol Ballroom

### TUESDAY | APRIL 8, 2025

TIME	EVENT	ROOM
7:30AM	Registration Desk Opens	Pre-Function Area (second floor)
7:30AM-8:15AM	Breakfast	Capitol Ballroom
8:30AM-10AM	Workshop: Hot Topics in Long-term Care	Michigan III
10AM-10:15AM	Networking Break	Pre-Function Area (second floor)
10:15AM-11:45AM	Workshop: State Licensing Insights: Comprehensive Overview & Infection Control Challenges	Michigan III
11:45AM-12:45PM	Lunch and MAC County Commissioner Academy Awards	Capitol Ballroom
12:45PM-2:15PM	Workshop: Implicit Bias	Michigan III
2:15PM-2:30PM	Networking Break	Pre-Function Area (second floor)
2:30PM-4PM	Workshop: Legislative Panel	Michigan III
4:30PM-6PM	Networking Reception	Capitol Ballroom
9PM-11PM	MAC President's Hospitality Suite	Room 1128

### WEDNESDAY | APRIL 9, 2025

TIME	EVENT	ROOM
7:30AM	Registration Desk Opens	Pre-Function Area (second floor)
7:30AM-8:30AM	Breakfast and MAC Legislative Awards	Capitol Ballroom
8:30AM-10AM	Workshop: Bureau of Community and Health Systems Updates	Michigan III
10AM-10:15AM	Networking Break	Pre-Function Area (second floor)
10:15AM-11:15AM	Workshop: Life Safety Code Surveys & Citations: Key Insights for Proactive Facility Improvements	Michigan III
11:15AM	Conference Concludes/Hotel Checkout	Lobby

# WELCOME TO THE 2025 Michigan Counties Legislative Conference!



**MCMCFC PRESIDENT**  
**Shana Espinoza**

On behalf of the MCMCFC Board of Directors, I am pleased to welcome you to the 2025 Michigan Counties Legislative Conference. Unity is strength, and we use events like this to gather, share ideas and bring the latest information to our group of 34 county-owned nursing homes.

This year's event will incorporate many valuable educational opportunities, including meeting again with Jennie Belden of the state's Bureau of Survey and Certification.

As a legislative event, one area of focus is advocacy. This year we have convened a panel of HCAM and LeadingAge Michigan government services experts to discuss the current state and national legislative and budget issues of importance to long-term care. It is as important as ever for our members to be ready to engage on legislative priorities and advocacy, schedule meetings and engage with both U.S. and state lawmakers.

We are excited to have you with us, whether you are a veteran attendee or a first-timer at the Legislative Conference. We do remarkable things together!

**Shana Espinoza**

MCMCFC Board President and Administrator,  
Pleasant View Medical Care Facility (Shiawassee County)

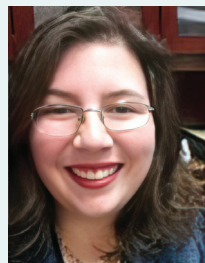
## MCMCFC Board



**PRESIDENT**  
**Shana Espinoza**  
Pleasant View



**FIRST VICE PRESIDENT**  
**Joe Coleman**  
Manistee County



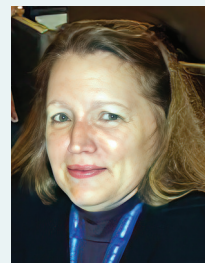
**SECOND VICE PRESIDENT**  
**Destiny Wilkins**  
Jackson County



**SECRETARY**  
**Janice Lamm**  
Oakview



**TREASURER**  
**Alissa Haynak**  
Isabella County



**IMMEDIATE PAST PRESIDENT**  
**Marna Robertson**  
Meadow Brook



**DIRECTOR, DISTRICT I**  
**Denise Perry**  
Marquette County



**DIRECTOR, DISTRICT II**  
**Lisa Ashley**  
Bay Bluffs



**DIRECTOR, DISTRICT III**  
**Kimberly Turcott**  
Allegan County



**DIRECTOR, DISTRICT IV**  
**Shea Baker**  
Lapeer County



**EXECUTIVE DIRECTOR**  
**Renee Beniak, PhD, RN, MSN, CNHA, CPHQ**



# Workshops

All MCMCFC workshop sessions will be held in Michigan III on the second floor of the DoubleTree Hotel. Meals and special events will be in the Capitol Ballroom and/or the Pre-Function Area on the second floor of the hotel. For any questions, visit the Conference Registration Desk.

## Hot Topics in Long Term Care

**Tuesday, April 8, 8:30am-10am**

This session only addresses changes to the survey process, new Critical Element Pathways and your experiences. Learn how to reinforce your storm shelter and be prepared for the winds from the regulatory sector.

**Speaker:** Vickie Bulew, RN, NHA, Health Care Consultant & Educator, L&R Consulting / Lebenbom & Rothman, P.C.

## State Licensing Consultative Section: Challenges in Infection Prevention & Control Programs

**Tuesday, April 8, 10:15am-11:45am**

The evolution of State Licensing Consultative Section (SLCS), topics and support of Michigan’s skilled nursing facilities. Then the session will focus in on infection prevention and control and the challenges facilities and their teams face in a climate of emerging infections and diseases.

**Speakers:** Jacklyn Hutchinson, RN, BSN, Health Care Surveyor, Bureau of Community and Health Systems

Andrew Schefke, RN, BSN, Health Care Surveyor, Bureau of Community and Health Systems

## Implicit Bias in the Real World: Challenges & Solutions

**Tuesday, April 8, 12:45pm-2:15pm**

Dr. Renee Beniak will be joined by a panel of licensed nursing home administrators who will discuss real-world skilled nursing facility implicit bias challenges related to staff, residents, and families. This will be an interactive session designed to provoke audience participation and lively discussion.

**Speakers:**

Lisa Ashley, MSW, LNHA, Administrator, Bay Bluffs County Medical Care Facility

Destiny Wilkins, NHA, Jackson County Medical Care Facility

Kevin Evans, NHA, CEA, Executive Director, Martha T. Berry Medical Care Facility

Stephanie Cornish, Administrator, Calhoun County Medical Care Facility

## Legislative Panel

**Tuesday, April 8, 2:30pm-4pm**

This session will cover the present and future legislative outlook — both in Michigan and nationally — and the impact on long-term care.

**Speakers:**

Richie Farran, Vice President of Government Services, Health Care Association of Michigan

Deanna Mitchell, Vice President for Health Policy and Integrated Systems, LeadingAge Michigan

## Bureau of Survey & Certification Regulatory Updates

**Wednesday, April 9, 8:30am-10am**

The presentation will discuss regulatory changes impacting long-term care providers, current and future education for providers, and CY24 quality metrics for the bureau.

**Speaker:** Jennifer Belden, Director, Bureau of Survey and Certification

## Life Safety Code Surveys & Citations: Key Insights for Proactive Facility Improvements

**Wednesday, April 9, 10:15am-11:15am**

This session provides long-term care facility administrators, managers and staff with an in-depth understanding of the Life Safety Code and how it applies to ensuring safety in healthcare environments.

**Speakers:**

Jeffery Tody, Life Safety Code Inspector, State of Michigan

Randy Davis, Life Safety Code Inspector, State of Michigan

### Details on Continuing Education Credits

This nursing continuing professional development activity was approved by the Wisconsin Nurses Association, an accredited approver by the American Nurses Credentialing Center's Commission on Accreditation for up to 8.5 continuing education participation hours.

This program has been approved for Continuing Education for 8.50 total participant hours by NAB/ NCERS—Approval #20260406-8.50-A109941-IN

**Requirements for Successful Completion**

To receive credit for successful completion of educational sessions, all attendees must:

- Attend one or more sessions
- Sign in for each session
- Complete session evaluation(s)

Attendees will receive their certificate of completion within 30 days of the conclusion of the conference.